

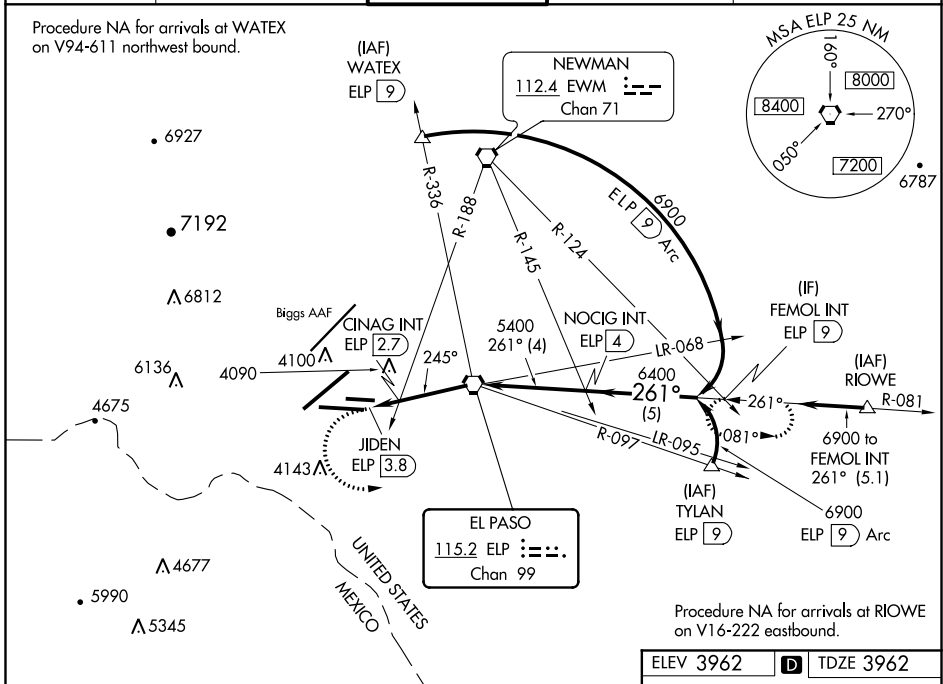
VORTAC ELP 115.2 Chan 99	APP CRS 245°	Rwy Idg TDZE Apt Elev 9025 3962 3962
--	------------------------	--

VOR RWY 26L

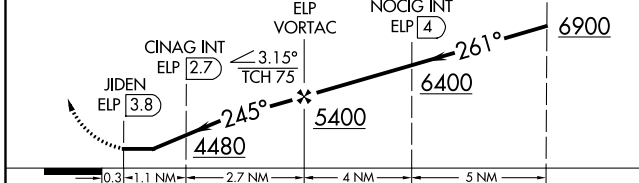
EL PASO INTL (ELP)

ASR Circling NA for Cat D and E west of Rwy 4-22.	MALSR 	MISSED APPROACH: Climb to 4500 then climbing left turn to 7100 on heading 050° and on ELP VORTAC R-081 to FEMOL INT/9 DME and hold.
---	-----------	---

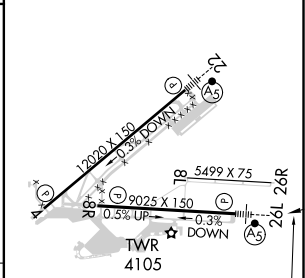
D-ATIS 120.0 254.3	EL PASO APP CON 124.25 298.85	EL PASO TOWER 118.3 239.275	GND CON 121.9 348.6	CLNC DEL 125.0 379.1
------------------------------	---	---------------------------------------	-------------------------------	--------------------------------



4500	7100	ELP R-081	FEMOL INT
		hdg 050°	



ELEV 3962	D	TDZE 3962
-----------	----------	-----------



CATEGORY	A	B	C	D	E
S-26L	4480-1	518 (600-1)	4480-1 $\frac{3}{8}$	518 (600-1 $\frac{3}{8}$)	
C CIRCLING	4480-1	518 (600-1)	4480-1 $\frac{1}{2}$	4680-2	4700-2 $\frac{1}{2}$
CINAG FIX MINIMUMS (DUAL VOR RECEIVERS OR DME REQUIRED)					
S-26L	4340-1 378 (400-1)				
C CIRCLING	4420-1 458 (500-1)	4440-1 478 (500-1)	4460-1 $\frac{1}{2}$ 498 (500-1 $\frac{1}{2}$)	4680-2 $\frac{1}{4}$ 718 (800-2 $\frac{1}{4}$)	4700-2 $\frac{1}{2}$ 738 (800-2 $\frac{1}{2}$)

MRL Rwy 8L-26R	245° 4.1 NM from FAF
REIL Rws 4 and 8R	
HIRL Rws 4-22 and 8R-26L	
FAF to MAP 3.8 NM	
Knots	60 90 120 150 180
Min:Sec	3:48 2:32 1:54 1:31 1:16

SC-3, 19 MAY 2022 to 16 JUN 2022

SC-3, 19 MAY 2022 to 16 JUN 2022