

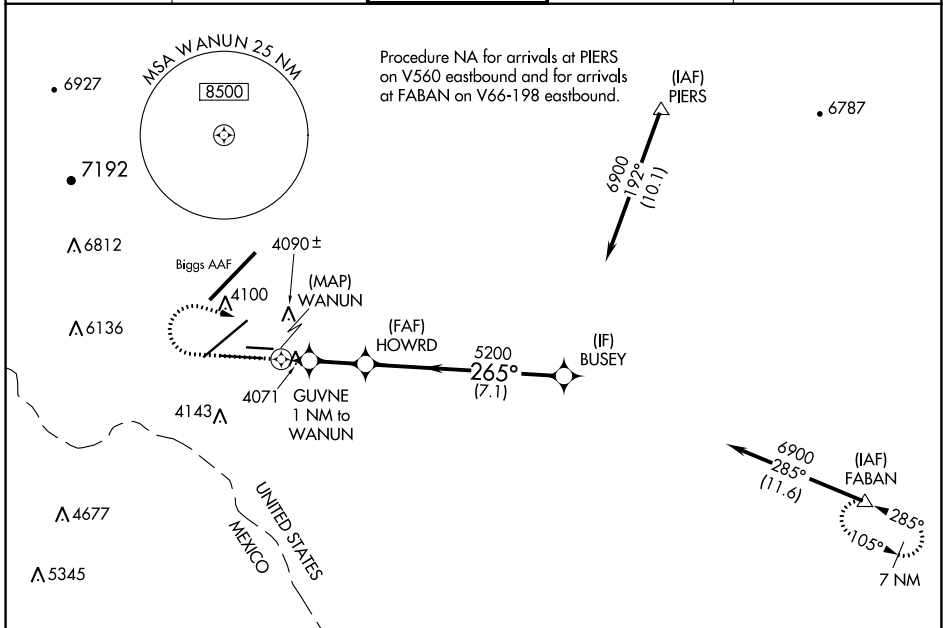
WAAS CH 40223 W26A	APP CRS 265°	Rwy Idg TDZE Apt Elev	9025 3962 3962
--	------------------------	-----------------------------	---

RNAV (GPS) Y RWY 26L

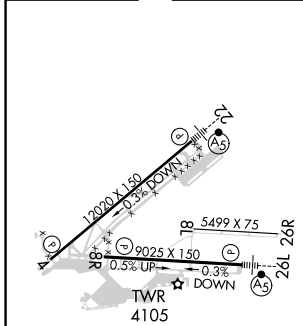
EL PASO INTL (ELP)

RNP APCH	<p>▼ Circling NA for Cat D west of Rwy 4-22. For inop ALS, increase LP and LNAV Cat A/B visibility to 1 SM, and Cat C/D to 1½ SM.</p> <p>▲</p>	MALSR	<p>MISSED APPROACH: Climb to 4380 then climbing right turn to 7500 direct FABAN and hold.</p>
----------	--	-------	---

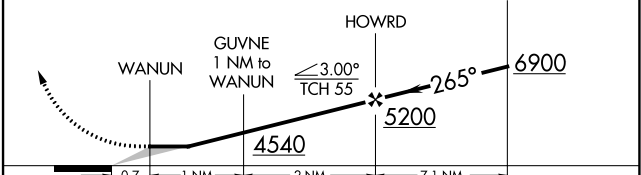
D-ATIS 120.0 254.3	EL PASO APP CON 124.25 298.85	EL PASO TOWER 118.3 239.275	GND CON 121.9 348.6	CLNC DEL 125.0 379.1
------------------------------	---	---------------------------------------	-------------------------------	--------------------------------



ELEV 3962	D	TDZE 3962
-----------	----------	-----------



4380	7500	FABAN	VGSI and descent angles not coincident (VGSI Angle 3.00/TCH 75).
------	------	-------	--



	0.7	1 NM	2 NM	7.1 NM	
CATEGORY	A		B	C	D
LP MDA	4380-¾		418 (500-¾)		
LNAV MDA	4380-¾		418 (500-¾)		
C CIRCLING	4420-1 458 (500-1)	4440-1 478 (500-1)	4460-1½ 498 (500-1½)	4680-2¼ 718 (800-2¼)	

MIRL Rwy 8L-26R
REIL Rwy 4 and 8R
HIRL Rwy 4-22 and 8R-26L

EL PASO, TEXAS
Amdt 1C 26MAR20

31°48'N-106°23'W

RNAV (GPS) Y RWY 26L

SC-3, 19 MAY 2022 to 16 JUN 2022