

APP CRS <b>222°</b>	Rwy Idg TDZE Apt Elev	<b>12020</b> <b>3950</b> <b>3962</b>
------------------------	-----------------------------	--

# RNAV (GPS) Y RWY 22

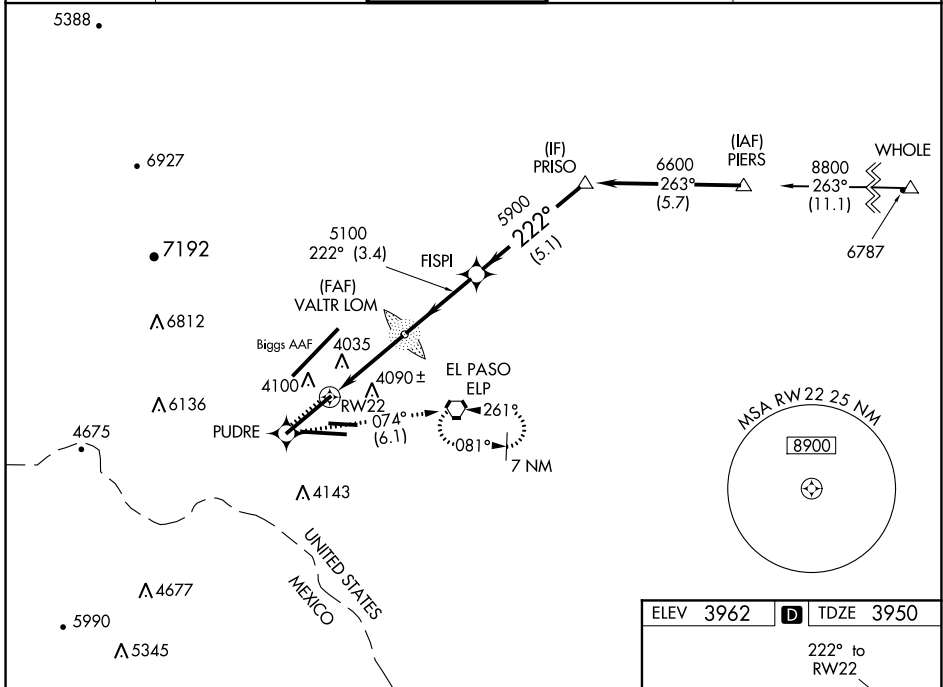
EL PASO INTL (ELP)

RNP APCH.  
 Circling NA for Cat D north of Rwy 26R and northwest of Rwy 4. For uncompensated Baro-VNAV systems, LNAV/VNAV NA below -9°C or above 54°C.  
 For inop ALS increase LNAV/VNAV Cat D visibility to RVR 5000 and LNAV Cat C/D visibility to RVR 5500.

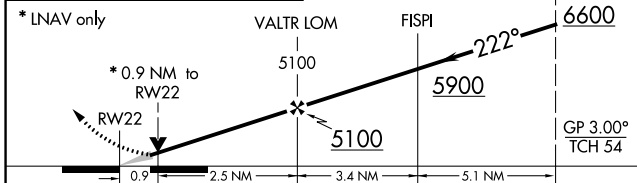


MISSED APPROACH: Climb to 4600 direct PUDRE and climbing left turn to 6900 on track 074° to ELP VORTAC and hold.

D-ATIS <b>120.0 254.3</b>	EL PASO APP CON <b>124.25 298.85</b>	EL PASO TOWER <b>118.3 239.275</b>	GND CON <b>121.9 348.6</b>	CLNC DEL <b>125.0 379.1</b>
------------------------------	---	---------------------------------------	-------------------------------	--------------------------------



4600	PUDRE	6900	ELP	VGSI and RNAV glidepath not coincident (VGSI Angle 3.00/TCH 70).
------	-------	------	-----	--



ELEV 3962	TDZE 3950
-----------	-----------

222° to RW22

4105

4264

4350

4400

4460

4549 X 7.5

0.5% UP

0.3% DOWN

0.5% DOWN

0.3% UP

26L 26R

TWR 4105

MIRL Rwy 8L-26R

REIL Rws 4 and 8R

HIRL Rws 4-22 and 8R-26L

CATEGORY	A	B	C	D
LNAV/VNAV DA	4274/26 324 (400-1/2)			4274/40 324 (400-3/4)
LNAV MDA	4300/24 350 (400-1/2)	4300/30 350 (400-3/8)		4300/50 350 (400-1)
CIRCLING	4420-1 458 (500-1)	4440-1 478 (500-1)	4460-1 1/2 498 (500-1 1/2)	4480-2 1/4 718 (800-2 1/4)

SC-3, 19 MAY 2022 to 16 JUN 2022

SC-3, 19 MAY 2022 to 16 JUN 2022