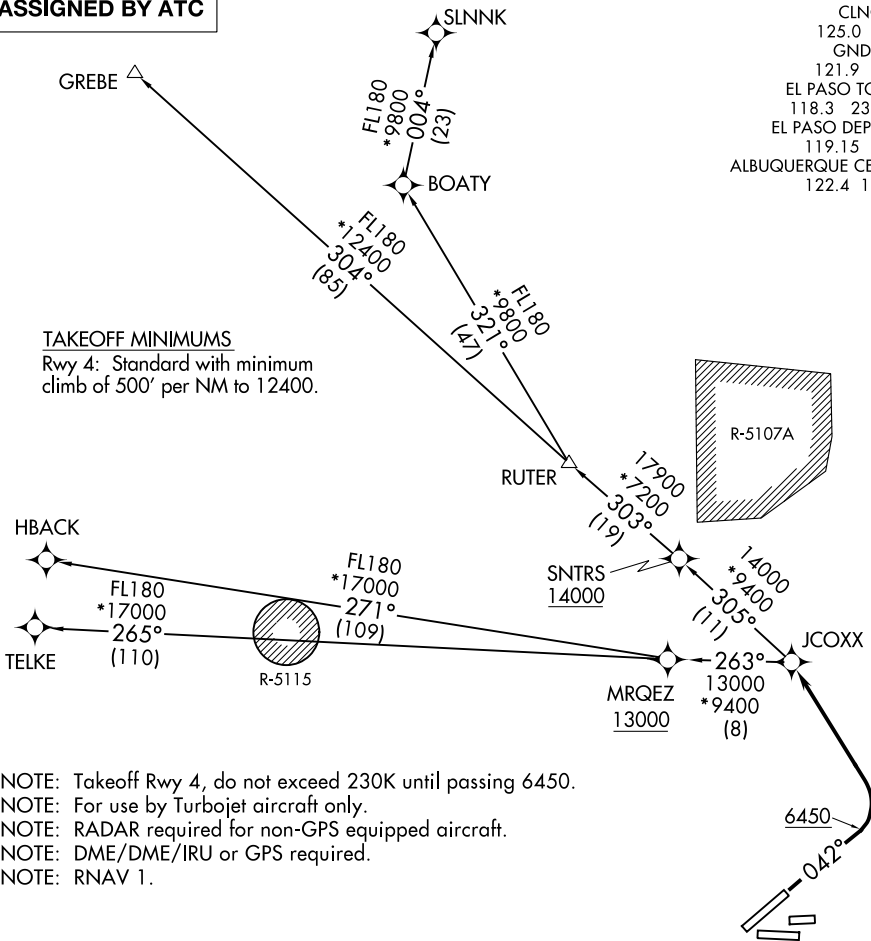


**TOP ALTITUDE:
ASSIGNED BY ATC**

D-ATIS
120.0 254.3
CLNC DEL
125.0 379.1
GND CON
121.9 348.6
EL PASO TOWER
118.3 239.275
EL PASO DEP CON
119.15 263.0
ALBUQUERQUE CENTER
122.4 122.55

TAKEOFF MINIMUMS
Rwy 4: Standard with minimum
climb of 500' per NM to 12400.



- NOTE: Takeoff Rwy 4, do not exceed 230K until passing 6450.
- NOTE: For use by Turbojet aircraft only.
- NOTE: RADAR required for non-GPS equipped aircraft.
- NOTE: DME/DME/IRU or GPS required.
- NOTE: RNAV 1.

NOTE: Chart not to scale.

DEPARTURE ROUTE DESCRIPTION

TAKEOFF RWY 4: Climb heading 042° to 6450, then left turn direct JCOXX, thence. . .
 . . .(transition). Maintain altitude as assigned by ATC, expect filed altitude 10
 minutes after departure.

- GREBE TRANSITION (JCOXX2.GREBE)
- HBACK TRANSITION (JCOXX2.HBACK)
- SLNNK TRANSITION (JCOXX2.SLNNK)
- TELKE TRANSITION (JCOXX2.TELKE)