

APP CRS	Rwy Idg	N/A
117°	TDZE	N/A
	Apt Elev	1763

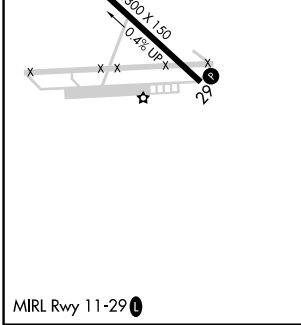
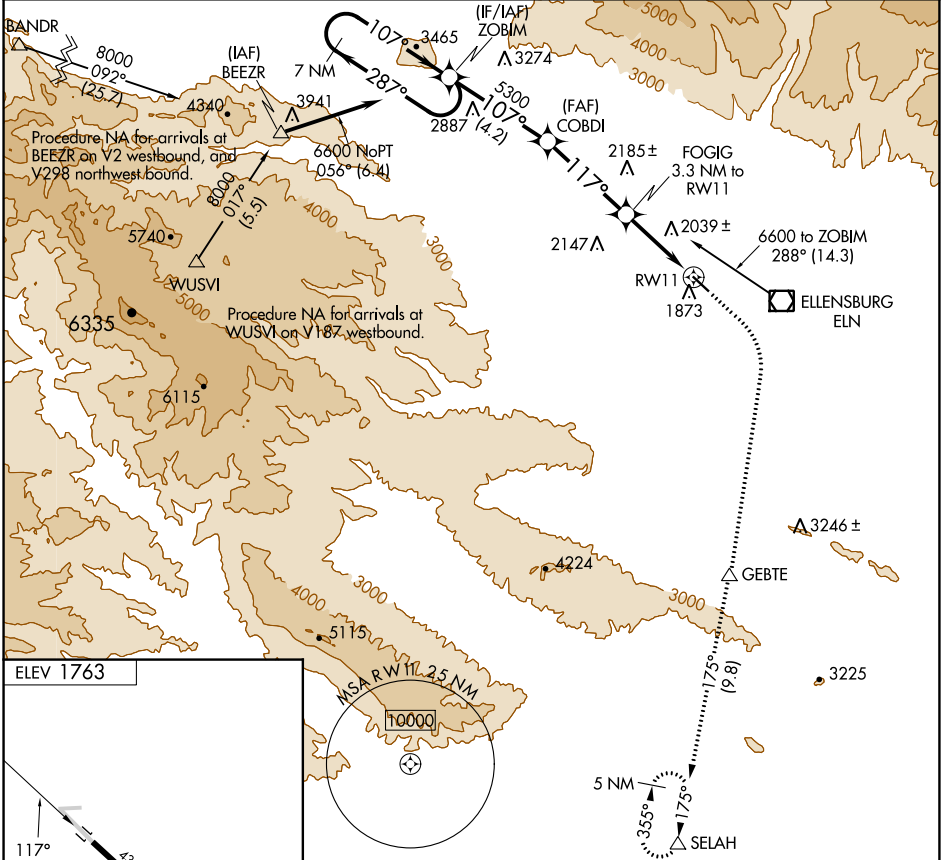
# RNAV (GPS)-C

BOWERS FLD (ELN)

**⚠** DME/DME RNP-0.3 NA. When local altimeter setting not received, use Pangborn Memorial altimeter setting: Increase all MDA 140 feet; increase Cats B/C visibility ¼ SM.

**⚠** MISSED APPROACH: Climb to 2700 then climbing right turn to 5500 direct GEBTE and on track 175° to SELAH and hold.

ASOS <b>118.375</b>	SEATTLE CENTER <b>132.6 269.35</b>	UNICOM <b>123.0 (CTAF) 0</b>
------------------------	---------------------------------------	---------------------------------



7 NM Holding Pattern	ZOBIM	2700	5500	GEBTE	SELAH
		↑	↷	△	△
6600 ← 287°	→ 107°	107°	5300	117°	3880
					5.91° TCH 40
					RW11
					FOGIG 3.3 NM to RW11
					tr 175°
					5 NM
					355°
					175° (9.8)
					SELAH
					WSA R WY 11 2.5 NM
					10000
					4.2 NM
					3.8 NM
					3.3 NM
CATEGORY	A	B	C	D	
CIRCLING	2660-1¼	897 (900-1¼)	2660-2¾ 897 (900-2¾)	2760-3 997 (1000-3)	

NW-1, 31 OCT 2024 to 28 NOV 2024

NW-1, 31 OCT 2024 to 28 NOV 2024