

WAAS CH <b>63207</b> <b>W31A</b>	APP CRS <b>309°</b>	Rwy Idg <b>5506</b> TDZE <b>882</b> Apt Elev <b>887</b>
--	------------------------	---

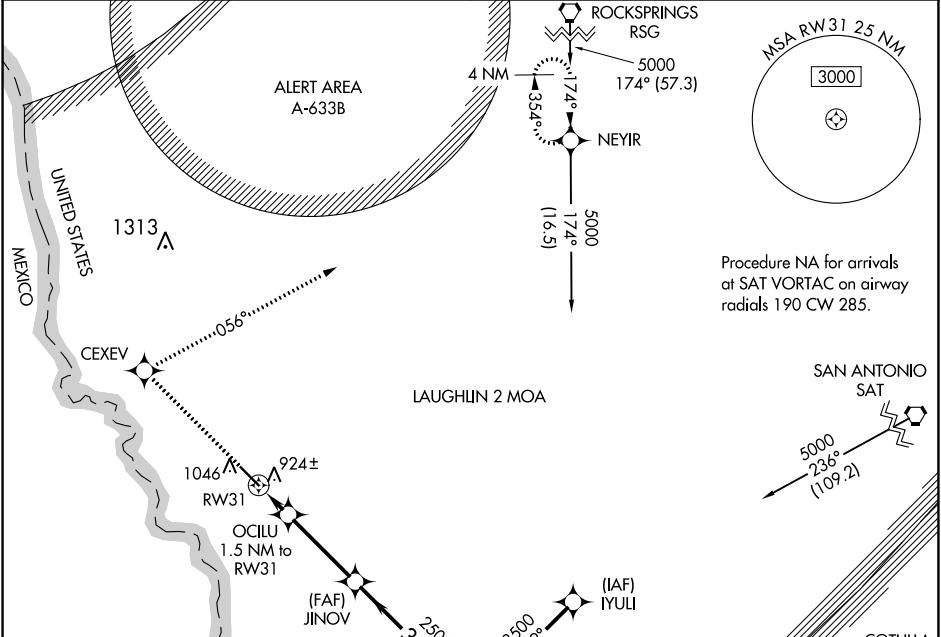
# RNAV (GPS) RWY 31

MAVERICK COUNTY MEML INTL (5T9)

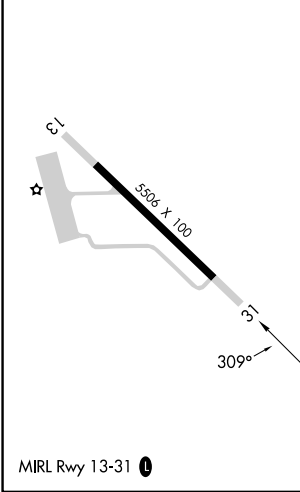
**Baro-VNAV NA.** DME/DME RNP-0.3 NA. Use Laughlin AFB altimeter setting; when not received, use Del Rio Intl altimeter setting.

**MISSED APPROACH:** Climb to 4000 direct CEXEV and via 056° track to NEYIR and hold.

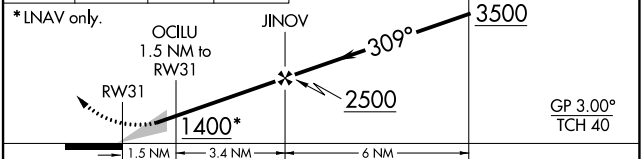
AWOS-3 <b>119.175</b>	KDLF ATIS* <b>114.4 269.9</b>	DEL RIO APP CON * <b>127.75 326.2</b>	UNICOM <b>122.8</b> (CTAF) <b>0</b>
--------------------------	----------------------------------	--	--



ELEV <b>887</b>	TDZE <b>882</b>
-----------------	-----------------



4000	CEXEV	NEYIR	Procedure Turn NA
↑	✦	✦	



CATEGORY	A	B	C	D
LPV DA	1236-1¼	354 (400-1¼)		NA
LNAV/VNAV DA	1298-1½	416 (500-1½)		NA
LNAV MDA	1280-1	398 (400-1)		NA
CIRCLING	1500-1	613 (700-1)	1500-1¾ 613 (700-1¾)	NA

SC-3, 31 OCT 2024 to 28 NOV 2024

SC-3, 31 OCT 2024 to 28 NOV 2024