

WAAS CH 49118 W18A	APP CRS 183°	Rwy Idg TDZE Apt Elev	5000 393 401
--	------------------------	-----------------------------	---

RNAV (GPS) RWY 18

DOTHAN RGNL (DHN)

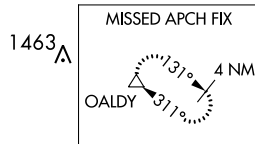
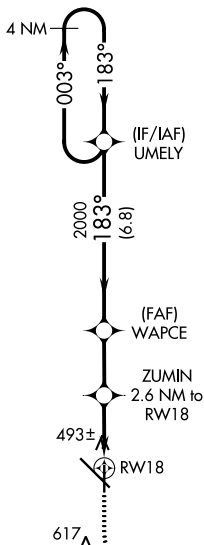
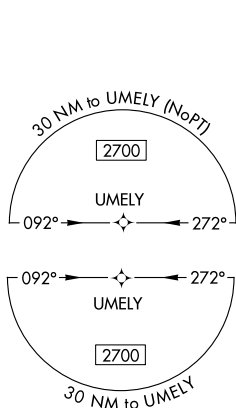
For uncompensated Baro-VNAV systems, LNAV/VNAV NA below -1.5°C (5°F) or above 41°C (105°F). DME/DME RNP-0.3 NA.
Visibility reduction by helicopters NA.

MISSED APPROACH: Climb to 900 then climbing left turn to 3000 direct OALDY and hold.

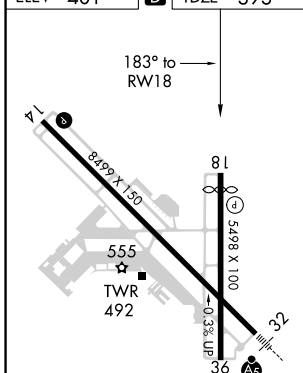
ATIS 135.725	CAIRNS APP CON * 125.4 327.125	DOTHAN TOWER * 118.4 (CTAF) 0 257.6	GND CON 121.7 348.6	UNICOM 122.95
------------------------	--	---	-------------------------------	-------------------------

SE-4, 08 AUG 2024 to 05 SEP 2024

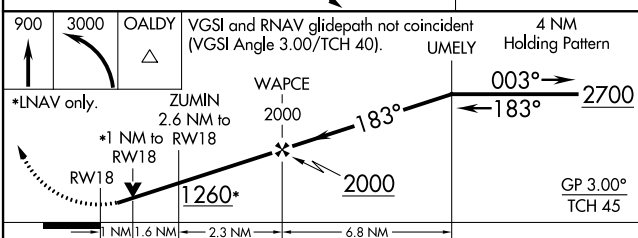
SE-4, 08 AUG 2024 to 05 SEP 2024



ELEV 401	D	TDZE 393
----------	----------	----------



- REIL Rwy 18
- REIL Rwy 14
- HIRL Rwy 18-36
- HIRL Rwy 14-32



CATEGORY	A	B	C	D
LPV DA		643- ³ / ₄	250 (300- ³ / ₄)	
LNAV/VNAV DA		674- ⁷ / ₈	281 (300- ⁷ / ₈)	
LNAV MDA		760-1	367 (400-1)	
C CIRCLING	860-1	459 (500-1)	920-1 ¹ / ₂ 519 (600-1 ¹ / ₂)	1040-2 639 (700-2)