

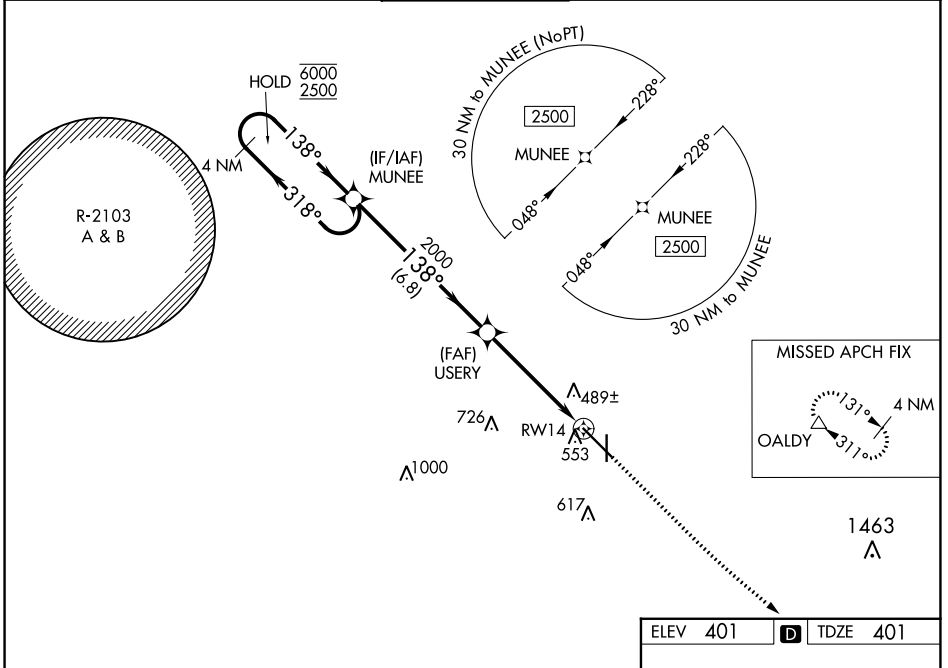
WAAS CH <b>86504</b> <b>W14A</b>	APP CRS <b>138°</b>	Rwy ldg <b>8496</b> TDZE <b>401</b> Apt Elev <b>401</b>
--	------------------------	---

# RNAV (GPS) RWY 14

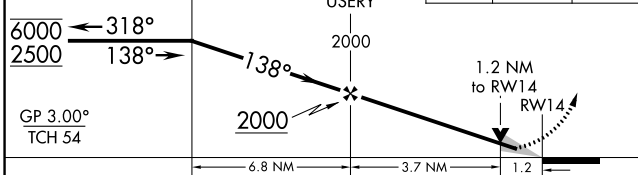
DOTHAN RGNL (DHN)

RNP APCH - GPS.		MISSED APPROACH: Climb to 900 then climbing left turn to 3000 direct OALDY and hold.		
<p>▼ For uncompensated Baro-VNAV systems, LNAV/VNAV NA below -3°C or above 54°C. Intense student helicopter pilot training in vicinity of airport.</p>				

ATIS <b>135.725</b>	CAIRNS APP CON * <b>125.4 327.125</b>	DOTHAN TOWER * <b>118.4 (CTAF) 0 257.6</b>	GND CON <b>121.7 348.6</b>	UNICOM <b>122.95</b>
------------------------	--	---	-------------------------------	-------------------------



4 NM Holding Pattern	VGSI and RNAV glidepath not coincident (VGSI Angle 3.00/TCH 40).	900	3000	OALDY
----------------------	--	-----	------	-------



CATEGORY	A	B	C	D
LPV DA	601-3/4		200 (200-3/4)	
LNAV/VNAV DA	724-1		323 (400-1)	
LNAV MDA	820-1 419 (500-1)		820-1 1/8 419 (500-1 1/8)	
CIRCLING	860-1 459 (500-1)		920-1 1/2 1040-2 639 (700-2)	

ELEV 401	<b>D</b>	TDZE 401
----------	----------	----------

This block contains a detailed diagram of the runway and taxiway layout. It shows RWY 14, RWY 18-36, and taxiways including OALDY, 36, 37, 38, 39, 40, 41, 42, 43, 44, 45, 46, 47, 48, 49, 50, 51, 52, 53, 54, 55, 56, 57, 58, 59, 60, 61, 62, 63, 64, 65, 66, 67, 68, 69, 70, 71, 72, 73, 74, 75, 76, 77, 78, 79, 80, 81, 82, 83, 84, 85, 86, 87, 88, 89, 90, 91, 92, 93, 94, 95, 96, 97, 98, 99, 100. The diagram also shows the tower location (TWR 492) and the runway width (8499' X 150').

SE-4, 11 JUL 2024 to 08 AUG 2024

SE-4, 11 JUL 2024 to 08 AUG 2024