

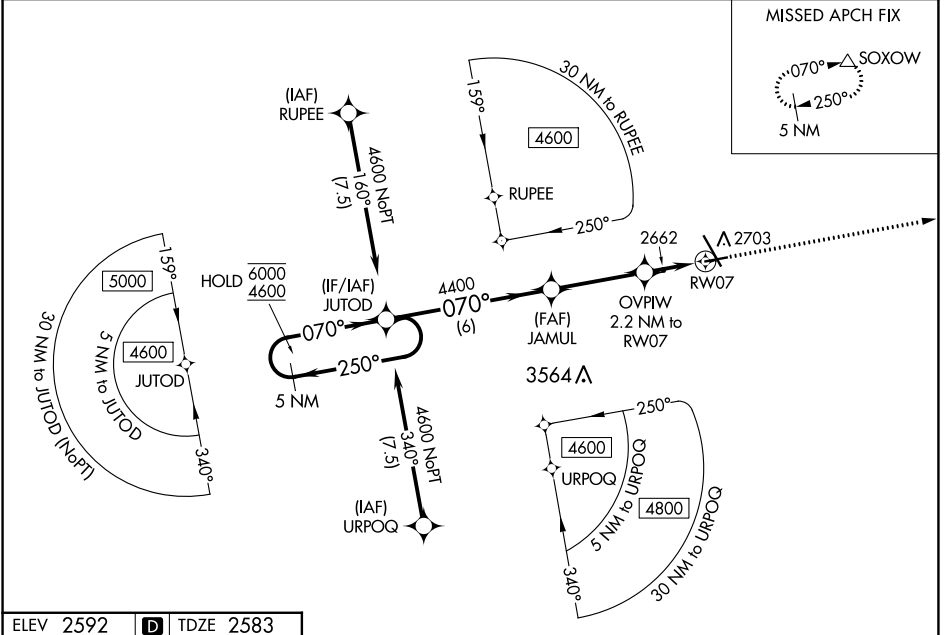
WAAS CH 90544 W07A	APP CRS 070°	Rwy ldg 4700 TDZE 2583 Apt Elev 2592
--	------------------------	---

RNAV (GPS) RWY 7

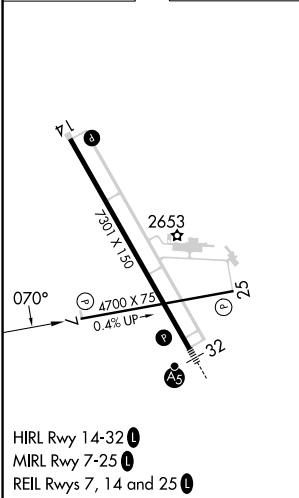
DICKINSON/THEODORE ROOSEVELT RGNL (DIK)

RNP APCH - GPS.	MISSED APPROACH: Climb to 4600 direct SOXOW and hold.
<p>▼ Rwy 7 helicopter visibility reduction below 3/4 SM NA.</p> <p>▲ For uncompensated Baro-VNAV systems, LNAV/VNAV NA below -26°C or above 54°C.</p>	

ASOS 118.375	MINNEAPOLIS CENTER 124.25 236.825	UNICOM 123.0 (CTAF) 0
------------------------	---	---------------------------------



ELEV 2592	D	TDZE 2583
------------------	----------	------------------



5 NM Holding Pattern		JUTOD		JAMUL		OVPW 2.2 NM to RW07		4600	SOXOW
6000 ← 250°		4600 → 070°		4400 → 070°		3320		↑	△
GP 3.00°		TCH 45		4400		3320			
		6 NM		3.4 NM		1.2 NM		1 NM	
CATEGORY	A	B	C	D					
LPV DA	2833-1		250 (300-1)						
LNAV/VNAV DA	2833-1		250 (300-1)						
LNAV MDA	2920-1		337 (400-1)						
CIRCLING	3060-1	468 (500-1)	3120-1½	528 (600-1½)	3200-2	608 (700-2)			

RNAV (GPS) RWY 7

NC-1, 08 AUG 2024 to 05 SEP 2024

NC-1, 08 AUG 2024 to 05 SEP 2024