

WAAS CH 82241 W04D	APP CRS 036°	Rwy Idg 10000 TDZE 645 Apt Elev 645
--	------------------------	--

RNAV (GPS) Z RWY 4L

DETROIT METRO WAYNE COUNTY (DTW)

RNP APCH

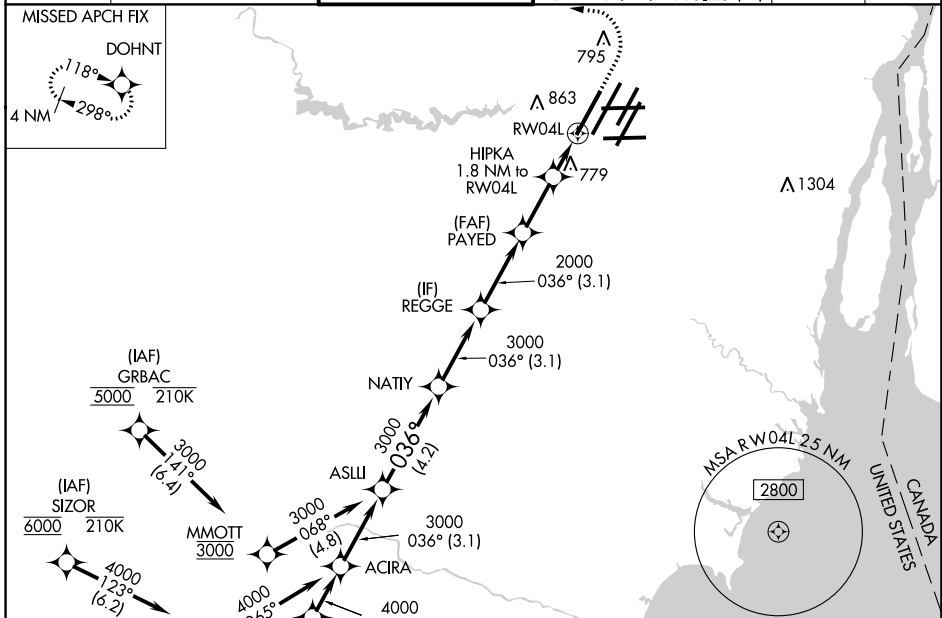
Simultaneous approach authorized. Use of FD or AP required during simultaneous operations. LNAV procedure NA during simultaneous operations. For uncompensated Baro-VNAV systems, LNAV/VNAV NA below -19°C or above 54°C. For inop ALS, increase LNAV/VNAV all Cats visibility to RVR 6000.

ALSF-2



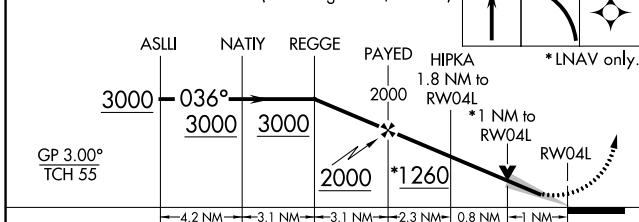
MISSED APPROACH: Climb to 1100 then climbing left turn to 4000 direct DOHNT and hold.

D-ATIS 133.675	DETROIT APP CON 124.05 284.0	METRO TOWER 135.0 317.725	GND CON 121.8 (NW) 119.45 (NE) 132.725 (SW) 119.25 (SE)	CLNC DEL 120.65	CPDLC
--------------------------	--	-------------------------------------	---	---------------------------	-------

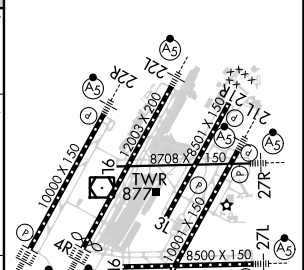


ELEV 645	D TDZE 645
----------	-------------------

VGSI and RNAV glidepath not coincident (VGSI Angle 3.00/TCH 71).



CATEGORY	A	B	C	D
LPV DA		845/18	200 (200-½)	
LNAV/VNAV DA		1046/40	401 (500-¾)	
LNAV MDA	1040/24	395 (400-½)	1040/35	395 (400-⅝)
C CIRCLING	1180-1	535 (600-1)	1180-1½ 535 (600-1½)	1240-2 595 (600-2)



TDZ/CL Rwys 3R, 4L, 4R and 22R
REL Rwys 3L, 9L, 9R and 21R
HIRL all runways

EC-1, 03 OCT 2024 to 31 OCT 2024

EC-1, 03 OCT 2024 to 31 OCT 2024