


APP CRS 216°	Rwy ldg TDZE Apt Elev	10000 642 645
------------------------	-----------------------------	--

RNAV (RNP) X RWY 22R

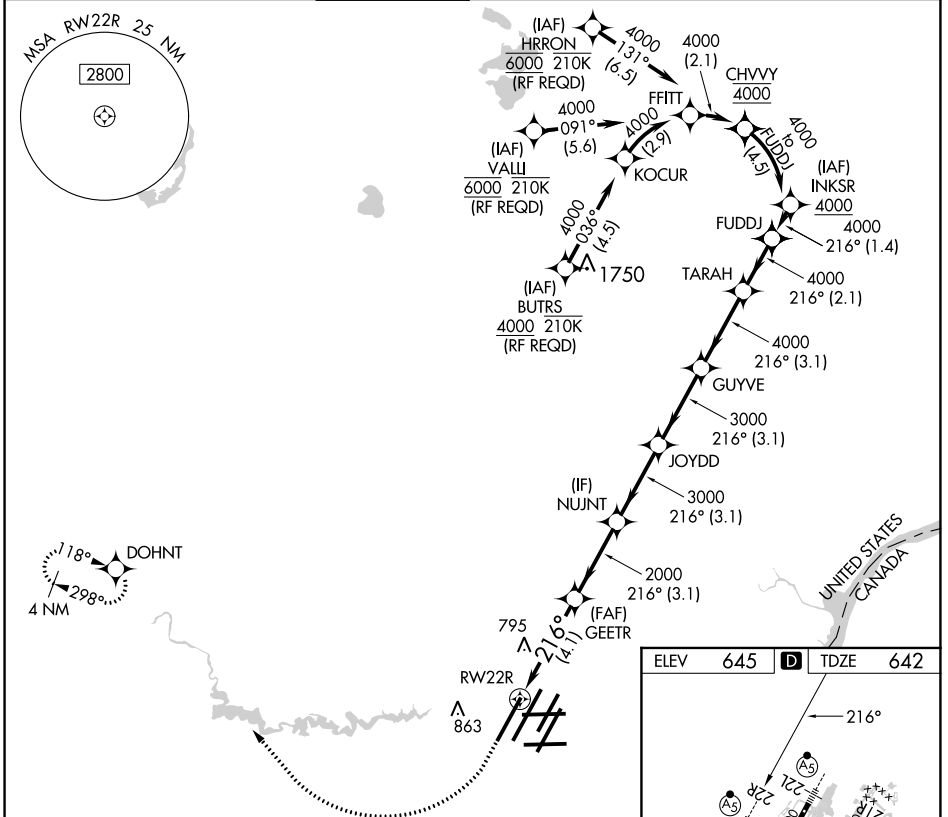
DETROIT METRO WAYNE COUNTY (DTW)



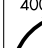

RNP AR APCH. MALSR 

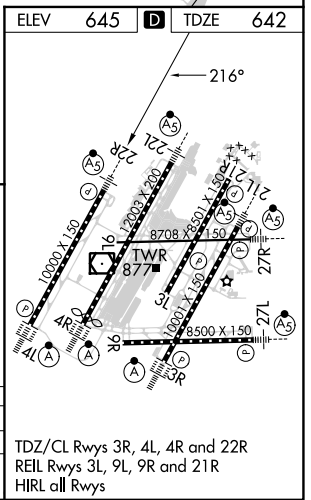
⚠ For uncompensated Baro-VNAV systems, procedure NA below -19°C (-2°F) or above 54°C (130°F). Simultaneous approach authorized. For inop ALS, increase RNP 0.30 all Cats visibility to RVR 5500.

MISSED APPROACH: Climb to 1100 then climbing right turn to 4000 direct DOHNT and hold.

D-ATIS 133.675	DETROIT APP CON 124.05 284.0	METRO TOWER 135.0 317.725	GND CON 121.8 (NW) 119.45 (NE) 132.725 (SW) 119.25 (SE)	CLNC DEL 120.65	CPDLC
--------------------------	--	-------------------------------------	---	---------------------------	-------



1100	4000	DOHNT 	VGSi and RNAV glidepath not coincident (VGSi Angle 3.00/TCH 71).			
			GUYVE	TARAH	FUDDJ	
			GEETR	NUJNT	JOYDD	
			2000	3000	3000	4000
				216°	4000	4000
						GP 3.00°
						TCH 55
			4.1 NM	3.1 NM	3.1 NM	3.1 NM
						2.1 NM
CATEGORY	A	B	C	D		
RNP 0.30 DA	987/30		345 (400-5%)			



AUTHORIZATION REQUIRED

TDZ/CL Rwys 3R, 4L, 4R and 22R
REIL Rwys 3L, 9L, 9R and 21R
HIRL all Rwys

EC-1, 31 OCT 2024 to 28 NOV 2024

EC-1, 31 OCT 2024 to 28 NOV 2024