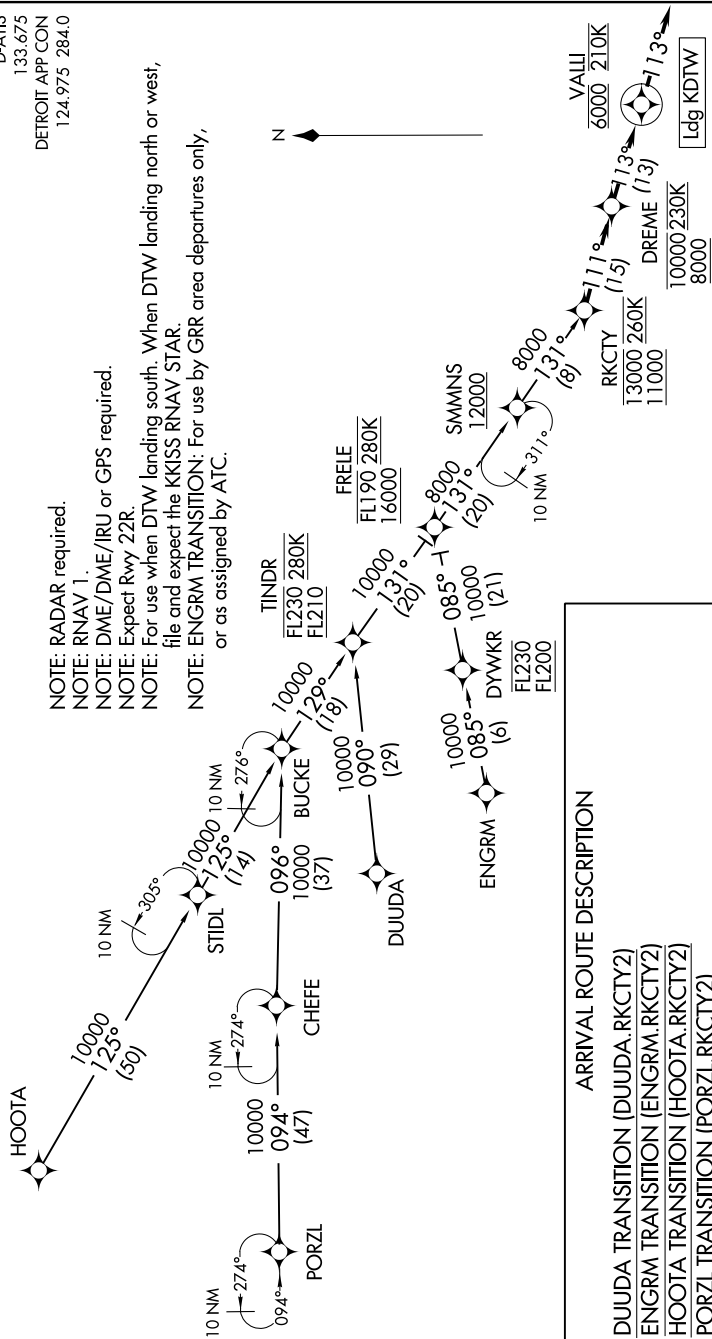


D-AITS
133.675
DETROIT APP CON
124.975 284.0

NOTE: RADAR required.
NOTE: RNAV 1.
NOTE: DME/DME/IRU or GPS required.
NOTE: Expect Rwy 22R.
NOTE: For use when DTW landing south. When DTW landing north or west, file and expect the KXISS RNAV STAR.
NOTE: ENGRM TRANSITION: For use by GRR area departures only, or as assigned by ATC.



Ldg KDTW

NOTE: Chart not to scale.

EC-1, 08 AUG 2024 to 05 SEP 2024

EC-1, 08 AUG 2024 to 05 SEP 2024

ARRIVAL ROUTE DESCRIPTION

- DUUDA TRANSITION (DUUDA.RKCTY2)
- ENGRM TRANSITION (ENGRM.RKCTY2)
- HOOOA TRANSITION (HOOOA.RKCTY2)
- PORZL TRANSITION (PORZL.RKCTY2)

From RKCTY on track 111° to cross DREME between 8000 and 10000 and at 230K, then on track 113° to cross VALLI at 6000 and at 210K, then on track 113°. Expect RADAR vectors to final approach course.

LOST COMMUNICATIONS

From VALLI, execute RNAV (GPS) Y RWY 22R or ILS Y RWY 22R approach.