

(KZLOV2.WINNZ) 24137

KZLOV TWO DEPARTURE (RNAV)

DETROIT METRO WAYNE COUNTY (DTW)
AL-119 (FAA) DETROIT, MICHIGAN

DETROIT DEP CON
132.025 284.0
D-ATIS 118.125
CLINC DEL 120.65
CPDLC

GND CON
121.8 (NW) 119.45 (NE)
132.725 (SW) 119.25 (SE)
METRO TOWER
118.4 317.725 (Rwy 3L/R, 21L/R, 27R)
128.75 317.725 (Rwy 27L)
135.0 317.725 (Rwy 4L/R, 22L/R)

**TOP ALTITUDE:
10000**

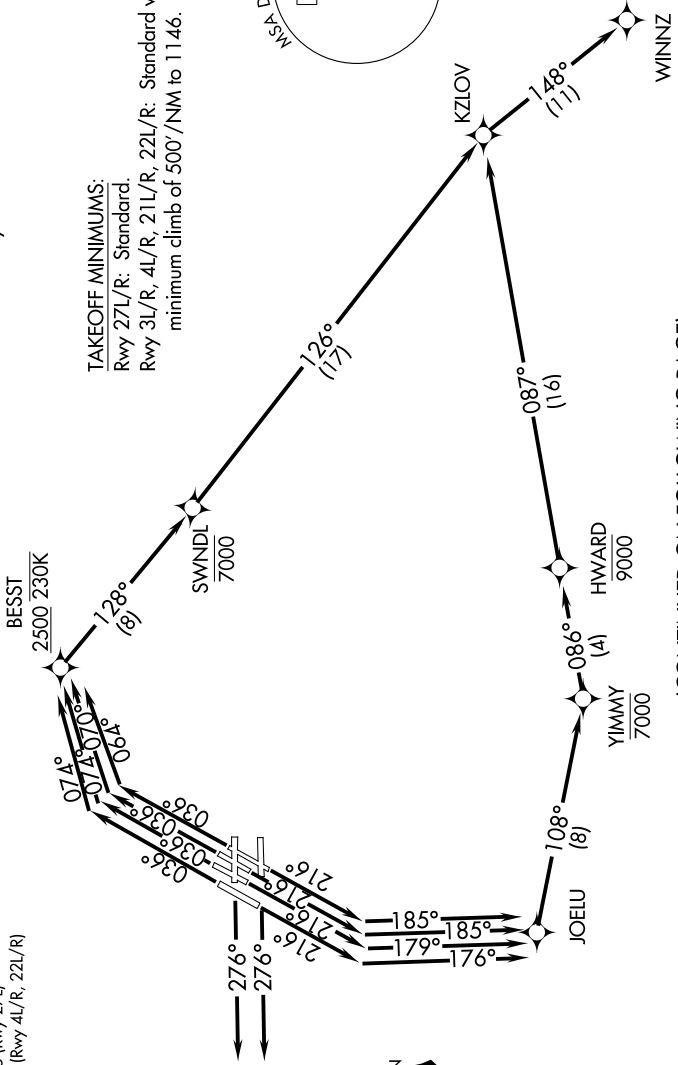
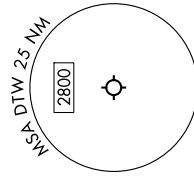
RNAV 1 - DME/DME/IRU or GPS.

RADAR required.

NOTE: Turbojet departures at/above 10000,
maintain 280K until advised by ATC.
NOTE: For use by Cleveland terminal arrivals only.

TAKEOFF MINIMUMS:

Rwy 27L/R: Standard.
Rwy 3L/R, 4L/R, 21L/R, 22L/R: Standard with
minimum climb of 500'/NM to 1146.



(CONTINUED ON FOLLOWING PAGE)

NOTE: Chart not to scale.

EC-1, 08 AUG 2024 to 05 SEP 2024

EC-1, 08 AUG 2024 to 05 SEP 2024

KZLOV TWO DEPARTURE (RNAV)

(KZLOV2.WINNZ) 16MAY24

DETROIT, MICHIGAN
DETROIT METRO WAYNE COUNTY (DTW)