

LOC/DME I-HJT <b>111.95</b> Chan 56(Y)	APP CRS <b>036°</b>	Rwy Idg TDZE Apt Elev <b>10000</b> <b>645</b> <b>645</b>
----------------------------------------------	------------------------	-------------------------------------------------------------------------

# ILS Z RWY 4L (CAT II & III)

DETROIT METRO WAYNE COUNTY (DTW)

From GRBAC, SIZOR: RNAV 1-DME/DME/IRU or GPS required. Aircraft not DME/DME/IRU or GPS equipped - RADAR required for procedure entry. DME or RADAR required.

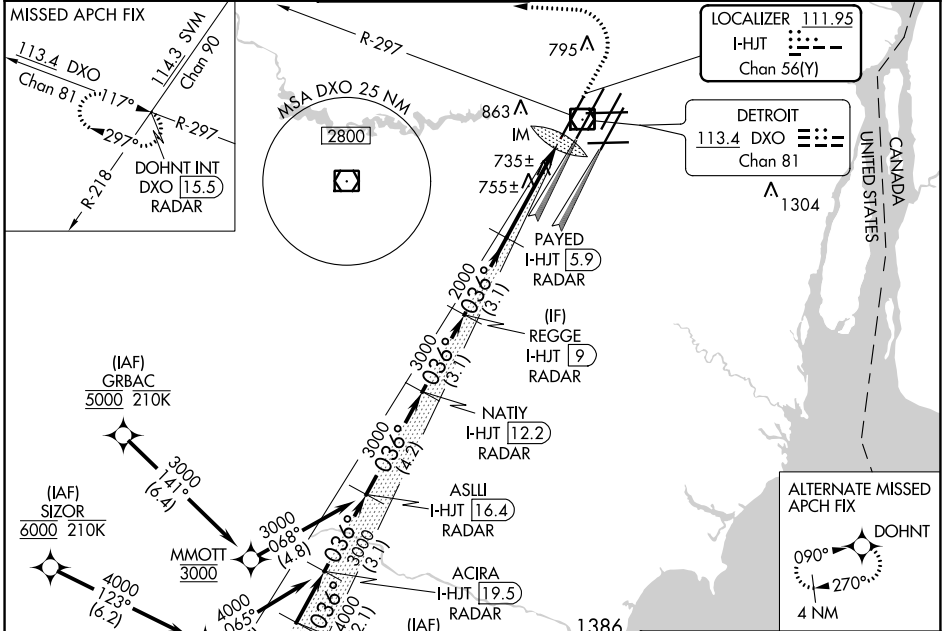
ALSF-2



MISSED APPROACH: Climb to 1100 then climbing left turn to 4000 on DXO VOR/DME R-297 to DOHNT INT/DXO 15.5 DME/RADAR and hold.

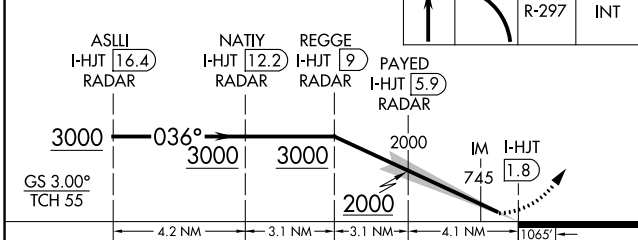
Simultaneous approach authorized. CAT II; RVR 1000 authorized with specific OPSPEC, MSPEC, or LOA approval and use of autoland or HUD to touchdown.

D-ATIS <b>133.675</b>	DETROIT APP CON <b>124.05 284.0</b>	METRO TOWER <b>135.0 317.725</b>	GND CON <b>121.8</b> (NW) <b>132.725</b> (SW)	CON <b>119.45</b> (NE) <b>119.25</b> (SE)	CLNC DEL <b>120.65</b>	CPDLC
--------------------------	----------------------------------------	-------------------------------------	-----------------------------------------------------	-------------------------------------------------	---------------------------	-------

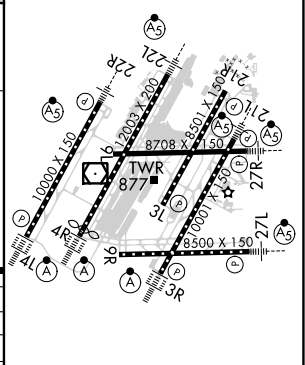


ELEV 645	TDZE 645
----------	----------

VGSI and ILS glidepath not coincident (VGSI Angle 3.00/TCH 71).



CATEGORY	A	B	C	D
S-ILS 4L	CAT II RA 101/12		100 DA 745	
S-ILS 4L	CAT III RVR 600			



TDZ/CL Rwy's 3R, 4L, 4R and 22R  
REIL Rwy's 3L, 9L, 9R and 21R  
HIRL all runways

## CATEGORY II & III ILS - SPECIAL AIRCREW & AIRCRAFT CERTIFICATION REQUIRED

EC-1, 08 AUG 2024 to 05 SEP 2024

EC-1, 08 AUG 2024 to 05 SEP 2024