

ILS PRM Y RWY 22R (CLOSE PARALLEL)

DETROIT METRO WAYNE COUNTY (DTW)

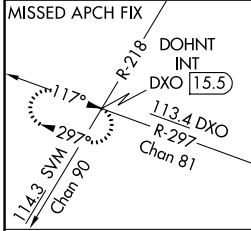
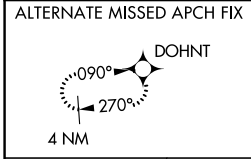
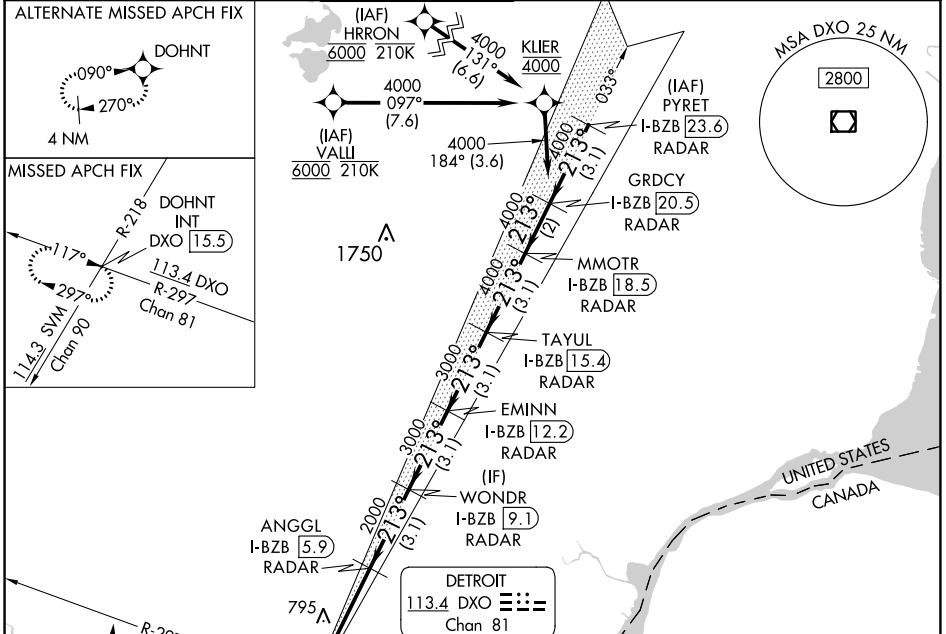
LOC/DME I-BZB 111.75	APP CRS 213°	Rwy Idg TDZE Apt Elev	10000 642 645
Chan 54 (Y)			

RNAV 1-GPS, HRRON and VALLI: RNAV 1-DME/DME/IRU or GPS required.
Aircraft not DME/DME/IRU or GPS equipped - RADAR required for procedure entry.

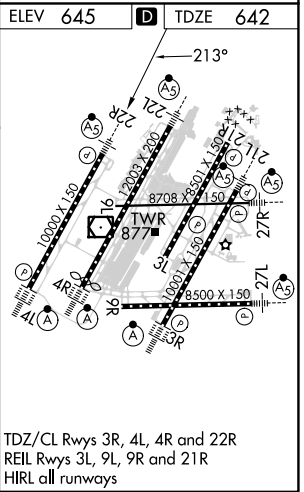
Simultaneous approach authorized.
Procedure NA when glide slope not available (ILS procedures only).
Dual VHF Comm required. See additional requirements on AAUP.

MALS R
MISSED APPROACH: Climb to 1100 then climbing right turn to 4000 on DXO VOR/DME R-297 to DOHNT INT/DXO 15.5 DME and hold.

D-ATIS 133.675	DETROIT APP CON 124.05 284.0	METRO TOWER 135.0 317.275 PRM 127.05	GND CON 121.8 (NW) 119.45 (NE) 132.725 (SW) 119.25 (SE)	CLNC DEL 120.65	CPDLC
--------------------------	--	--	---	---------------------------	-------



1100	4000	DXO R-297	DOHNT INT	VGSI and ILS glidepath not coincident (VGSI Angle 3.00/TCH 71).			
WOND R I-BZB 9.1		EMINN I-BZB 12.2		TAYUL I-BZB 15.4		GRDCY I-BZB 20.5	
ANGGL I-BZB 5.9				MMOTR I-BZB 18.5			
2000		3000		3000		4000	
213°		213°		213°		213°	
4000		4000		4000		4000	
GS 3.00°		TCH 55					
-4.1 NM		-3.1 NM		-3.1 NM		-2 NM	
CATEGORY	A	B	C	D			
S-ILS 22R	892/24		250 (300-1/2)				



ILS PRM Y RWY 22R (CLOSE PARALLEL)

EC-1, 31 OCT 2024 to 28 NOV 2024

EC-1, 31 OCT 2024 to 28 NOV 2024