

ILS PRM RWY 22L (CLOSE PARALLEL)

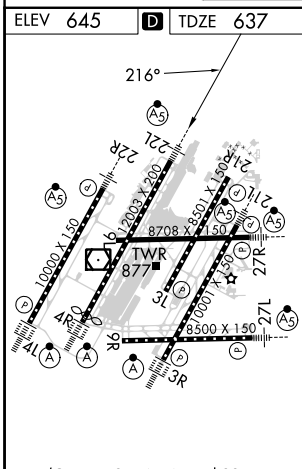
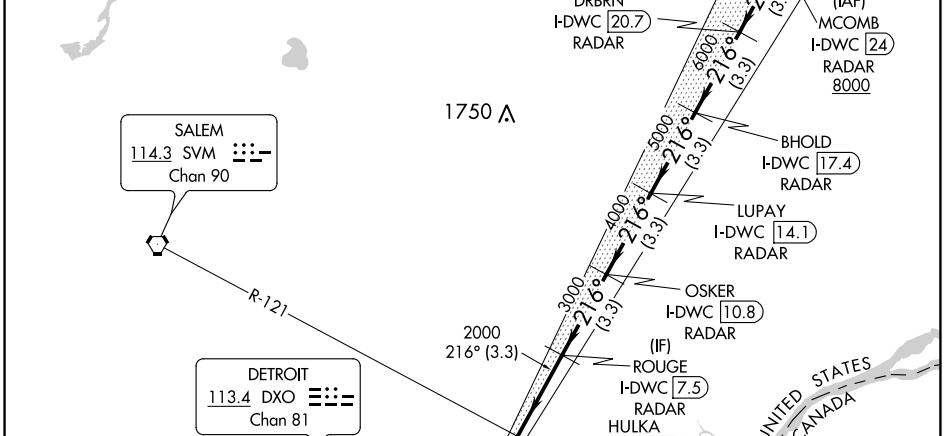
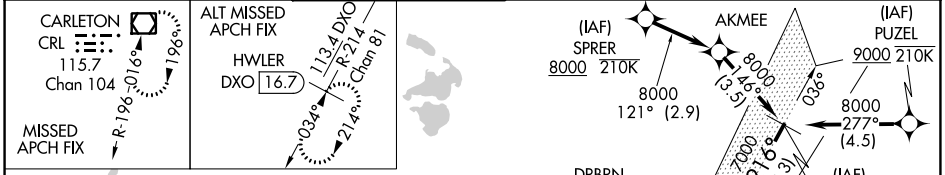
DETROIT METRO WAYNE COUNTY (DTW)

LOC/DME I-DWC 110.7 Chan 44	APP CRS 216°	Rwy Idg TDZE Apt Elev	12003 637 645
---	------------------------	-----------------------------	--

RNAV 1-GPS.
 RNAV 1-DME/DME/IRU or RADAR required for procedure entry. DME or RADAR required.
 Simultaneous approach authorized. Use of FD or AP required during simultaneous operations. Dual VHF comm required. See additional requirements on AAUP.
 Procedure NA when glide slope not available.
 *RVR 1800 authorized with use of FD or AP or HUD to DA.

MALSRS
 MISSED APPROACH:
 Climb to 4000 on heading 216° and CRL VOR/DME R-025 to CRL VOR/DME and hold, continue climb-in-hold to 4000.

D-ATIS 133.675	DETROIT APP CON 124.05 284.0	METRO TOWER 128.125 317.725 PRM 135.775	GND CON 121.8 (NW) 132.725 (SW)	119.45 (NE) 119.25 (SE)	CLNC DEL 120.65	CPDLC
--------------------------	--	---	---	--	---------------------------	-------



ELEV 645	TDZE 637						
4000	CRL R-025	CRL	ROUGE I-DWC 7.5	LUPAY I-DWC 10.8	BHOLD I-DWC 17.4	DRBRN I-DWC 20.7	MCOMB I-DWC 24
3000		HULKA I-DWC 4.2					
2000							
I-DWC DME ANTENNA		216°-8000					
4.3 NM		3.3 NM	3.3 NM	3.3 NM	3.3 NM	3.3 NM	3.3 NM
CATEGORY	A	B	C	D			
S-ILS 22L*	837/24 200 (200-1/2)						

EC-1, 08 AUG 2024 to 05 SEP 2024

EC-1, 08 AUG 2024 to 05 SEP 2024