

LOC/DME I-DTW 110.7	APP CRS 036°	Rwy Idg 11494
Chan 44		TDZE 640
		Apt Elev 645

ILS RWY 4R (CAT II & III)

DETROIT METRO WAYNE COUNTY (DTW)

RNAV 1-GPS

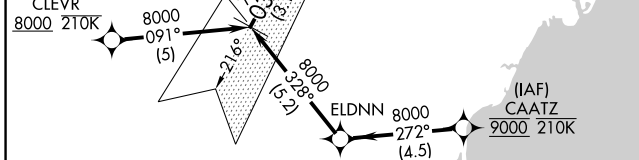
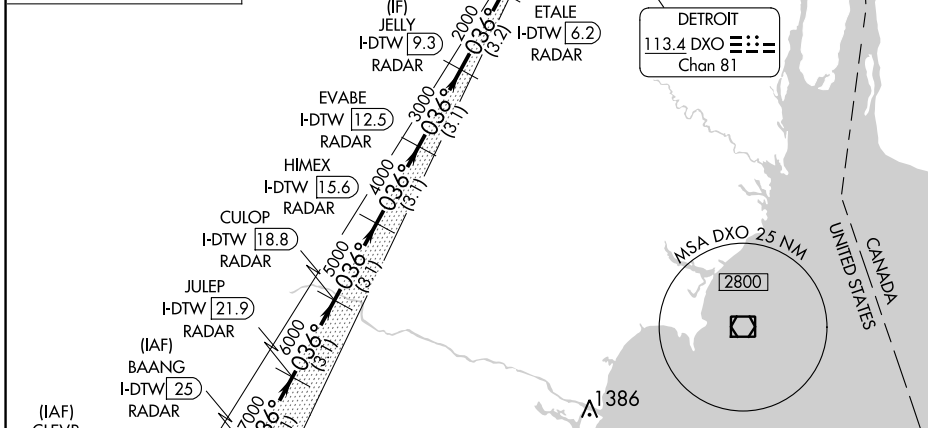
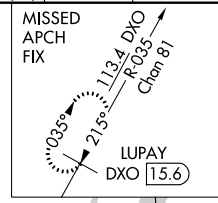
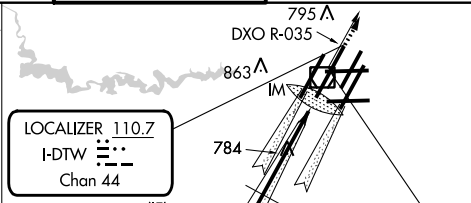
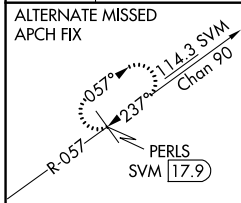
CLEVR, CAATZ and ELDNN: RNAV 1-DME/DME/IRU or GPS required.
 Aircraft not DME/DME/IRU or GPS equipped - RADAR required for procedure entry.
 DME or RADAR required.



MISSED APPROACH: Climb to 4000 on DXO VOR/DME R-035 to LUPAY/DXO VOR/DME/15.6 DME and hold.

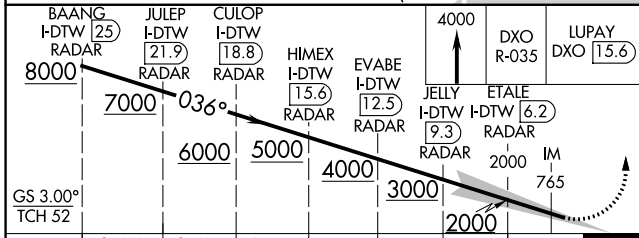
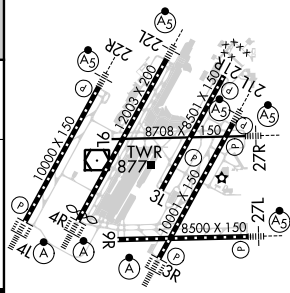
Simultaneous approach authorized.

D-ATIS 133.675	DETROIT APP CON 124.05 284.0	METRO TOWER 128.125 317.725	GND CON 121.8 (NW) 132.725 (SW)	119.45 (NE) 119.25 (SE)	CLNC DEL 120.65	CPDLC
--------------------------	--	---------------------------------------	---	--	---------------------------	-------



ELEV 645	D TDZE 640
----------	-------------------

TDZ/CL Rwy 3s, 4L, 4R and 22R
 REIL Rwy 3L, 9L, 9R and 21R
 HIRL all runways



GS 3.00° TCH 52	3.1 NM	3.1 NM	3.1 NM	3.1 NM	3.1 NM	3.2 NM	4.1 NM	980'
CATEGORY	A							
S-ILS 4R	CAT II RA 104/12				100 DA 740			
S-ILS 4R	CAT III				RVR 06			

CATEGORY II & III ILS - SPECIAL AIRCREW & AIRCRAFT CERTIFICATION REQUIRED

EC-1, 03 OCT 2024 to 31 OCT 2024

EC-1, 03 OCT 2024 to 31 OCT 2024