

LOC/DME I-DWC <b>110.7</b> Chan <b>44</b>	APP CRS <b>216°</b>	Rwy Idg TDZE Apt Elev <b>12003</b> <b>637</b> <b>645</b>
-------------------------------------------------	------------------------	-------------------------------------------------------------------------

# ILS RWY 22L (SA CAT I)

DETROIT METRO WAYNE COUNTY (DTW)

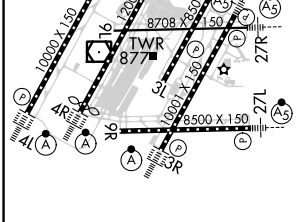
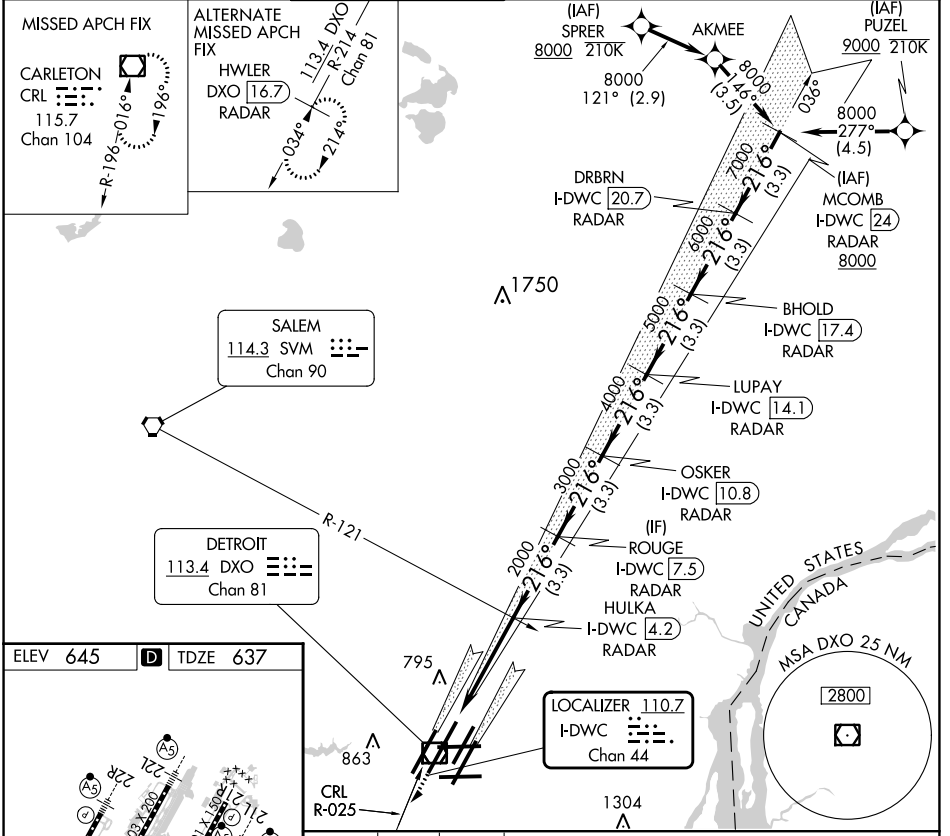
DME or RADAR required. RNAV 1-DME/DME/IRU or RADAR required for procedure entry.

Simultaneous approach authorized.  
Requires specific OPSPEC, MSPEC, or LOA approval and use of HUD to DH.

MALS R (AS)

MISSED APPROACH: Climb to 4000 on heading 216° and CRL VOR/DME R-025 to CRL VOR/DME and hold, continue climb-in-hold to 4000.

D-ATIS <b>133.675</b>	DETROIT APP CON <b>124.05 284.0</b>	METRO TOWER <b>128.125 317.725</b>	GND CON <b>121.8</b> (NW) <b>132.725</b> (SW)	<b>119.45</b> (NE) <b>119.25</b> (SE)	CLNC DEL <b>120.65</b>	CPDLC
--------------------------	----------------------------------------	---------------------------------------	-----------------------------------------------------	------------------------------------------	---------------------------	-------



4000	CRL R-025	CRL	OSKER I-DWC [10.8] RADAR	LUPAY I-DWC [14.1] RADAR	BHOLD I-DWC [17.4] RADAR	DRBRN I-DWC [20.7] RADAR	MCOMB I-DWC [24] RADAR
2000	HULKA I-DWC [4.2] RADAR	ROUGE I-DWC [7.5] RADAR	216°-8000	GS 2.85°	TCH 60		
4.3 NM	3.3 NM	3.3 NM	3.3 NM	3.3 NM	3.3 NM		
CATEGORY A		CATEGORY B		CATEGORY C		CATEGORY D	

TDZ/CL Rwy 3R, 4L, 4R and 22R  
REIL Rwy 3L, 9L, 9R and 21R  
HIRL all runways

S-ILS 22L SA CAT I RA 148/14 150 DA 787

## SA CATEGORY I ILS- SPECIAL AIRCREW & AIRCRAFT CERTIFICATION REQUIRED

EC-1, 31 OCT 2024 to 28 NOV 2024

EC-1, 31 OCT 2024 to 28 NOV 2024