

(CLVIN3.CLVIN) 24137

AL-119 (FAA)

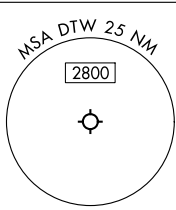
DETROIT METRO WAYNE COUNTY (DTW)

CLVIN THREE DEPARTURE (RNAV) Transition Routes

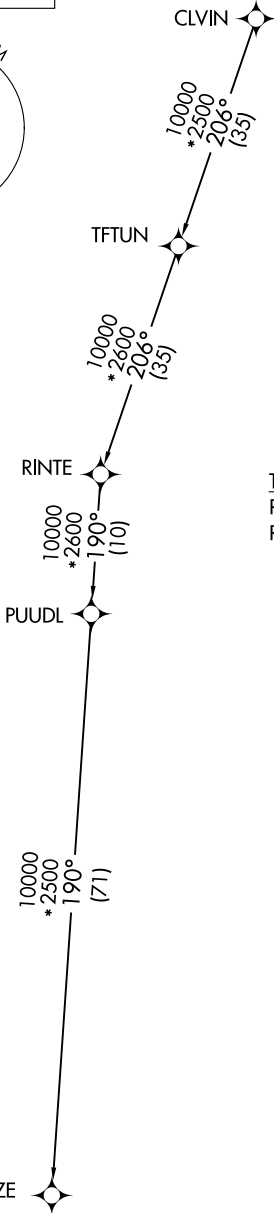
DETROIT, MICHIGAN

**TOP ALTITUDE:
17000**

RNAV 1 - DME/DME/IRU or GPS.
RADAR required.



DETROIT DEP CON
125.525 284.0 (Rwys 4L/R, 22L/R)
132.025 284.0 (Rwys 3L/R, 21L/R, 27L/R)
D-ATIS 118.125
CLNC DEL 120.65
CPDLC
GND CON
121.8 (NW) 119.45 (NE)
132.725 (SW) 119.25 (SE)
METRO TOWER
118.4 317.725 (Rwys 3L/R, 21L/R, 27R)
128.75 317.725 (Rwy 27L)
135.0 317.725 (Rwy 4L/R, 22L/R)



TAKEOFF MINIMUMS:

Rwys 27L/R: Standard.

Rwys 3L/R, 4L/R, 21L/R, 22L/R:

Standard with minimum climb of
500'/NM to 1146.

NOTE: Turbojet departures at/above 10000,
maintain 280K until advised by ATC.

NOTE: Chart not to scale.

(CONTINUED ON FOLLOWING PAGE)

CLVIN THREE DEPARTURE (RNAV) Transition Routes

DETROIT, MICHIGAN

(CLVIN3.CLVIN) 16MAY24

DETROIT METRO WAYNE COUNTY (DTW)

EC-1, 08 AUG 2024 to 05 SEP 2024

EC-1, 08 AUG 2024 to 05 SEP 2024