



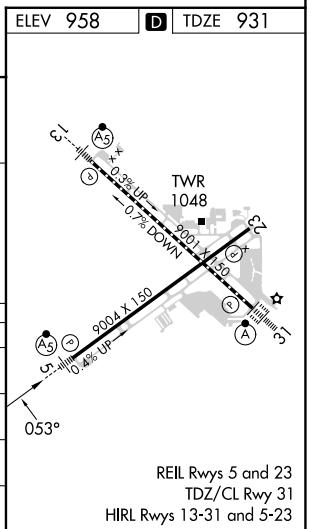
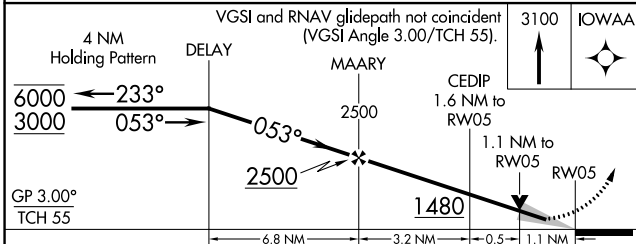
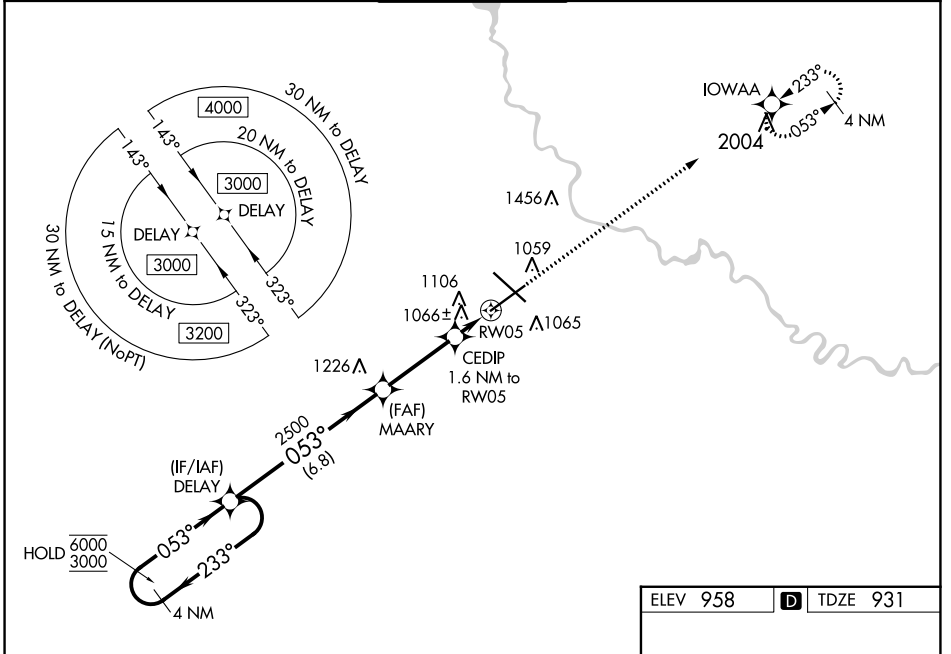
WAAS CH 69202 W05A	APP CRS 053°	Rwy Idg 9004 TDZE 931 Apt Elev 958
--	------------------------	---


RNAV (GPS) RWY 5

DES MOINES INTL (DSM)

RNP APCH - GPS.	MALSR	 MISSED APPROACH: Climb to 3100 direct IOWAA and hold.
 For uncompensated Baro-VNAV systems, LNAV/VNAV NA below -22°C or above 54°C. For inop ALS, increase LNAV/VNAV all Cats visibility to RVR 4500. *RVR 1800 authorized with use of FD or AP or HUD to DA.		

ATIS 119.55	DES MOINES APP CON 123.9 307.15	DES MOINES TOWER 118.3 257.8	GND CON 121.9 348.6	CLNC DEL 134.15 317.55
-----------------------	---	--	-------------------------------	----------------------------------



CATEGORY	A	B	C	D
LPV DA*		1131/24	200 (200-½)	
LNAV/VNAV DA		1247/24	316 (300-½)	
LNAV MDA	1320/24	389 (400-½)	1320/35	389 (400-⅝)
 CIRCLING	1420-1	462 (500-1)	1600-1¾ 642 (700-1¾)	1760-2½ 802 (900-2½)

NC-3, 31 OCT 2024 to 28 NOV 2024

NC-3, 31 OCT 2024 to 28 NOV 2024

REIL Rwy 5 and 23
TDZ/CL Rwy 31
HIRL Rwy 13-31 and 5-23