

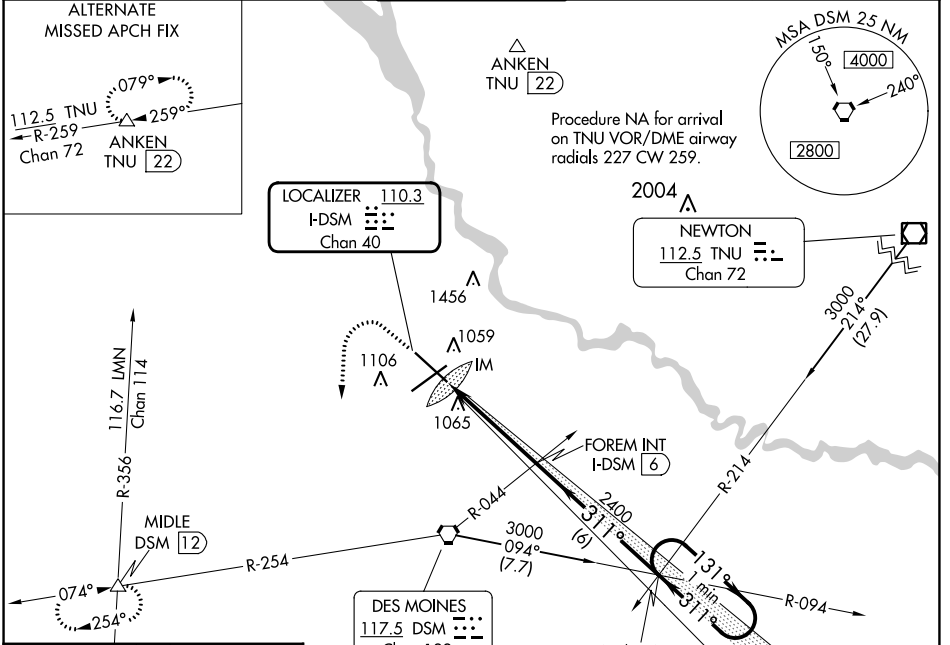
LOC/DME I-DSM <b>110.3</b> Chan 40	APP CRS <b>311°</b>	Rwy ldg TDZE Apt Elev	<b>9001</b> <b>958</b> <b>958</b>
--	------------------------	-----------------------------	---

# ILS or LOC RWY 31

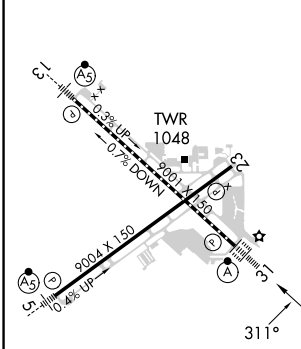
DES MOINES INTL (DSM)

For inop ALS, increase S-ILS 31 Cat E visibility to RVR 4000 and S-LOC 31 Cat E visibility to RVR 6000.	ALSF-2 	MISSED APPROACH: Climb to 1600 then climbing left turn to 3000 on heading 180° and on DSM VORTAC R-254 to MIDDLE INT/12 DME and hold.
---	------------	---

ATIS <b>119.55</b>	DES MOINES APP CON <b>123.9 307.15</b>	DES MOINES TOWER <b>118.3 257.8</b>	GND CON <b>121.9 348.6</b>	CLNC DEL <b>134.15 317.55</b>
-----------------------	---	--	-------------------------------	----------------------------------

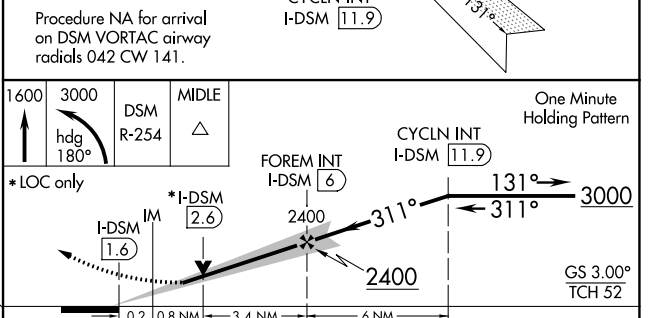


ELEV 958	<b>D</b>	TDZE 958
----------	----------	----------



REIL Rwy 5 and 23  
TDZ/CL Rwy 31  
HIRL Rwy 13-31 and 5-23  
FAF to MAP 4.4 NM

Knots	60	90	120	150	180
Min:Sec	4:24	2:56	2:12	1:46	1:28



CATEGORY	A	B	C	D	E
S-ILS 31	1158/18 200 (200-½)				
S-LOC 31	1340/24	382 (400-½)	1340/35 382 (400-¾)		
<b>C</b> CIRCLING	1420-1	462 (500-1)	1600-1½	1760-2½	1760-2¾ 642 (700-1½) 802 (900-2½) 802 (900-2¾)

NC-3, 31 OCT 2024 to 28 NOV 2024

NC-3, 31 OCT 2024 to 28 NOV 2024