

APP CRS	Rwy Idg	<b>7205</b>
<b>210°</b>	TDZE	<b>5913</b>
	Apt Elev	<b>5918</b>

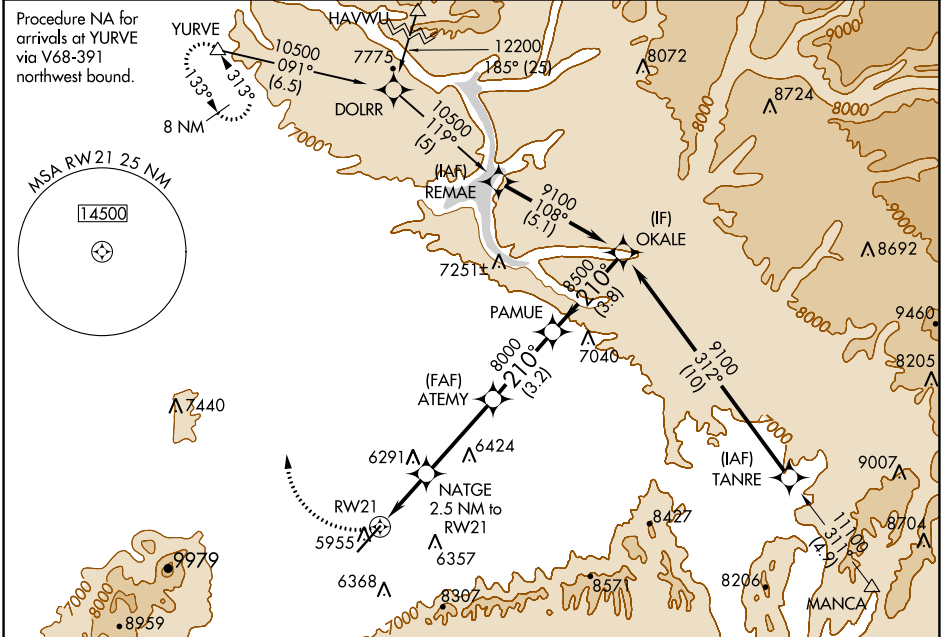
# RNAV (GPS) Y RWY 21

CORTEZ MUNI (C/EZ)

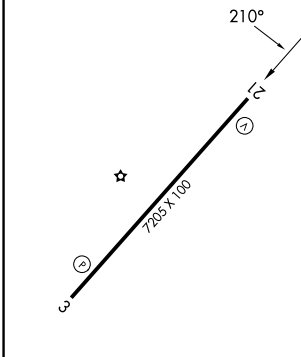
**▼** DME/DME RNP-0.3 NA. When VGSI inop, procedure NA at night. Circling NA southeast of Rwy 3-21.

**▲** MISSED APPROACH: Climbing right turn to 9800 direct YURVE and hold.

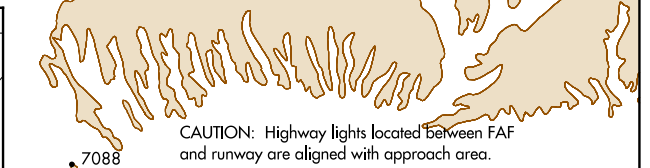
ASOS <b>135.625</b>	DENVER CENTER <b>118.575 348.7</b>	UNICOM <b>122.8 (CTAF)</b> <b>📻</b>
------------------------	---------------------------------------	--



ELEV 5918	<b>D</b>	TDZE 5913
-----------	----------	-----------



REIL Rws 3 and 21 <b>📻</b>
MIRL Rwy 3-21 <b>📻</b>



9800	YURVE				
		NATGE 2.5 NM to RW21	ATEMY	PAMUE	OKALE
		6740	8000	8500	9100
		≤ 3.15° TCH 50			
		2.5 NM	3.6 NM	3.2 NM	3.8 NM

CATEGORY	A	B	C	D
LNAV MDA	6560-1	647 (700-1)	6560-1¾ 647 (700-1¾)	6560-2 647 (700-2)
CIRCLING	6560-1 642 (700-1)	6680-2 762 (800-2)	6800-2¾ 882 (900-2¾)	7060-3 1142 (1200-3)

SW-1, 31 OCT 2024 to 28 NOV 2024

SW-1, 31 OCT 2024 to 28 NOV 2024