

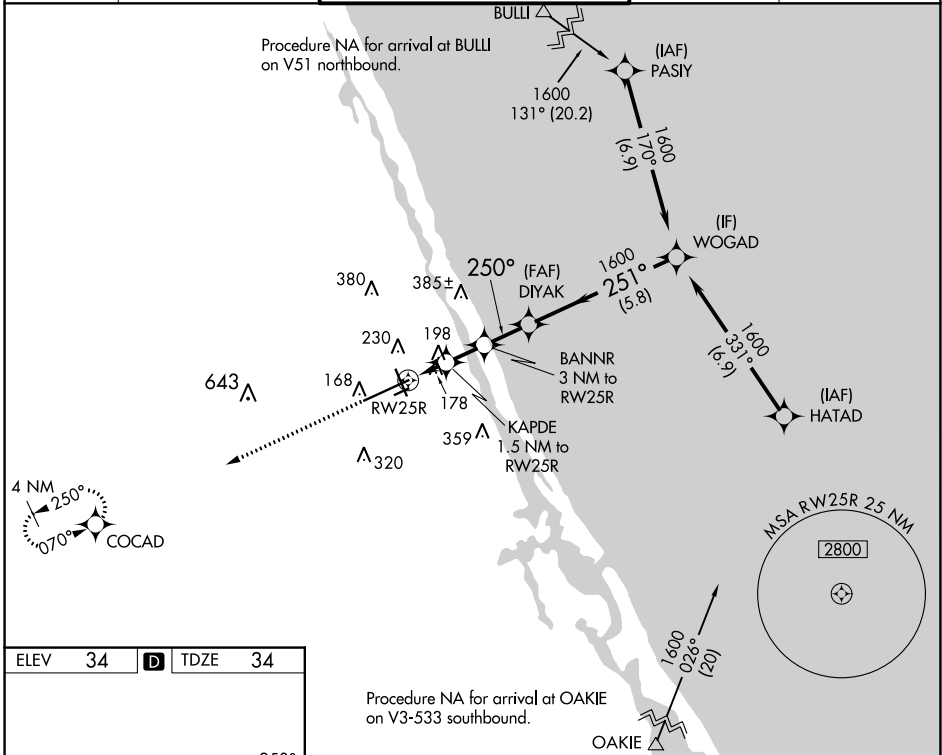
WAAS CH <b>77533</b> <b>W25A</b>	APP CRS <b>250°</b>	Rwy Idg <b>10293</b> TDZE <b>34</b> Apt Elev <b>34</b>
--	------------------------	--

# RNAV (GPS) RWY 25R

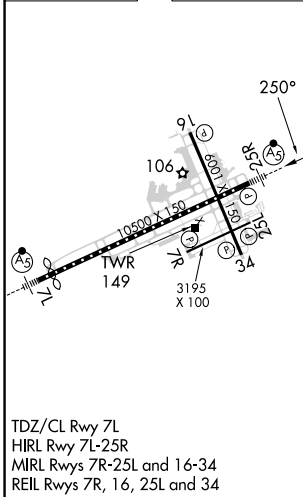
DAYTONA BEACH INTL (DAB)

DME/DME RNP-0.3 NA.		MALSR 	MISSED APPROACH: Climb to 1700 direct COCAD and hold.	
---------------------	--	-----------	---	--

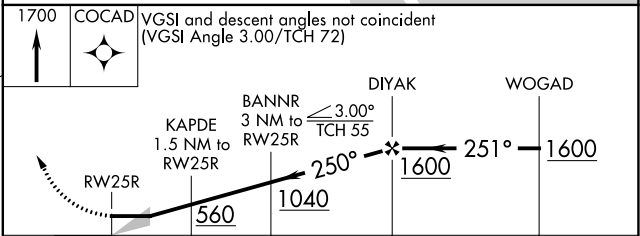
ATIS <b>132.875</b>	DAYTONA APP CON <b>125.8 269.075</b>	DAYTONA TOWER <b>120.7 257.8</b>	GND CON <b>121.9 348.6</b>	CLNC DEL <b>119.3</b>
------------------------	---	-------------------------------------	-------------------------------	--------------------------



ELEV 34	<b>D</b>	TDZE 34
---------	----------	---------



Procedure NA for arrival at OAKIE on V3-533 southbound.



	A	B	C	D
LP MDA	440- <sup>1</sup> / <sub>2</sub>	407 (500- <sup>1</sup> / <sub>2</sub> )	440- <sup>3</sup> / <sub>4</sub>	407 (500- <sup>3</sup> / <sub>4</sub> )
LNAV MDA	460- <sup>1</sup> / <sub>2</sub>	426 (500- <sup>1</sup> / <sub>2</sub> )	460- <sup>3</sup> / <sub>4</sub>	426 (500- <sup>3</sup> / <sub>4</sub> )
<b>C</b> CIRCLING	540-1	506 (600-1)	680- <sup>1</sup> / <sub>4</sub> 646 (700- <sup>1</sup> / <sub>4</sub> )	700-2 666 (700-2)

SE-3, 03 OCT 2024 to 31 OCT 2024

SE-3, 03 OCT 2024 to 31 OCT 2024