

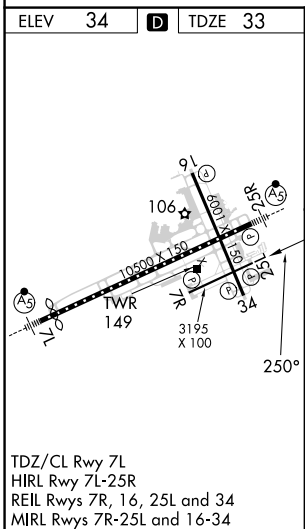
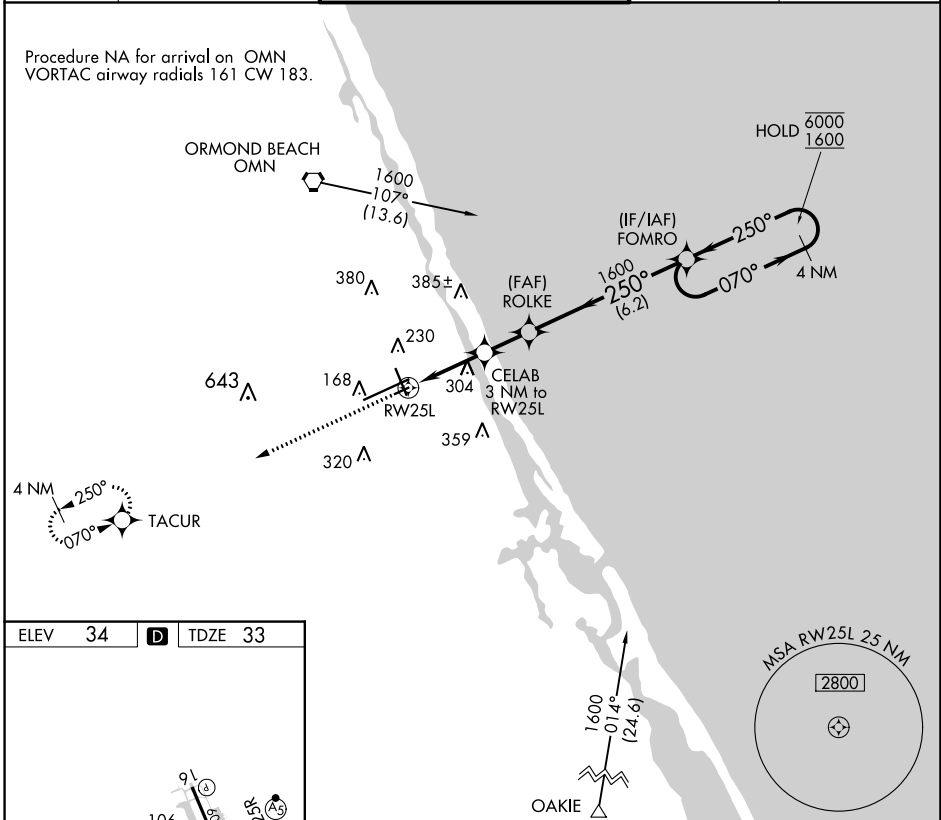
APP CRS	Rwy Idg	3195
250°	TDZE	33
	Apt Elev	34

RNAV (GPS) RWY 25L

DAYTONA BEACH INTL (DAB)

RNP APCH-GPS.		MISSED APPROACH: Climb to 1700 direct TACUR and hold.	
▼ Rwy 25L helicopter visibility reduction below ¾ SM NA.			

ATIS	DAYTONA APP CON	DAYTONA TOWER	GND CON	CLNC DEL
132.875	125.8 269.075	120.7 257.8	121.9 348.6	119.3



1700	TACUR	ROLKE	FOMRO	4 NM Holding Pattern
↑	✧	✧	✧	✧
	CELAB 3.04° 3 NM to TCH 32 RWY 25L	← 250° →	← 250° →	← 070° →
	1.5 NM to RWY 25L	1600	1600	6000
	1020	VGSI and descent angles not coincident (VGSI Angle 3.00/TCH 44).		
	1.5 NM	1.5 NM	6.2 NM	
CATEGORY	A	B	C	D
LNAV MDA	560-1	527 (600-1)	560-1½ 527 (600-1½)	NA

SE-3, 03 OCT 2024 to 31 OCT 2024

SE-3, 03 OCT 2024 to 31 OCT 2024