

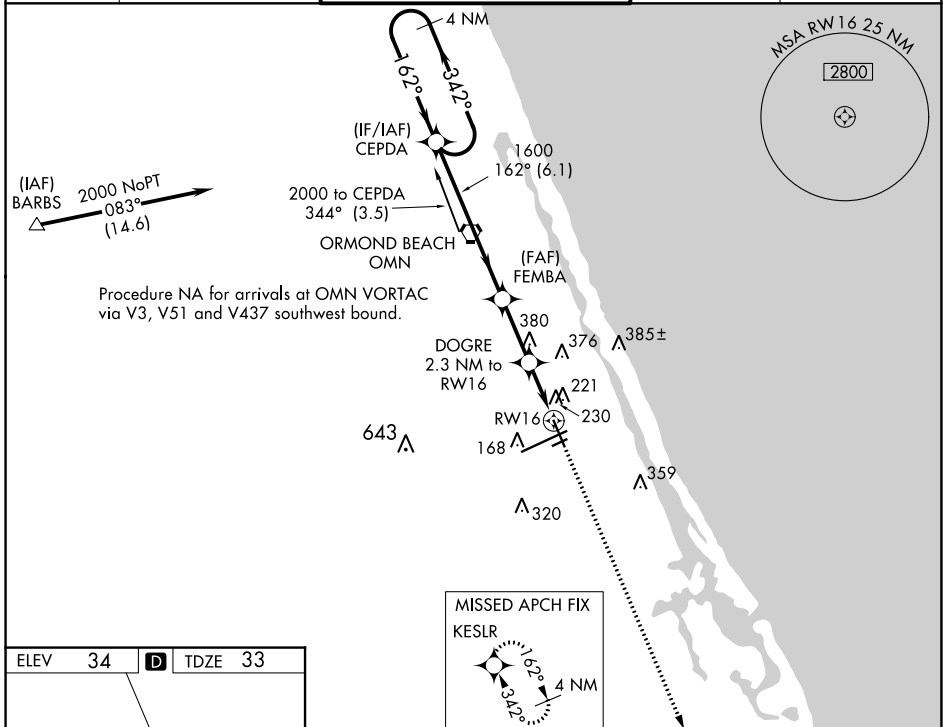
WAAS CH 45529 W16A	APP CRS 162°	Rwy Idg TDZE Apt Elev	5969 33 34
---------------------------------	------------------------	-----------------------------	---------------------------------------

RNAV (GPS) RWY 16

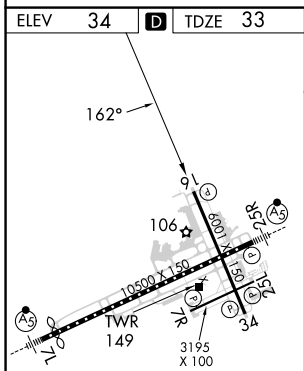
DAYTONA BEACH INTL (DAB)

<p>Baro-VNAV NA below -15° C (5° F). DME/DME RNP-0.3 NA. Helicopter visibility reduction below ¾ SM NA.</p>	<p>MISSED APPROACH: Climb to 1700 direct KESLR and hold.</p>
---	--

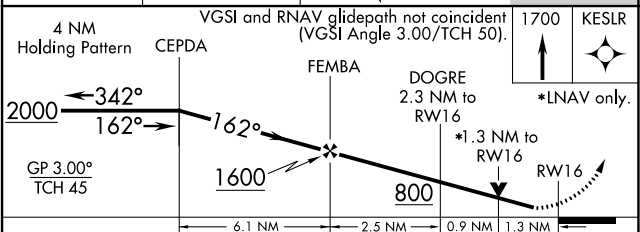
<p>ATIS 132.875</p>	<p>DAYTONA APP CON 125.8 269.075</p>	<p>DAYTONA TOWER 120.7 257.8</p>	<p>GND CON 121.9 348.6</p>	<p>CLNC DEL 119.3</p>
--------------------------------	---	---	---------------------------------------	----------------------------------



Procedure NA for arrivals at OMN VORTAC via V3, V51 and V437 southwest bound.



ELEV 34	D	TDZE 33
<p>TDZ/CL Rwy 7L HIRL Rwy 7L-25R REIL Rwys 7R, 16, 25L and 34 MIRL Rwys 7R-25L and 16-34</p>		



CATEGORY	A	B	C	D
LPV DA	358-1¼ 325 (400-1¼)			
LNAV/VNAV DA	479-1½ 446 (500-1½)			
LNAV MDA	500-1	467 (500-1)	500-1¼ 467 (500-1¼)	500-1½ 467 (500-1½)
C CIRCLING	540-1½	506 (600-1½)	680-1¾ 646 (700-1¾)	700-2 666 (700-2)

SE-3, 03 OCT 2024 to 31 OCT 2024

SE-3, 03 OCT 2024 to 31 OCT 2024