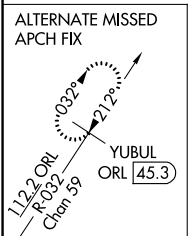
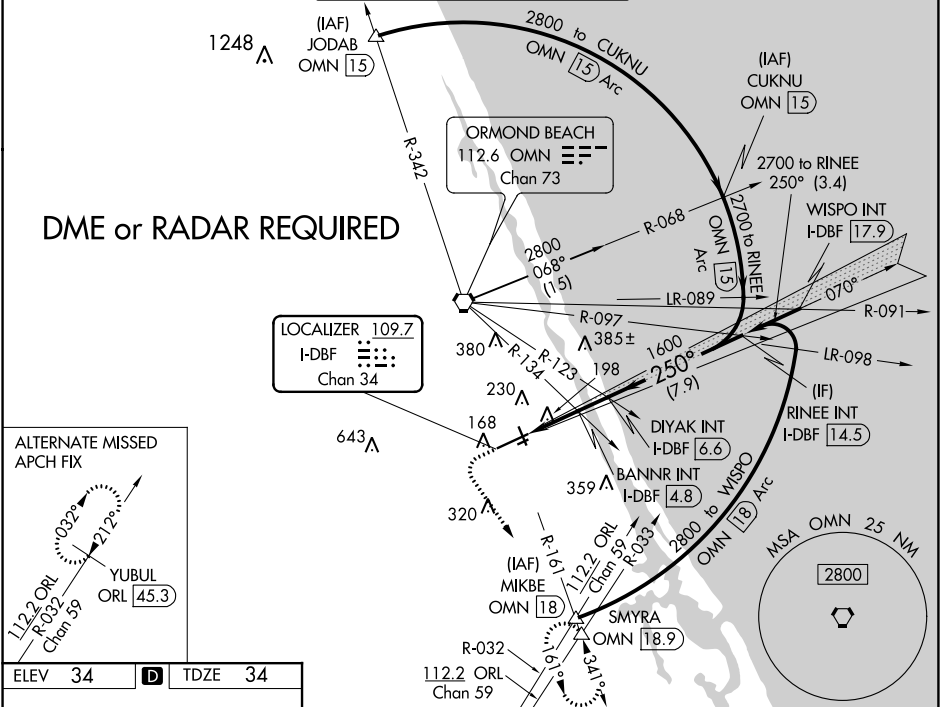


LOC/DME I-DBF 109.7 Chan 34	APP CRS 250°	Rwy Idg TDZE Apt Elev	10293 34 34
--	------------------------	-----------------------------	--

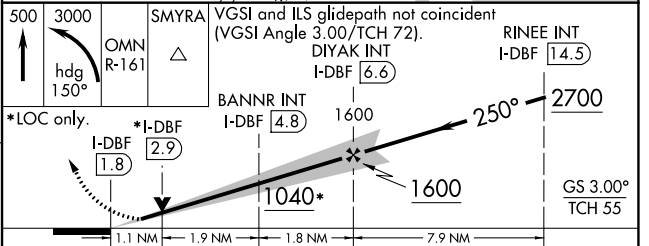
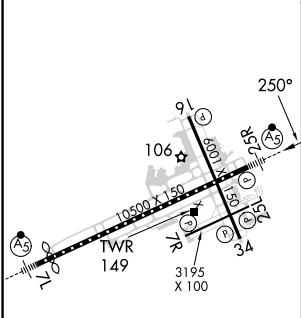
ILS or LOC RWY 25R

DAYTONA BEACH INTL (DAB)

A	MALSR 	MISSED APPROACH: Climb to 500 then climbing left turn to 3000 on heading 150° and OMN VORTAC R-161 to SMYRA INT/OMN 18.9 DME and hold, continue climb-in-hold to 3000.		
ATIS 132.875	DAYTONA APP CON 125.8 269.075	DAYTONA TOWER 120.7 257.8	GND CON 121.9 348.6	CLNC DEL 119.3



ELEV 34	D	TDZE 34
---------	----------	---------



CATEGORY	A	B	C	D
S-ILS 25R	234-1/2		200 (200-1/2)	
S-LOC 25R	1040-3/4 1006 (1100-3/4)	1040-1 1006 (1100-1)	1040-2 1/2	1006 (1100-2 1/2)
C CIRCLING	1040-1 1/4 1006 (1100-1 1/4)	1040-1 1/2 1006 (1100-1 1/2)	1040-3	1006 (1100-3)
BANNR FIX MINIMUMS (DUAL VOR RECEIVERS or DME REQUIRED)				
S-LOC 25R	440-1/2	406 (500-1/2)	440-3/4	406 (500-3/4)
C CIRCLING	540-1	506 (600-1)	680-1 1/4 646 (700-1 1/4)	700-2 666 (600-2)

SE-3, 03 OCT 2024 to 31 OCT 2024

SE-3, 03 OCT 2024 to 31 OCT 2024