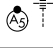
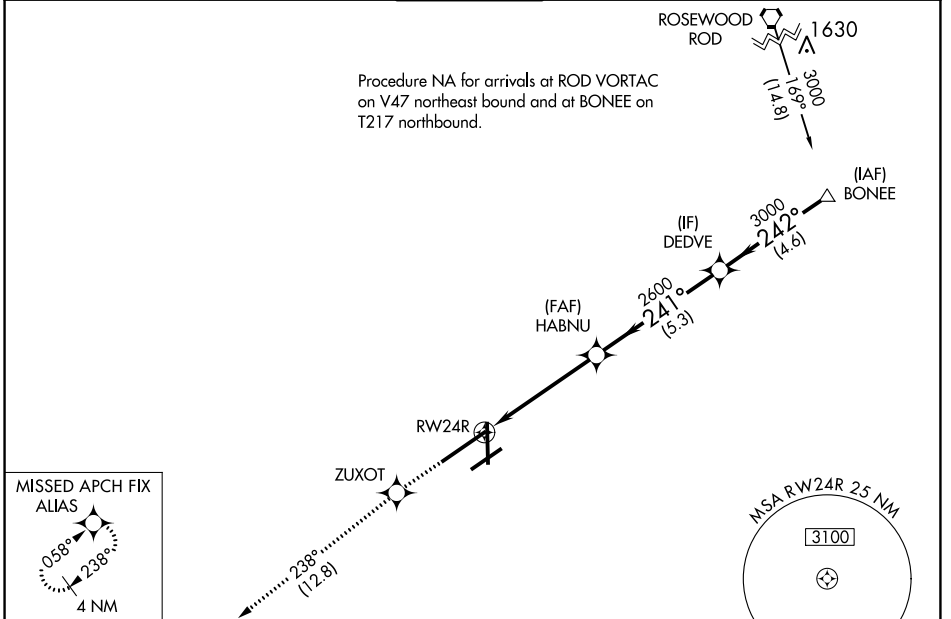


WAAS CH 66013 W24B	APP CRS 241°	Rwy Idg 10900 TDZE 997 Apt Elev 1009
--	------------------------	---

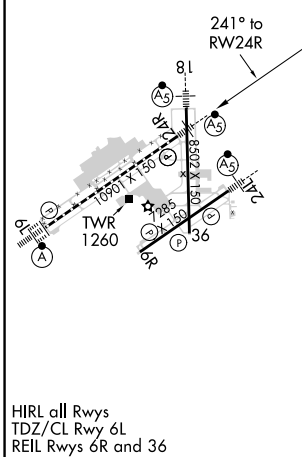
RNAV (GPS) Z RWY 24R

JAMES M COX DAYTON INTL (DAY)

RNP APCH.		MALSR  MISSED APPROACH: Climb to 3000 direct ZUXOT and on track 238° to ALIAS and hold.		
ATIS 125.8	COLUMBUS APP CON 118.425 323.15	DAYTON TOWER 119.9 257.7	GND CON 121.9	CLNC DEL 121.75



ELEV 1009	D	TDZE 997
-----------	----------	----------



3000	ZUXOT	tr 238°	ALIAS				
	HABNU	2600	DEDVE	BONEE			
*LNAV only.							
	RW24R	*1.2 NM to RW24R	2600	241°	242°	3000	3000
		1.2 NM	3.7 NM	5.3 NM	4.6 NM		GP 3.00° TCH 55
CATEGORY	A		B		C	D	
LPV DA			1203/24		206 (200-½)		
LNAV/VNAV DA			1294/24		297 (300-½)		
LNAV MDA	1440/24		443 (500-½)		1440/45		443 (500-¾)
C CIRCLING	1580-1		571 (600-1)		1580-1½ 571 (600-1½)		1640-2 631 (700-2)