

WAAS CH <b>90414</b> <b>W06B</b>	APP CRS <b>061°</b>	Rwy Idg TDZE Apt Elev	<b>7001</b> <b>1009</b> <b>1009</b>
--	------------------------	-----------------------------	---

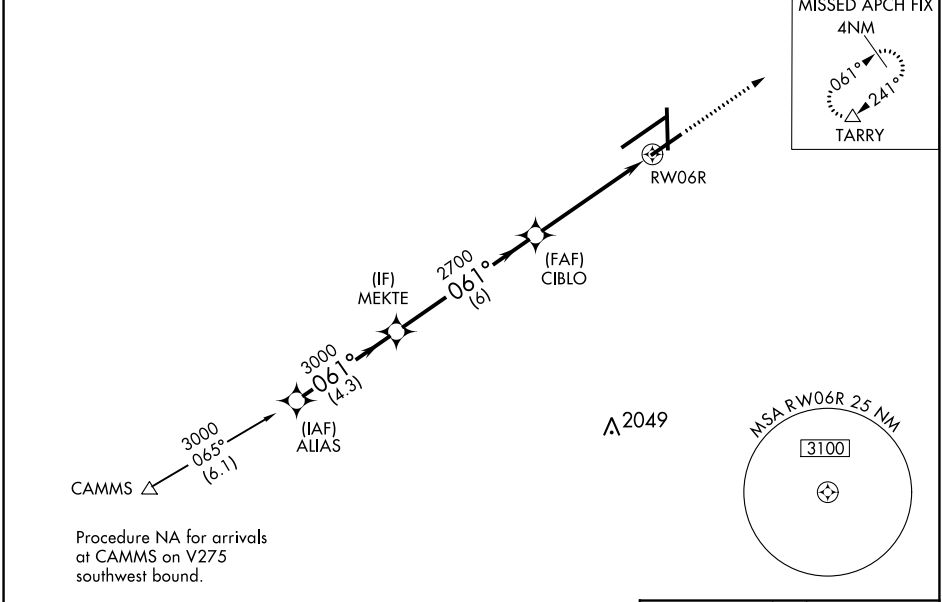
# RNAV (GPS) RWY 6R

JAMES M COX DAYTON INTL (DAY)

▼ For uncompensated Baro-VNAV systems, LNAV/VNAV NA below -19°C (-4°F) or above 54°C (130°F). Rwy 6R helicopter visibility reduction below ¾ SM NA. Simultaneous approach authorized. DME/DME RNP-0.3 NA. LNAV procedure NA during simultaneous operations. Use of FD or AP required during simultaneous operations.

MISSED APPROACH: Climb to 3000 direct TARRY and hold.

ATIS <b>125.8</b>	COLUMBUS APP CON <b>118.425 323.15</b>	DAYTON TOWER <b>119.9 257.7</b>	GND CON <b>121.9</b>	CLNC DEL <b>121.75</b>
----------------------	---	------------------------------------	-------------------------	---------------------------



EC-2, 14 JUL 2022 to 11 AUG 2022

EC-2, 14 JUL 2022 to 11 AUG 2022

ELEV 1009		D		TDZE 1009	
VGSi and RNAV glidepath not coincident (VGSi Angle 3.00/TCH 50).					
ALIAS 3000 GP 3.00° TCH 53		MEKTE 3000		CIBLO 2700 RW06R	
4.3 NM		6 NM		3.6 NM	
A		B		C	
LPV DA	1259-¾		250 (300-¾)		
LNAV/VNAV DA	1496-1¾		487 (500-1¾)		
LNAV MDA	1520-1	511 (600-1)	1520-1½	511 (600-1½)	1520-1¾
CIRCLING	1580-1	571 (600-1)	1580-1½	571 (600-1½)	1640-2
			631 (700-2)		

