

APP CRS 005°	Rwy Idg 8502
	TDZE 1008
	Apt Elev 1009

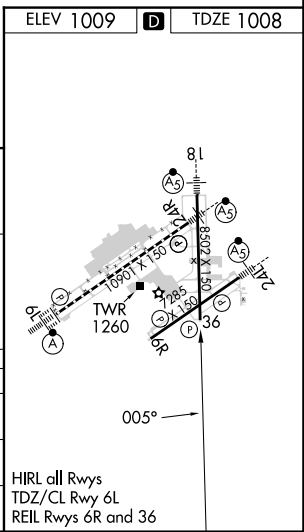
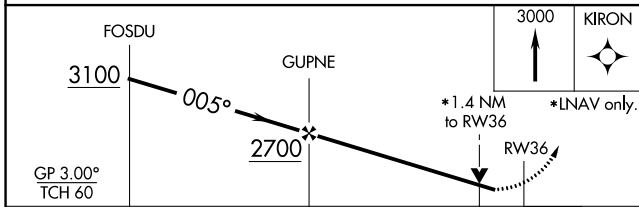
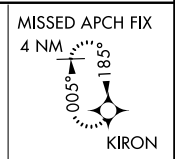
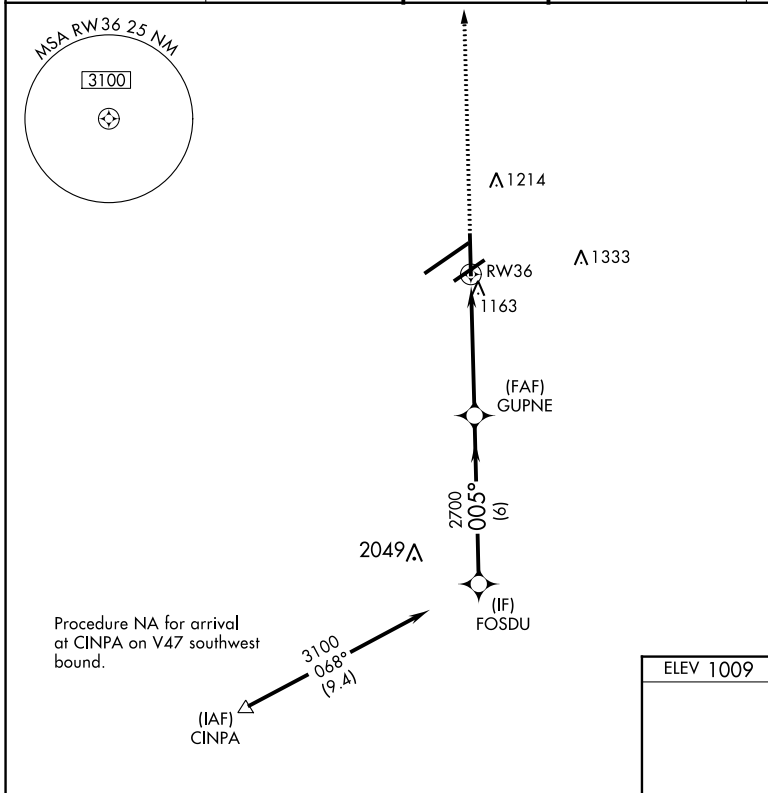
RNAV (GPS) RWY 36

JAMES M COX DAYTON INTL (DAY)

▽ For uncompensated Baro-VNAV systems, LNAV/VNAV NA below -19°C (-2°F) or above 54°C (130°F). DME/DME RNP-0.3 NA.
Rwy 36 helicopter visibility reduction below ¾ SM NA.

MISSED APPROACH: Climb to 3000 direct to KIRON and hold.

ATIS 125.8	COLUMBUS APP CON 134.45 323.15	DAYTON TOWER 119.9 257.7	GND CON 121.9	CLNC DEL 121.75
----------------------	--	------------------------------------	-------------------------	---------------------------



CATEGORY	A	B	C	D
LNAV/VNAV DA	1449-1½ 441 (500-1½)			
LNAV MDA	1500-1 492 (500-1)	1500-1½ 492 (500-1½)	1500-1½ 492 (500-1½)	1500-1½ 492 (500-1½)
C CIRCLING	1580-1 571 (600-1)	1580-1½ 571 (600-1½)	1580-1½ 571 (600-1½)	1640-2 631 (700-2)

EC-2, 05 SEP 2024 to 03 OCT 2024

EC-2, 05 SEP 2024 to 03 OCT 2024