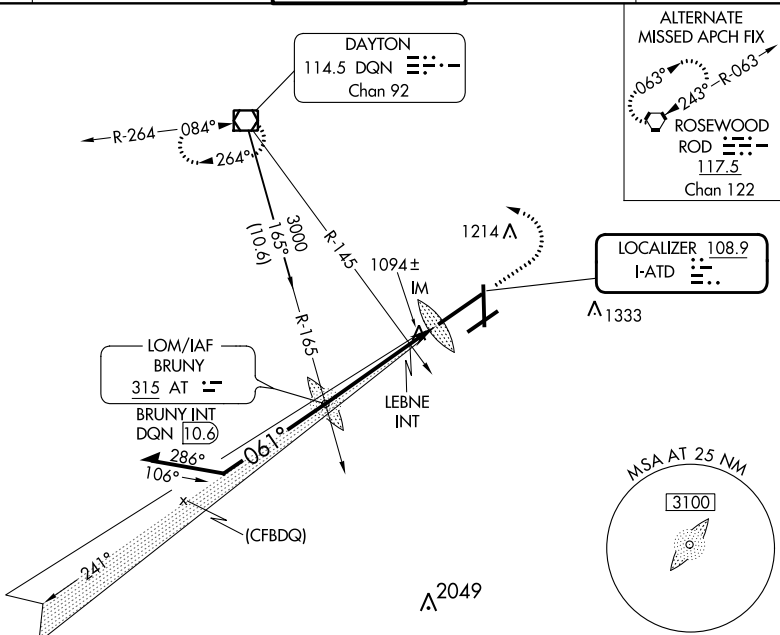


LOC I-ATD 108.9	APP CRS 061°	Rwy Idg 10900 TDZE 998 Apt Elev 1009
---------------------------	------------------------	---

ILS or LOC RWY 6L

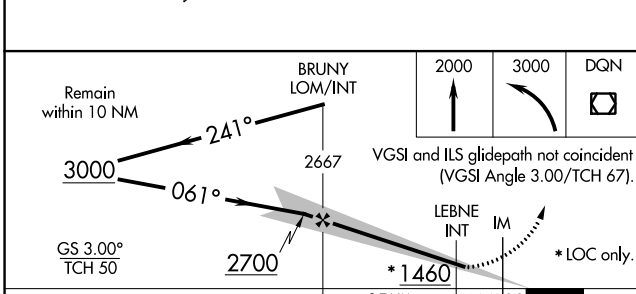
JAMES M COX DAYTON INTL (DAY)

<p>▽ Simultaneous approach authorized. ▲ For inop ALSF-2, increase S-LOC 6L Cat C/D visibility to 1½ mile.</p>	<p>ALSF-2</p>	<p>MISSED APPROACH: Climb to 2000 then climbing left turn to 3000 direct DQN VOR/DME and hold.</p>		
<p>ATIS 125.8</p>	<p>COLUMBUS APP CON 134.45 323.15</p>	<p>DAYTON TOWER 119.9 257.7</p>	<p>GND CON 121.9</p>	<p>CINC DEL 121.75</p>



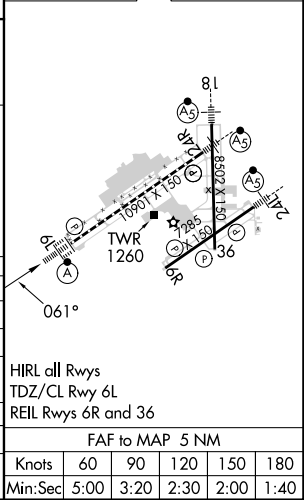
EC-2, 05 SEP 2024 to 03 OCT 2024

EC-2, 05 SEP 2024 to 03 OCT 2024



ELEV 1009	D	TDZE 998
-----------	----------	----------

CATEGORY	A	B	C	D
S-ILS 6L	1198/18 200 (200-½)			
S-LOC 6L	1460/24	462 (500-½)	1460/50	462 (500-1)
C CIRCLING	1580-1	571 (600-1)	1580-1½ 571 (600-1½)	1640-2 631 (700-2)
LEBNE FIX MINIMUMS (DUAL VOR RECEIVERS REQUIRED)				
S-LOC 6L	1380/24	382 (400-½)	1380/35	382 (400-¾)
C CIRCLING	1580-1	571 (600-1)	1580-1½ 571 (600-1½)	1640-2 631 (700-2)



FAF to MAP 5 NM					
Knots	60	90	120	150	180
Min:Sec	5:00	3:20	2:30	2:00	1:40