

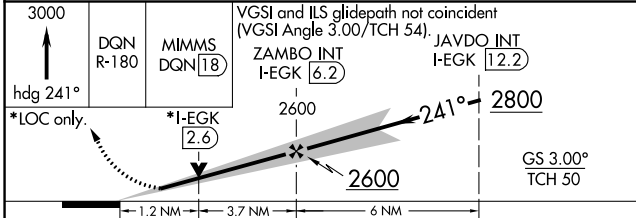
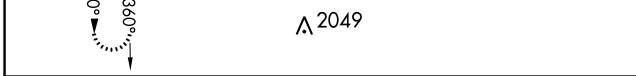
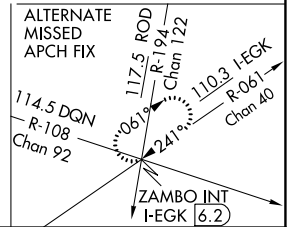
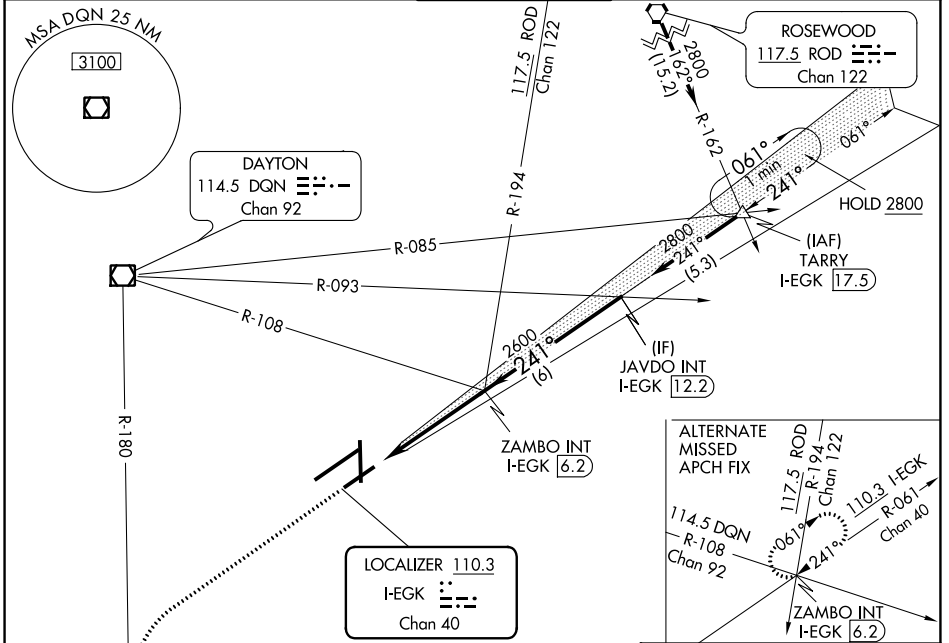
LOC I-EGK 110.3 Chan 40	APP CRS 241°	Rwy Idg TDZE Apt Elev	7001 1007 1009
--------------------------------------	------------------------	-----------------------------	---

ILS or LOC RWY 24L

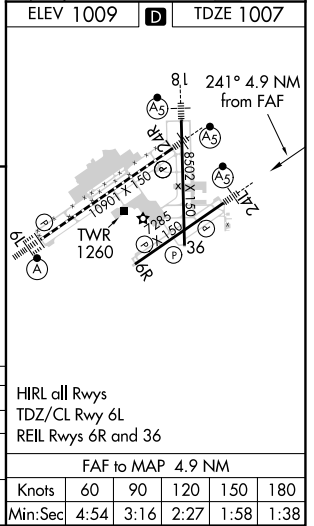
JAMES M COX DAYTON INTL (DAY)

DME required.		MALSR	MISSED APPROACH: Climb to 3000 on heading 241° and DQN R-180 to MIMMS/DQN 18 DME and hold.	
Simultaneous approach authorized. # RVR 1800 authorized with use of FD or AP or HUD to DA.				

ATIS 125.8	COLUMBUS APP CON 118.425 323.15	DAYTON TOWER 119.9 257.7	GND CON 121.9	CLNC DEL 121.75
----------------------	---	------------------------------------	-------------------------	---------------------------



CATEGORY	A	B	C	D
S-ILS 24L #	1207/24		200 (200-½)	
S-LOC 24L	1440/24 433 (500-½)		1440/40 433 (500-¾)	
CIRCLING	1580-1 571 (600-1)		1580-1½ 631 (700-2)	



EC-2, 14 JUL 2022 to 11 AUG 2022

EC-2, 14 JUL 2022 to 11 AUG 2022