

LOC I-DAY <b>108.3</b>	APP CRS <b>185°</b>	Rwy Idg 8502
		TDZE 996
		Apt Elev 1009

# ILS or LOC RWY 18

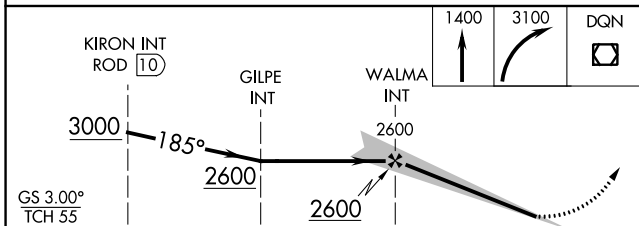
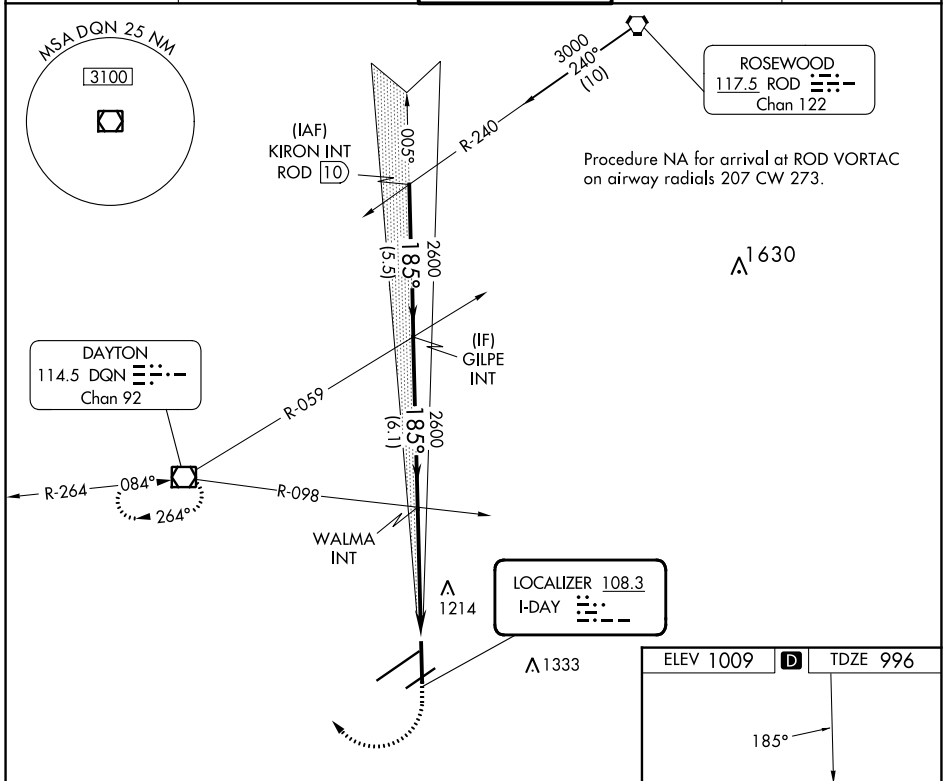
JAMES M COX DAYTON INTL (DAY)

**▼** For inop ALS, increase S-LOC 18 Cat C/D visibility to RVR 6000.  
 \*\* RVR 1800 authorized with use of FD or AP or HUD to DA.

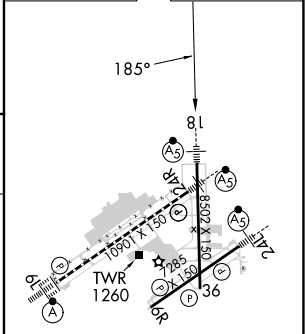
**MALSR**

**MISSED APPROACH:** Climb to 1400 then climbing right turn to 3100 direct DQN VOR/DME and hold.

ATIS <b>125.8</b>	COLUMBUS APP CON <b>134.45 323.15</b>	DAYTON TOWER <b>119.9 257.7</b>	GND CON <b>121.9</b>	CINC DEL <b>121.75</b>
----------------------	--	------------------------------------	-------------------------	---------------------------



ELEV 1009	<b>D</b>	TDZE 996
-----------	----------	----------



CATEGORY	A	B	C	D
S-ILS 18 **	1196/24 200 (200-½)			
S-LOC 18	1400/24	404 (400-½)	1400/40	404 (400-¾)
<b>C</b> CIRCLING	1580-1	571 (600-1)	1580-1½ 571 (600-1½)	1640-2 631 (700-2)

HIRL all Rwys					
TDZ/CL Rwy 6L					
REIL Rwys 6R and 36					
FAF to MAP 4.9 NM					
Knots	60	90	120	150	180
Min:Sec	4:54	3:16	2:27	1:58	1:38

EC-2, 03 OCT 2024 to 31 OCT 2024

EC-2, 03 OCT 2024 to 31 OCT 2024