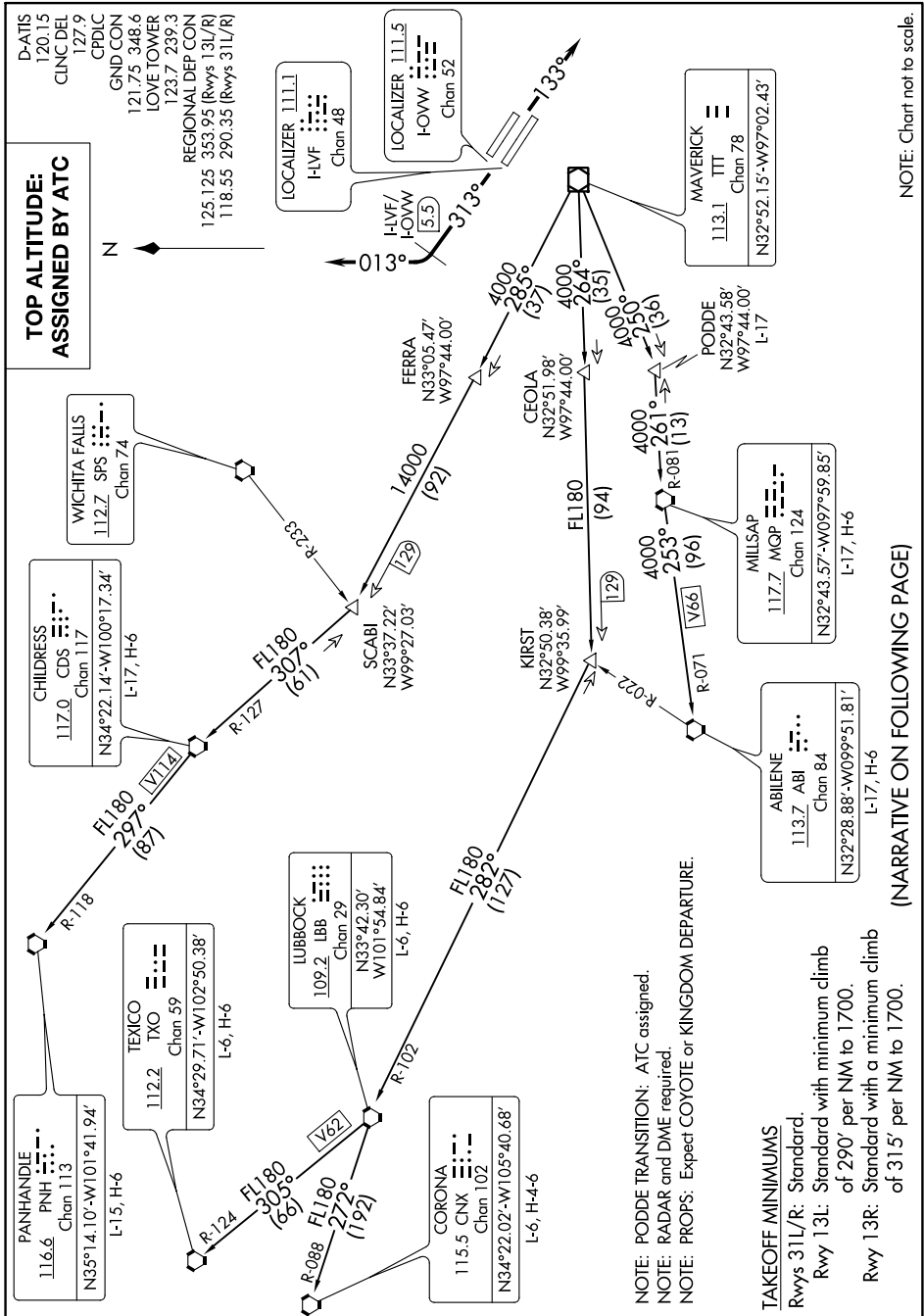


# WORTH SIX DEPARTURE

SC-2, 07 OCT 2021 to 04 NOV 2021



NOTE: Chart not to scale.

(NARRATIVE ON FOLLOWING PAGE)

SC-2, 07 OCT 2021 to 04 NOV 2021

# WORTH SIX DEPARTURE

**TAKEOFF MINIMUMS**  
 Rwy 31L/R: Standard.  
 Rwy 13L: Standard with minimum climb of 290' per NM to 1700.  
 Rwy 13R: Standard with a minimum climb of 315' per NM to 1700.

NOTE: PODDE TRANSITION: ATC assigned.  
 NOTE: RADAR and DME required.  
 NOTE: PROPS: Expect COYOTE or KINGDOM DEPARTURE.