

WAAS CH 99723 W13B	APP CRS 133°	Rwy Idg 7352 TDZE 485 Apt Elev 487
--	------------------------	---

RNAV (GPS) Z RWY 13L

DALLAS LOVE FLD (DAL)

RNP APCH.

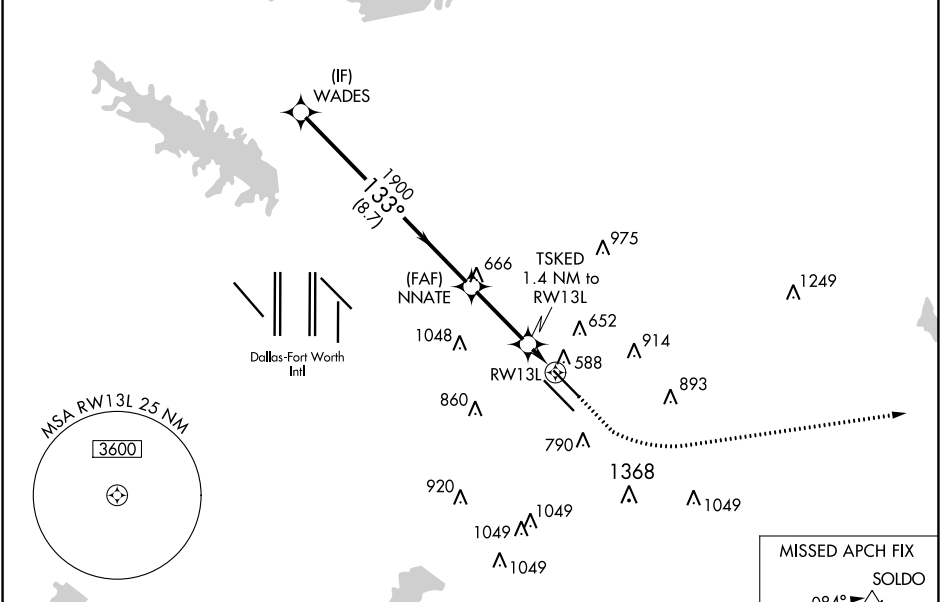
Simultaneous approach authorized. Use of FD or AP required during simultaneous operations.
 LNAV procedure NA during simultaneous operations. For uncompensated Baro-VNAV systems, procedure NA below -6°C or above 54°C. For inop ALS, increase LNAV/VNAV all Cats visibility to RVR 4500 and LNAV Cats C/D visibility to RVR 5500.

MALSRL



MISSED APPROACH:
Climb to 1000 then climbing left turn to 3000 direct SOLDO and hold.

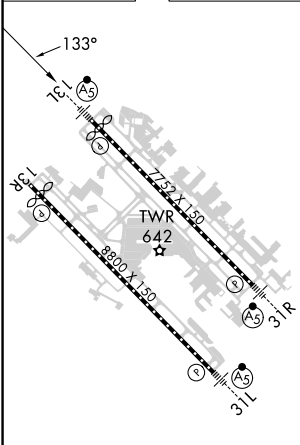
D-ATIS 120.15	REGIONAL APP CON NORTH 124.3 282.275 SOUTH 125.2 343.65	LOVE TOWER 123.7 239.3	GND CON 121.75 348.6	CLNC DEL 127.9	CPDLC
-------------------------	---	----------------------------------	--------------------------------	--------------------------	-------



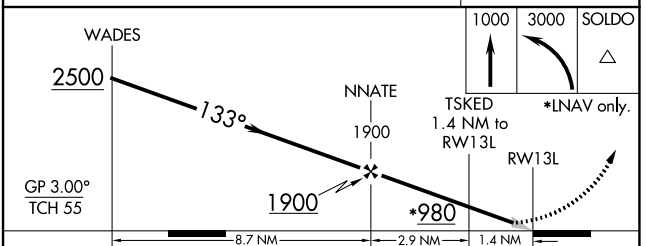
SC-2, 08 AUG 2024 to 05 SEP 2024

SC-2, 08 AUG 2024 to 05 SEP 2024

ELEV 487	D	TDZE 485
-----------------	----------	-----------------



TDZ/CL Rwy 13L and 31L
HIRL Rwy 13L-31R, and 13R-31L



CATEGORY	A	B	C	D
LPV DA		685/18	200 (200-½)	
LNAV/VNAV DA		764/24	279 (300-½)	
LNAV MDA	840/24	355 (400-½)	840/30	355 (400-¾)
<input checked="" type="checkbox"/> CIRCLING	1000-1 513 (600-1)	1140-1 653 (700-1)	1220-2 733 (800-2)	1520-3 1033 (1100-3)