

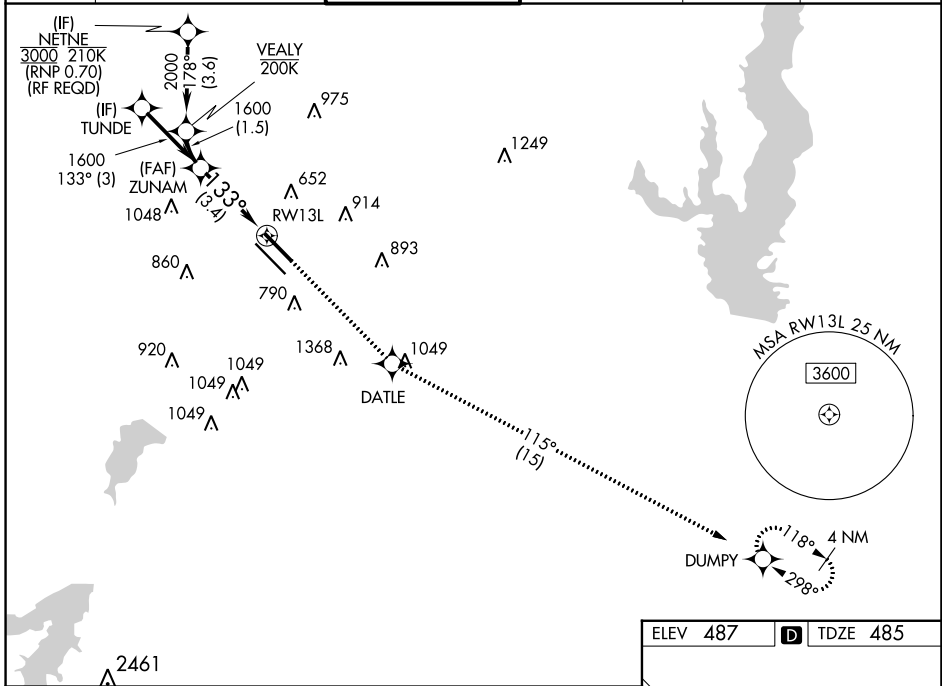
APP CRS	Rwy Idg	7352
133°	TDZE	485
	Apt Elev	487

RNAV (RNP) X RWY 13L

DALLAS LOVE FLD (DAL)

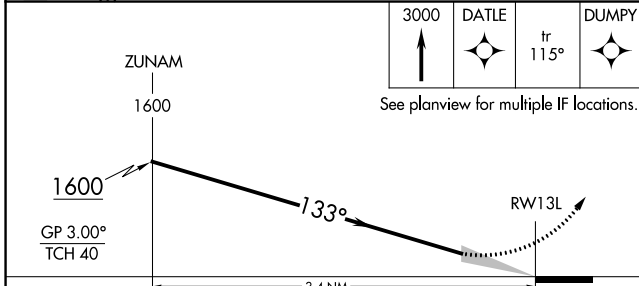
RNP AR APCH.		MALSR	MISSED APPROACH: Climb to 3000 direct DATLE and on track 115° to DUMPY and hold.
Simultaneous approach authorized. For uncompensated Baro-VNAV systems, procedure NA below -6°C or above 54°C. For inop ALS, increase RNP 0.11 all Cats visibility to RVR 4500.			

D-ATIS	REGIONAL APP CON	LOVE TOWER	GND CON	CINC DEL	CPDLC
120.15	NORTH 124.3 282.275 SOUTH 125.2 343.65	123.7 239.3	121.75 348.6	127.9	



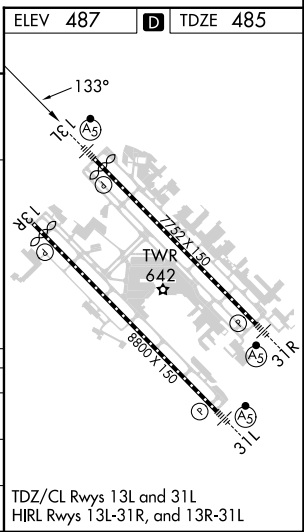
SC-2, 03 OCT 2024 to 31 OCT 2024

SC-2, 03 OCT 2024 to 31 OCT 2024



CATEGORY	A	B	C	D
RNP 0.11 DA		754/24	269 (300-½)	
RNP 0.30 DA		846/40	361 (400-¾)	

AUTHORIZATION REQUIRED



TDZ/CL Rwws 13L and 31L
HIRL Rwws 13L-31R, and 13R-31L