


APP CRS	Rwy Idg	7352
	TDZE	485
133°	Apt Elev	487

RNAV (RNP) W RWY 13L

DALLAS LOVE FLD (DAL)

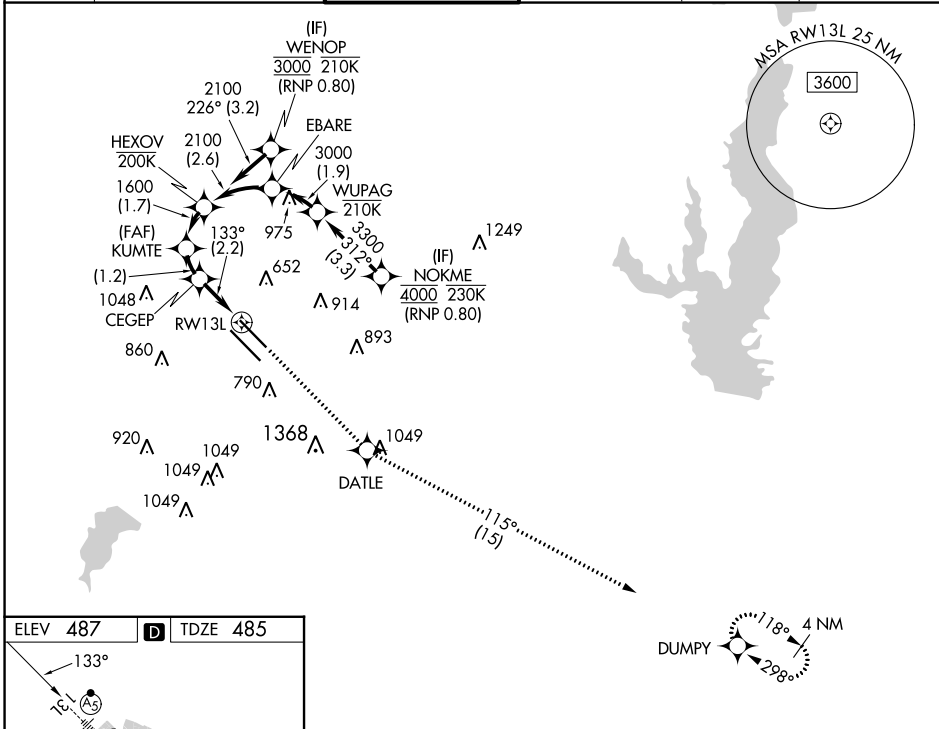
RNP AR APCH. RF required.

Simultaneous approach authorized. For uncompensated Baro-VNAV systems, procedure NA below -6°C or above 54°C. For inop ALS, increase RNP 0.11 all Cats visibility to RVR 4500.

MALSR 

MISSED APPROACH: Climb to 3000 direct DATLE and on track 115° to DUMPY and hold.

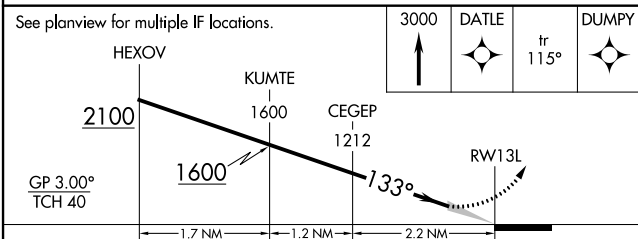
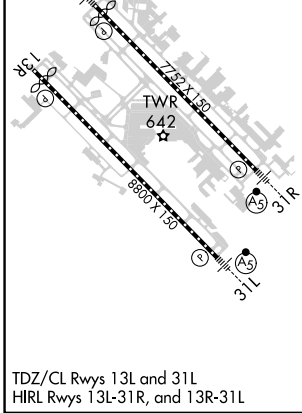
D-ATIS	REGIONAL APP CON	LOVE TOWER	GND CON	CLNC DEL	CPDLC
120.15	NORTH 124.3 282.275 SOUTH 125.2 343.65	123.7 239.3	121.75 348.6	127.9	



SC-2, 03 OCT 2024 to 31 OCT 2024

SC-2, 03 OCT 2024 to 31 OCT 2024

ELEV 487	D	TDZE 485
-----------------	----------	-----------------



CATEGORY	A	B	C	D
RNP 0.11 DA	754/24 269 (300-1/2)			
RNP 0.30 DA	846/40 361 (400-3/4)			

TDZ/CL Rwy 13L and 31L
HIRL Rwy 13L-31R, and 13R-31L

RNAV (RNP) W RWY 13L