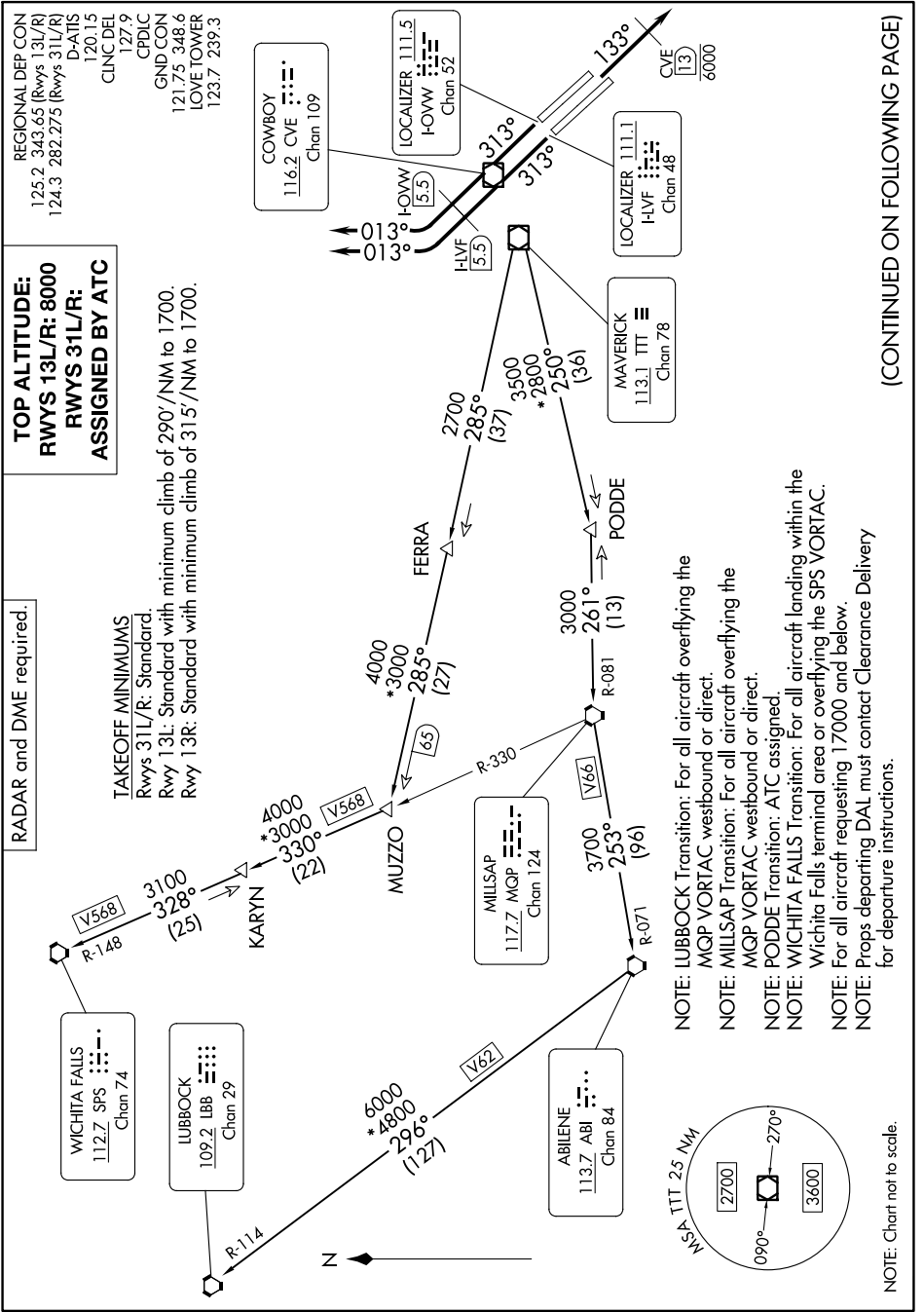


# KINGDOM FOUR DEPARTURE

SC-2, 08 AUG 2024 to 05 SEP 2024



**TOP ALTITUDE:**  
 RWYS 13L/R: 8000  
 RWYS 31L/R: 8000  
 ASSIGNED BY ATC

**TAKEOFF MINIMUMS**  
 RWYS 31L/R: Standard.  
 Rwy 13L: Standard with minimum climb of 290'/NM to 1700.  
 Rwy 13R: Standard with minimum climb of 315'/NM to 1700.

**RADAR and DME required.**

**NOTE:** LUBBOCK Transition: For all aircraft overflying the MQP VORTAC westbound or direct.  
**NOTE:** MILLSAP Transition: For all aircraft overflying the MQP VORTAC westbound or direct.  
**NOTE:** PODDE Transition: ATC assigned.  
**NOTE:** WICHITA FALLS Transition: For all aircraft landing within the Wichita Falls terminal area or overflying the SPS VORTAC.  
**NOTE:** For all aircraft requesting 17000 and below.  
**NOTE:** Props departing DAL must contact Clearance Delivery for departure instructions.

**NOTE:** Chart not to scale.

(CONTINUED ON FOLLOWING PAGE)

# KINGDOM FOUR DEPARTURE

SC-2, 08 AUG 2024 to 05 SEP 2024