

# JOE POOL SEVEN DEPARTURE

**TOP ALTITUDE:**  
**RWYS 13L/13R: 8000**  
**RWYS 31L/31R: ASSIGNED BY ATC**

REGIONAL DEP CON  
125.125 353.95 (Rwys 13L/R)  
118.55 290.35 (Rwys 31L/R)  
D-ATIS 120.15  
CLNC DEL 127.9  
CPDLC  
GND CON 121.75 348.6  
LOVE TOWER 123.7 239.3

RADAR and DME required.

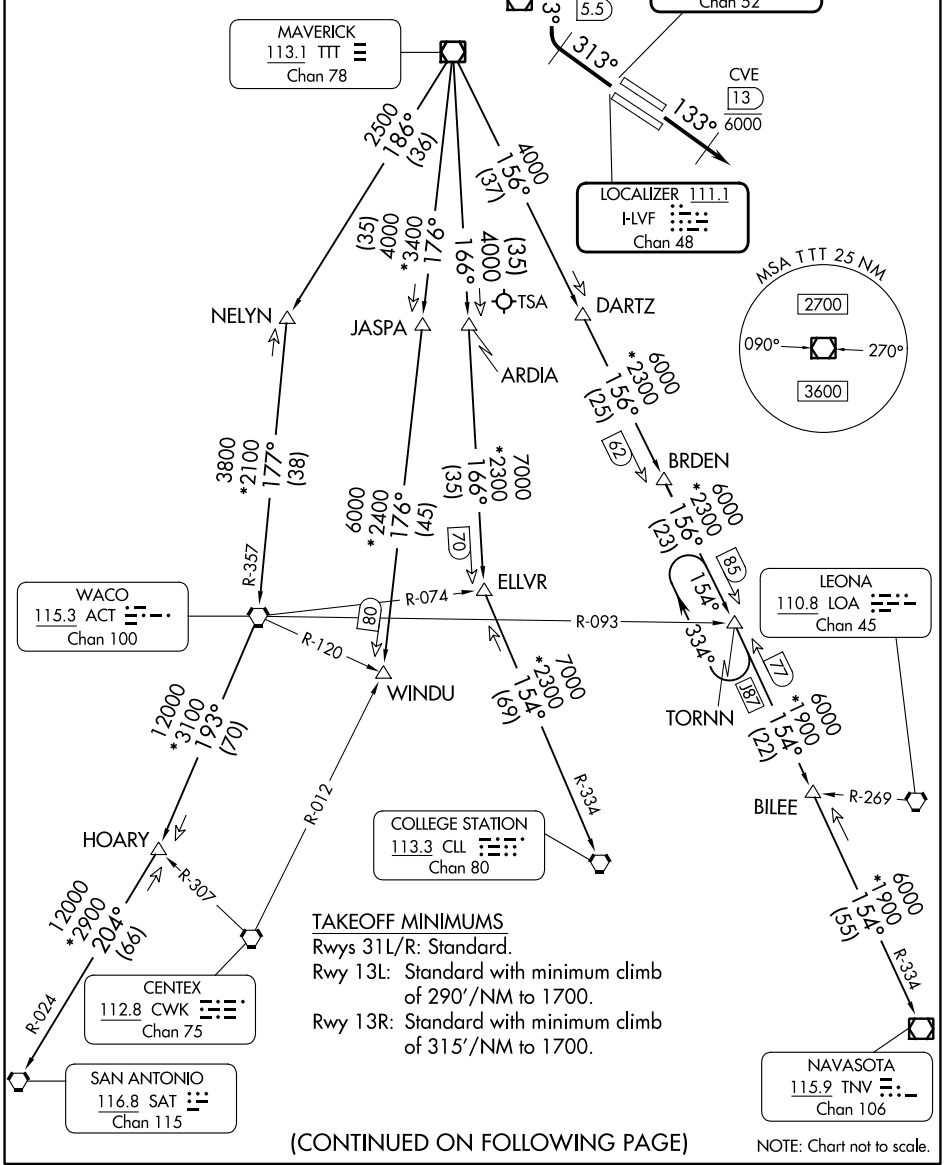
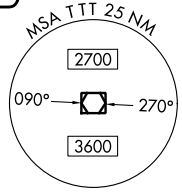
COWBOY  
116.2 CVE : : : :  
Chan 109

LOCALIZER 111.5  
I-OVW : : : : :  
Chan 52

MAVERICK  
113.1 TTT : : :  
Chan 78

LOCALIZER 111.1  
H-LVF : : : : :  
Chan 48

CVE  
13  
6000



**TAKEOFF MINIMUMS**  
Rwys 31L/R: Standard.  
Rwy 13L: Standard with minimum climb of 290'/NM to 1700.  
Rwy 13R: Standard with minimum climb of 315'/NM to 1700.

(CONTINUED ON FOLLOWING PAGE)

NOTE: Chart not to scale.

SC-2, 11 JUL 2024 to 08 AUG 2024

SC-2, 11 JUL 2024 to 08 AUG 2024

# JOE POOL SEVEN DEPARTURE