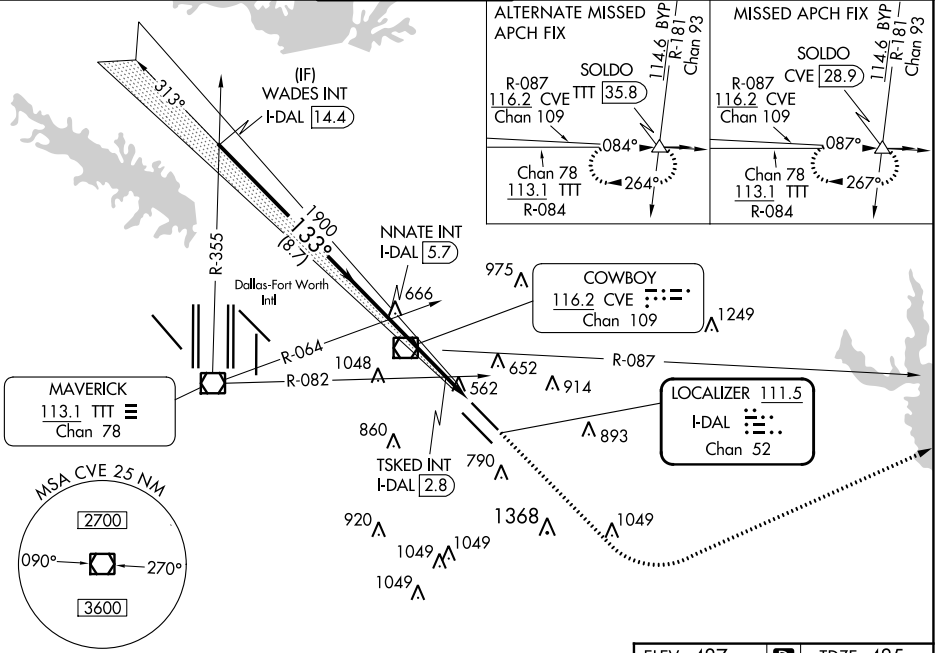


LOC/DME I-DAL	APP CRS	Rwy Idg	7352
111.5	133°	TDZE	485
Chan 52		Apt Elev	487

ILS Y or LOC Y RWY 13L

DALLAS LOVE FLD (DAL)

RADAR required for procedure entry.		MALSR	MISSED APPROACH: Climb to 1000 then climbing left turn to 3000 on heading 060° and CVE VOR/DME R-087 to SOLDLO INT/CVE 28.9 DME and hold.		
Simultaneous approach authorized.					
D-ATIS	REGIONAL APP CON	LOVE TOWER	GND CON	CLNC DEL	CPDLC
120.15	NORTH 124.3 282.275 SOUTH 125.2 343.65	123.7 239.3	121.75 348.6	127.9	

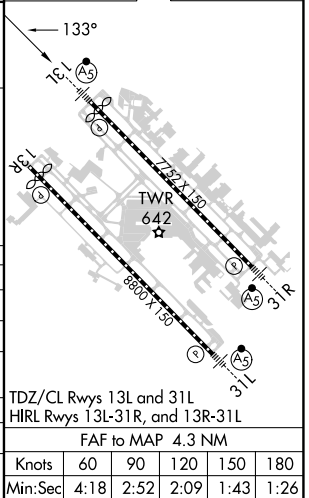


ELEV 487	D	TDZE 485
----------	---	----------

VGSI and RNAV glidepath not coincident (VGSI Angle 3.08/TCH 55).

WADES INT I-DAL 14.4	NNATE INT I-DAL 5.7	TSKED INT I-DAL 2.8	SOLDLO INT I-DAL 2.3	I-DAL 1.4
2500	1900	920	3000	1000
GS 3.00° TCH 55				
*LOC only.				
hdg 060°				
CUE R-087				

CATEGORY	A	B	C	D
S-ILS 13L	685/18 200 (200-1/2)			
S-LOC 13L	920/24	435 (500-1/2)	920/40	435 (500-3/4)
CIRCLING	1000-1 513 (600-1)	1140-1 653 (700-1)	1220-2 733 (800-2)	1520-3 1033 (1100-3)
TSKED FIX MINIMUMS (DUAL VOR RECEIVERS OR DME REQUIRED)				
S-LOC 13L	820/24	335 (400-1/2)	820/26	335 (400-5/8)
CIRCLING	1000-1 513 (600-1)	1140-1 653 (700-1)	1220-2 733 (800-2)	1520-3 1033 (1100-3)



SC-2, 03 OCT 2024 to 31 OCT 2024

SC-2, 03 OCT 2024 to 31 OCT 2024