

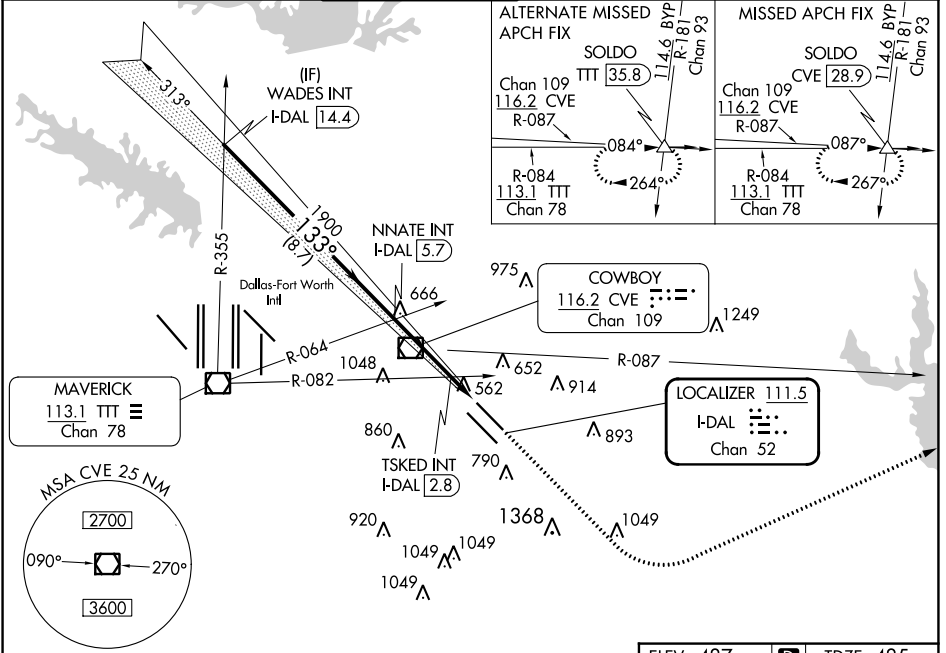
LOC/DME I-DAL	APP CRS	Rwy Idg	7352
111.5	133°	TDZE	485
Chan 52		Apt Elev	487

ILS or LOC RWY 13L

DALLAS LOVE FLD (DAL)

RADAR required for procedure entry.		MALSR	MISSED APPROACH: Climb to 1000 then climbing left turn to 3000 on heading 060° and CVE VOR/DME R-087 to SOLDO INT/CVE 28.9 DME and hold.
Simultaneous approach authorized.			

D-ATIS	LONE STAR APP CON	LOVE TOWER	GND CON	CLNC DEL	CPDLC
120.15	NORTH 124.3 282.275 SOUTH 125.2 343.65	123.7 239.3	121.75 348.6	127.9	



ELEV 487		D		TDZE 485	
WADES INT I-DAL 14.4		1000		3000	
NNATE INT I-DAL 5.7		hdg 060°		CVE R-087	
TSKED INT I-DAL 2.8		SOLDO		△	
GS 3.00° TCH 55		1900		920	
-8.7 NM		2.9 NM		0.5 - 0.9	
CATEGORY	A	B	C	D	
S-ILS 13L	685/18		200 (200-½)		
S-LOC 13L	920/24	435 (500-½)	920/40	435 (500-¾)	
CIRCLING	1000-1 513 (600-1)	1140-1 653 (700-1)	1220-2 733 (800-2)	1520-3 1033 (1100-3)	
TSKED FIX MINIMUMS (DUAL VOR RECEIVERS OR DME REQUIRED)					
S-LOC 13L	820/24	335 (400-½)	820/26	335 (400-½)	
CIRCLING	1000-1 513 (600-1)	1140-1 653 (700-1)	1220-2 733 (800-2)	1520-3 1033 (1100-3)	
TDZ/CL Rws 13L and 31L HIRL Rws 13L-31L, and 13R-31L					
FAF to MAP 4.3 NM					
Knots		60	90	120	150 180
Min:Sec		4:18	2:52	2:09	1:43 1:26

SC-2, 26 DEC 2024 to 23 JAN 2025

SC-2, 26 DEC 2024 to 23 JAN 2025