

GARLAND FIVE DEPARTURE

SC-2, 03 OCT 2024 to 31 OCT 2024

REGIONAL DEP CON
118.55 290.35
D-ATIS
120.15
CLNC DEL
127.9
CPDLC
GND CON
121.75 348.6
LOVE TOWER
123.7 239.3

**TOP ALTITUDE:
RWYS 13L/R:
8000
RWYS 31L/R:
ASSIGNED BY ATC**

NOTE: SOLDO Transition: ATC assigned.

RADAR and DME required.

TEXARKANA
116.3 TKX
Chan 110

PARIS
113.6 PRX
Chan 83

BONHAM
114.6 BYP
Chan 93

COWBOY
116.2 CVE
Chan 109

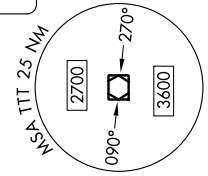
LOCALIZER 111.5
I-0VW
Chan 52

MAVERICK
113.1 TTT
Chan 78

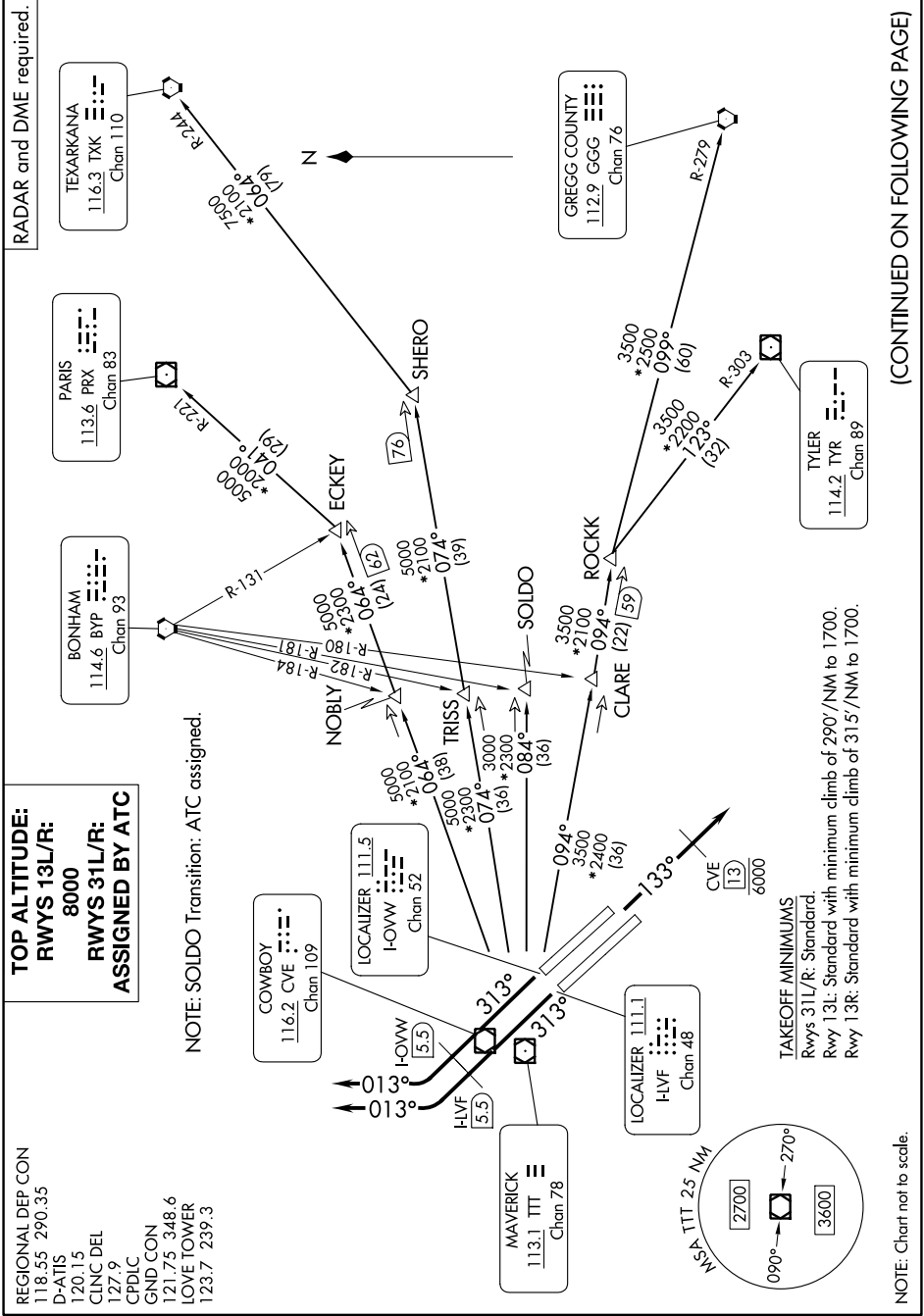
LOCALIZER 111.1
I-HVF
Chan 48

GREGG COUNTY
112.9 GGG
Chan 76

TYLER
114.2 TYR
Chan 89



NOTE: Chart not to scale.



(CONTINUED ON FOLLOWING PAGE)

SC-2, 03 OCT 2024 to 31 OCT 2024