

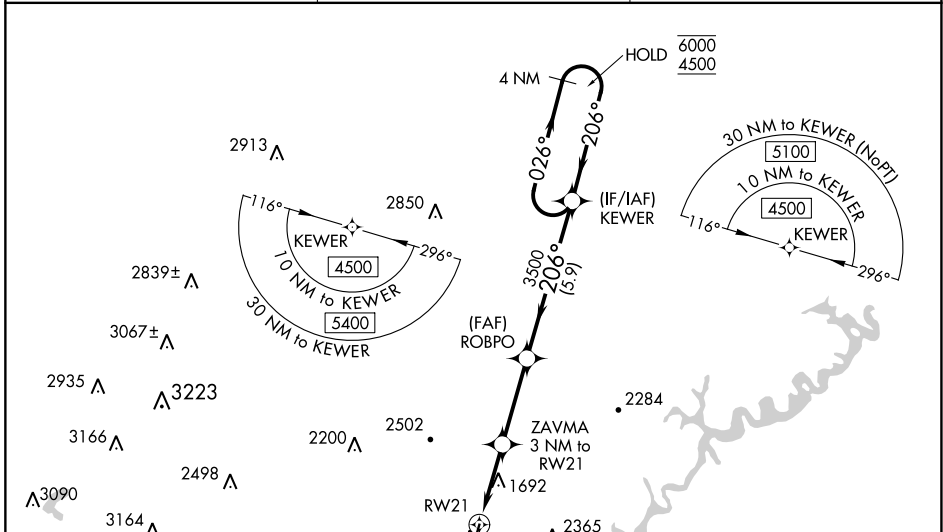
WAAS CH <b>90105</b> <b>W21A</b>	APP CRS <b>206°</b>	Rwy Idg TDZE Apt Elev	<b>5465</b> <b>1486</b> <b>1503</b>
--	------------------------	-----------------------------	---

# RNAV (GPS) RWY 21

ALTOONA/BLAIR COUNTY (A00)

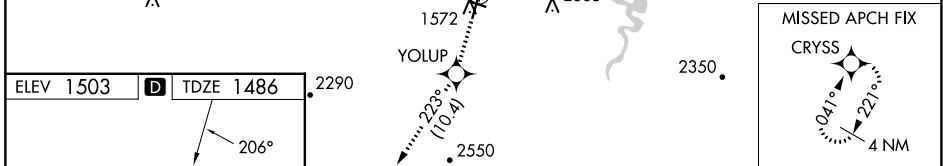
RNP APCH - GPS.	MALSR AS	MISSED APPROACH: Climb to 5000 direct YOLUP and on track 223° to CRYSS and hold, continue climb-in-hold to 5000.
-----------------	-------------	--

ASOS <b>127.125</b>	JOHNSTOWN APP CON ★ <b>121.2 299.2</b>	CTAF <b>123.60</b>
------------------------	---	-----------------------

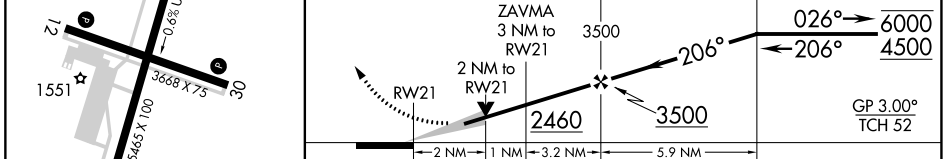


NE-4, 31 OCT 2024 to 28 NOV 2024

NE-4, 31 OCT 2024 to 28 NOV 2024



ELEV 1503	D	TDZE 1486
-----------	---	-----------



CATEGORY	A	B	C	D
LPV DA		1977-1	491 (500-1)	
INAV/VNAV DA		1999-1	513 (500-1)	
INAV MDA	2160-1/2	674 (700-1/2)	2160-1/2	674 (700-1/2)
CIRCLING	2240-1	737 (800-1)	2800-3 1297 (1300-3)	2840-3 1337 (1400-3)