

LOC I-AOO 111.1	APP CRS 206°	Rwy ldg TDZE Apt Elev	5465 1486 1503
---------------------------	------------------------	-----------------------------	---

ILS or LOC RWY 21

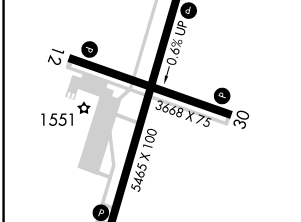
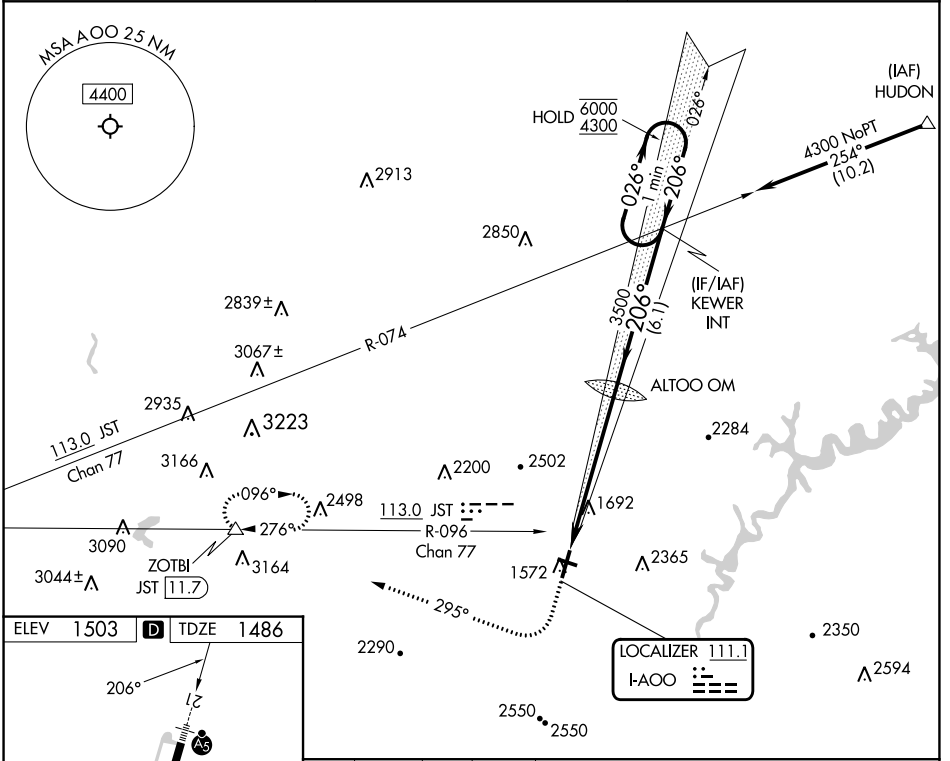
ALTOONA/BLAIR COUNTY (AOO)

DME required.

MAJRS

MISSED APPROACH: Climb to 2100 then climbing right turn to 5000 on heading 295° and on JST R-096 to ZOTBI/JST 11.7 DME and hold, continue climb-in-hold to 5000.

ASOS 127.125	JOHNSTOWN APP CON * 121.2 299.2	CTAF 123.60
------------------------	---	-----------------------



ELEV 1503 **D** TDZE 1486

LOCALIZER 111.1
I-AOO

2100 5000 JST R-096 ZOTBI KEWER INT One Minute Holding Pattern

hdg 295°

ALTOO OM 3444 206° 6000 4300 3500 GS 3.00° TCH 52

6 NM 6.1 NM

FAF to MAP 6 NM	Knots	60	90	120	150	180
Min:Sec	6:00	4:00	3:00	2:24	2:00	
CIRCLING	2240-1 737 (800-1)	2240-1 1/4 737 (800-1 1/4)	2240-3/4 754 (800-3/4)	2240-1 3/4 754 (800-1 3/4)	2800-3 1297 (1300-3)	2840-3 1337 (1400-3)

NE-4, 31 OCT 2024 to 28 NOV 2024

NE-4, 31 OCT 2024 to 28 NOV 2024