

# HI-TACAN X RWY 13R

TACAN NGP Chan <b>87</b>	APCH CRS <b>147°</b>	Rwy Idg TDZE Arprt Elev	<b>8001</b> <b>13</b> <b>18</b>
-----------------------------	-------------------------	-------------------------------	---------------------------------------

[USN]

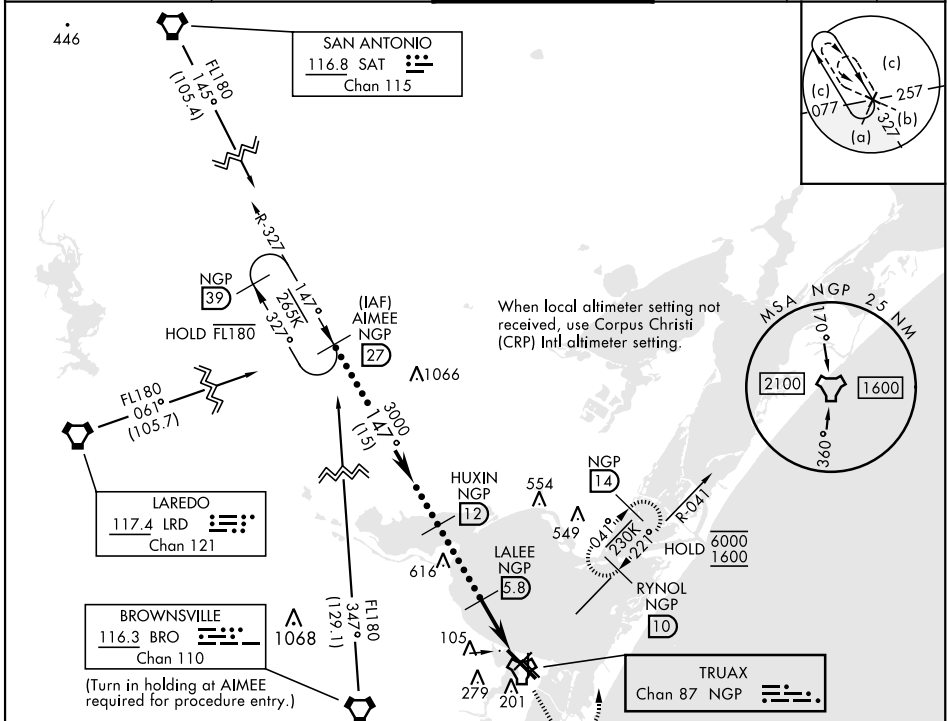
CORPUS CHRISTI NAS (TRUAX FLD) (KNGP)

**V** \* When ALS inop, increase vis to 1½ miles.

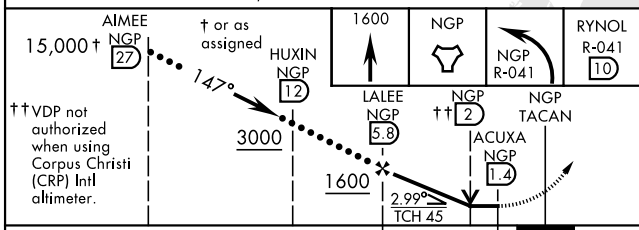
**SALSF** **A2**

**MISSED APPROACH:** Climb to 1600 direct NGP TACAN and turn left to intercept R-041 to RYNOL and hold.

ATIS ★ <b>127.9 290.9</b>	APP CON <b>120.9 348.725</b>	NAVY CORPUS TOWER ★ <b>134.85 0 340.2</b>	GND CON <b>118.7 257.85</b>	CLNC DEL <b>314.3</b>	ASR/ PAR
------------------------------	---------------------------------	--	--------------------------------	--------------------------	-------------



EMERG SAFE ALT 100 NM 11,100



CATEGORY	C	D	E
S-13R*	400-7/8	387	(400-7/8)
<b>C</b> CIRCLING	520-1½ 502 (600-1½)	580-2	562 (600-2)
CORPUS CHRISTI (CRP) INTL ALTIMETER SETTING			
S-13R*	420-1	407	(500-1)
<b>C</b> CIRCLING	540-1½ 522 (600-1½)	620-2 602 (700-2)	620-2¼ 602 (700-2¼)

ELEV 18 | TDZE 13

This block contains a detailed field diagram of Corpus Christi NAS (Truax Field). It shows the layout of runways (13L, 13R, 18, 36), taxiways (A, B, C, D, E, F, G, H, I, J, K, L, M, N, O, P, Q, R, S, T, U, V, W, X, Y, Z), and various navigation aids including TWR, R-041, and various NGP frequencies. A distance of 4.4 NM is also indicated.

# HI-TACAN X RWY 13R

SC-3, 31 OCT 2024 to 28 NOV 2024

SC-3, 31 OCT 2024 to 28 NOV 2024