

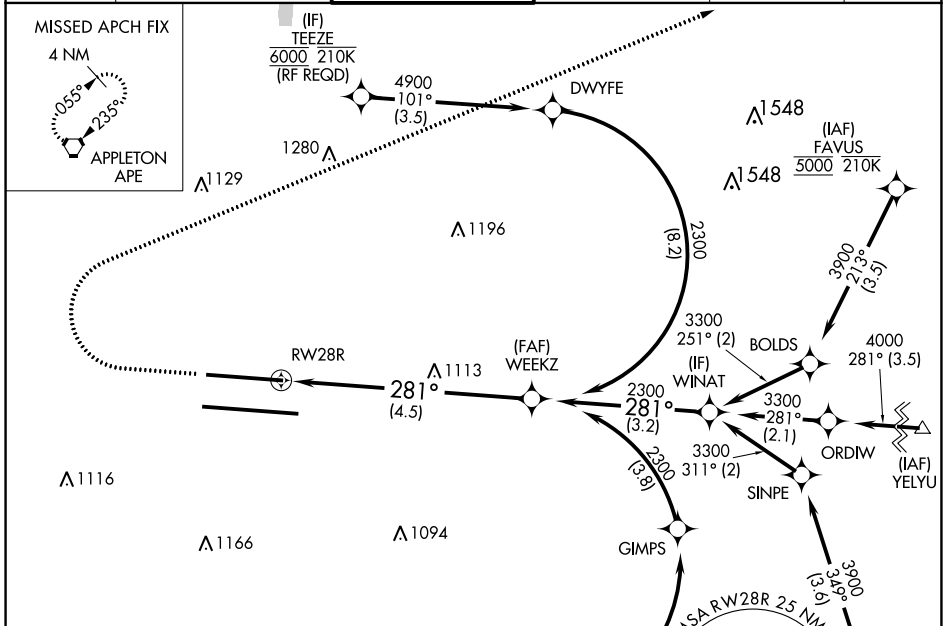
APP CRS	Rwy Idg	<b>8000</b>
<b>281°</b>	TDZE	<b>813</b>
	Apt Elev	<b>815</b>

# RNAV (RNP) Z RWY 28R

JOHN GLENN COLUMBUS INTL (CMH)

RNP AR APCH.	MALSR	MISSED APPROACH: Climb to 1400 then climbing right turn to 3000 to APE VORTAC and hold.
<p>For uncompensated Baro-VNAV systems, procedure NA below -19°C or above 54°C. For inop ALS, increase RNP 0.16 all Cats visibility to RVR 4500 and increase RNP 0.30 all Cats visibility to RVR 5500. Simultaneous approach authorized.</p>		

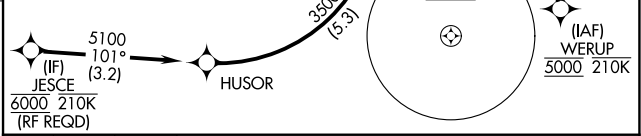
D-ATIS	COLUMBUS APP CON	COLUMBUS TOWER	GND CON	CLNC DEL	CPDLC
<b>124.6</b>	<b>125.95 371.975</b>	<b>132.7 257.8</b>	<b>121.9 348.6</b>	<b>126.3</b>	



EC-2, 08 AUG 2024 to 05 SEP 2024

EC-2, 08 AUG 2024 to 05 SEP 2024

ELEV	<b>815</b>	<b>D</b>	TDZE	<b>813</b>
------	------------	----------	------	------------



<p>5100 (IF) 101° (3.2) JESCE 6000 210K (RF REQD)</p>	<p>1400 3000 APE</p>	<p>See planview for multiple IF locations.</p>
---	----------------------	--

<p>WEEKZ 2300</p>	<p>RWY 28R 281° 2300</p>	<p>GP 3.00° TCH 50</p>
<p>4.5 NM</p>		

CATEGORY	A	B	C	D
RNP 0.16 DA		1129/24	316 (400-½)	
RNP 0.30 DA		1185/35	372 (400-¾)	

## AUTHORIZATION REQUIRED