

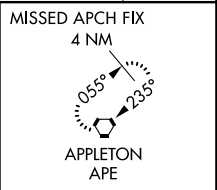
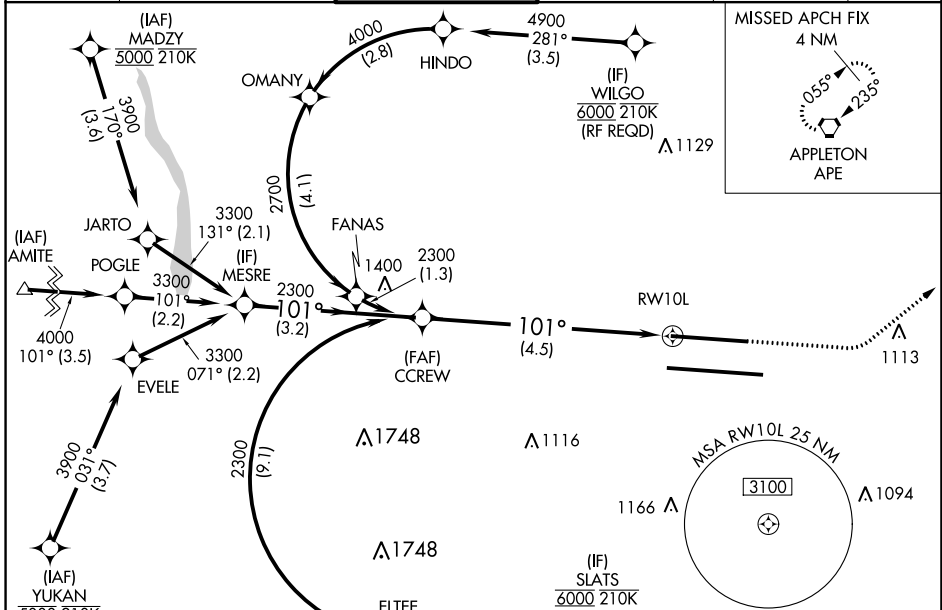
APP CRS	Rwy Idg	8000
101°	TDZE	815
	Apt Elev	815

RNAV (RNP) Z RWY 10L

JOHN GLENN COLUMBUS INTL (CMH)

RNP AR APCH.	MALSR 	MISSED APPROACH: Climb to 1400 then climbing left turn to 3000 direct APE VORTAC and hold.
<p>Simultaneous approach authorized. For uncompensated Baro-VNAV systems, procedure NA below -19°C or above 54°C. For inop ALS, increase RNP 0.30 all Cats visibility to RVR 6000.</p>		

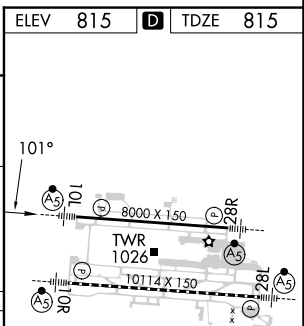
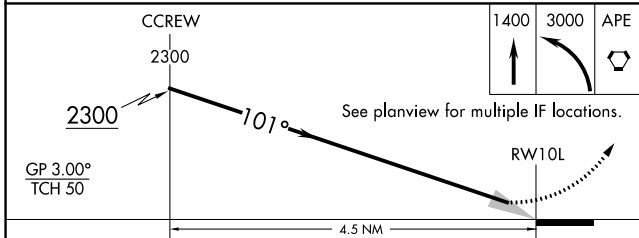
D-ATIS 124.6	COLUMBUS APP CON 125.95 371.975	COLUMBUS TOWER 132.7 257.8	GND CON 121.9 348.6	CLNC DEL 126.3	CPDLC
------------------------	---	--------------------------------------	-------------------------------	--------------------------	-------



EC-2, 31 OCT 2024 to 28 NOV 2024

EC-2, 31 OCT 2024 to 28 NOV 2024

ELEV	815	TDZE	815
------	------------	------	------------



CATEGORY	A	B	C	D
RNP 0.13 DA		1148/26	333 (400- $\frac{5}{6}$)	
RNP 0.26 DA		1198/35	383 (400- $\frac{3}{4}$)	
RNP 0.30 DA		1216/40	401 (500- $\frac{3}{4}$)	

AUTHORIZATION REQUIRED

TDZ/CL Rwy 10R-28L
HIRL Rwy 10R-28L and 10L-28R