

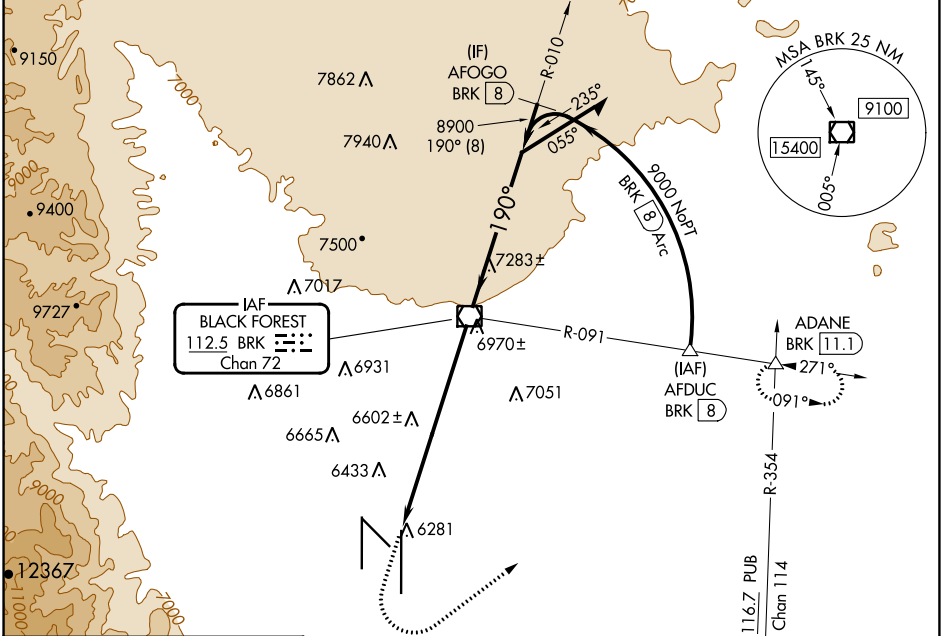
VOR/DME BRK 112.5 Chan 72	APP CRS 190°	Rwy Idg 13500 TDZE 6187 Apt Elev 6187
---	------------------------	--

VOR RWY 17L

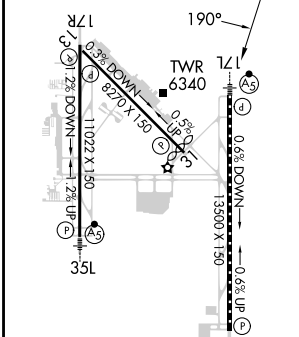
CITY OF COLORADO SPRINGS MUNI (COS)

DME and RADAR required for procedure entry at AFDUC.		MALSR 	MISSED APPROACH: Climb to 7900 then climbing left turn to 9000 on heading 045° and BRK VOR/DME R-091 to ADANE INT/BRK VOR/DME 11.1 DME and hold.
Inop table does not apply.			

ATIS 125.0 254.3	SPRINGS APP CON 124.0 257.875	SPRINGS TOWER 119.9 360.6	GND CON 121.7 348.6	CLNC DEL 134.45 363.125
----------------------------	---	-------------------------------------	-------------------------------	-----------------------------------



ELEV 6187	D	TDZE 6187
-----------	----------	-----------

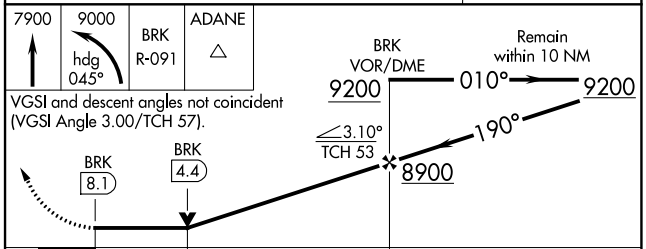


MIRL Rwy 13-31
HIRL Rwys 17R-35L and 17L-35R
REIL Rwys 13, 17R, 31 and 35R
TDZ/CL Rwys 17L and 35R

FAF to MAP 8.1 NM

Knots	60	90	120	150	180
Min:Sec	8:06	5:24	4:03	3:14	2:42

CIRCLING



CATEGORY	A	B	C	D
S-17L	7440-1¼ 1253 (1300-1¼)	7440-1½ 1253 (1300-1½)	7440-3	1253 (1300-3)
<input checked="" type="checkbox"/> CIRCLING	7440-1¼ 1253 (1300-1¼)	7440-1½ 1253 (1300-1½)	7440-3	1253 (1300-3)

SW-1, 31 OCT 2024 to 28 NOV 2024

SW-1, 31 OCT 2024 to 28 NOV 2024