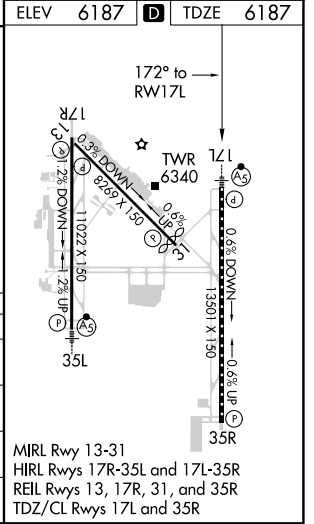
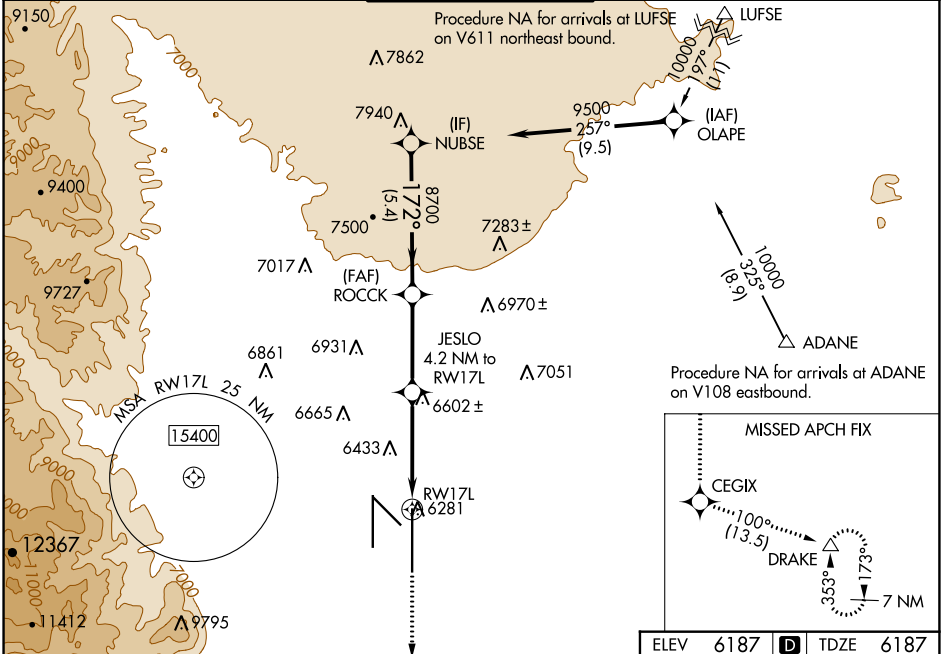


WAAS CH 69618 W17A	APP CRS 172°	Rwy Idg TDZE 6187 Apt Elev 6187	13501
--	------------------------	---	--------------

RNAV (GPS) Y RWY 17L

CITY OF COLORADO SPRINGS MUNI (COS)

<p>▼ For uncompensated Baro-VNAV systems, LNAV/VNAV NA below -21°C (-5°F) or above 44°C (112°F). DME/DME RNP-0.3 NA. For inop MALSRL, increase LNAV Cat C/D visibility to 1/2 SM.</p>		<p>MALSRL</p>	<p>MISSED APPROACH: Climb to 9000 direct CEGIX and on track 100° to DRAKE and hold.</p>	
<p>ATIS 125.0 254.3</p>	<p>SPRINGS APP CON 124.0 257.875</p>	<p>SPRINGS TOWER 119.9 360.6</p>	<p>GND CON 121.7 348.6</p>	<p>CLNC DEL 134.45 363.125</p>



<p>9000</p> <p>CEGIX</p> <p>tr 100°</p> <p>DRAKE</p> <p>VGSI and RNAV glidepath not coincident (VGSI Angle 3.00/TCH 53).</p>	<p>ROCK</p> <p>NUBSE</p> <p>JESLO 4.2 NM to RWY 17L</p> <p>8700</p> <p>8700</p> <p>9500</p> <p>172°</p> <p>7580*</p> <p>8700</p> <p>GP 3.00°</p> <p>TCH 57</p>			
LNAV only	<p>RWY 17L</p> <p> 2.4 NM to RWY 17L</p> <p>1.8 NM</p> <p>3.5 NM</p> <p>5.4 NM</p>			
CATEGORY	A	B	C	D
LPV DA	6387/18		200 (200-1/2)	
LNAV/VNAV DA	6602/45		415 (500-3/4)	
LNAV MDA	7000/24 813 (900-1/2)	7000/40 813 (900-3/4)	7000-17/8	813 (900-17/8)
C CIRCLING	7000-11/4	813 (900-11/4)	7040-2 1/2 853 (900-2 1/2)	7260-3 1073 (1100-3)

SW-1, 09 SEP 2021 to 07 OCT 2021

SW-1, 09 SEP 2021 to 07 OCT 2021