

# RNAV (RNP) Z RWY 17R

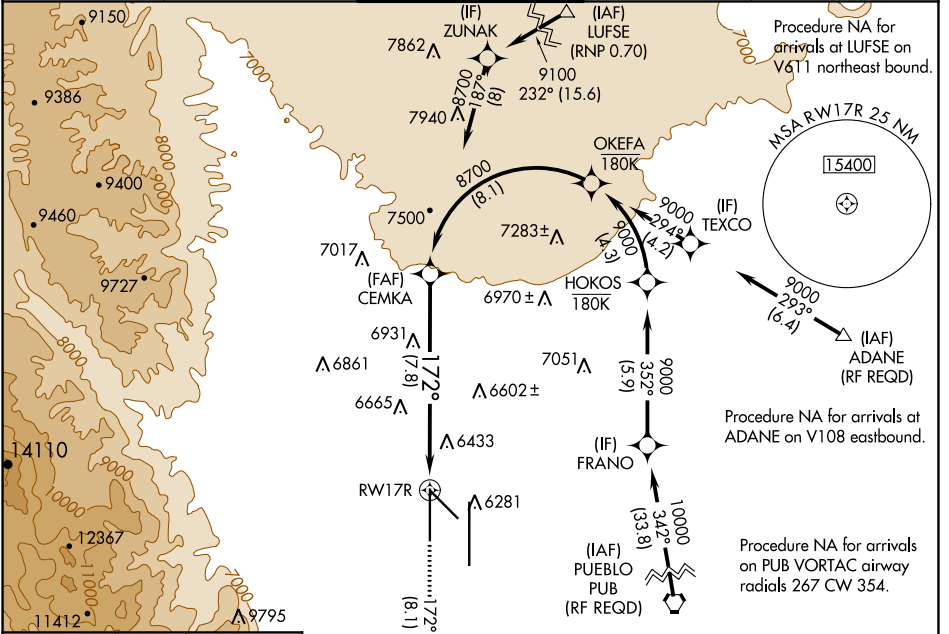
CITY OF COLORADO SPRINGS MUNI (COS)

APP CRS <b>172°</b>	Rwy Idg TDZE Apt Elev	<b>11022</b> <b>6177</b> <b>6187</b>
------------------------	-----------------------------	--

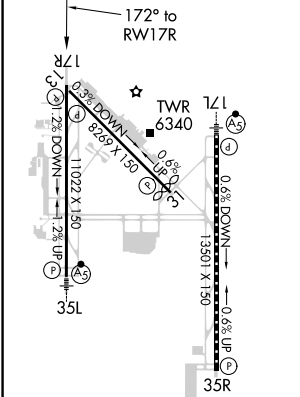
**⚠** For uncompensated Baro-VNAV systems, procedure NA below -21°C (-5°F) or above 45°C (113°F). GPS required. Simultaneous approach authorized.

**MISSED APPROACH:** Climb to 9000 on track 172° to KUSAC and on track 125° to JEMKI and on track 084° to DRAKE and hold.

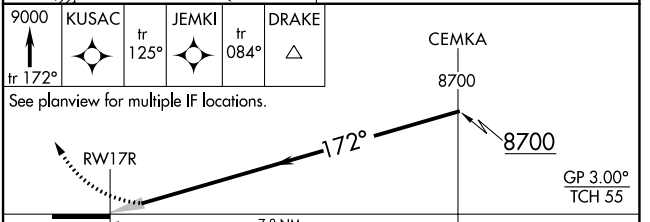
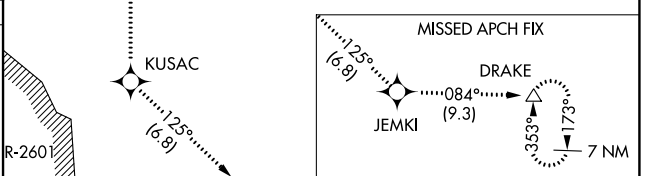
ATIS <b>125.0 254.3</b>	SPRINGS APP CON <b>124.0 257.875</b>	SPRINGS TOWER <b>119.9 360.6</b>	GND CON <b>121.7 348.6</b>	CLNC DEL <b>134.45 363.125</b>
----------------------------	---	-------------------------------------	-------------------------------	-----------------------------------



ELEV 6187	<b>D</b>	TDZE 6177
-----------	----------	-----------



MIRL Rwy 13-31  
HIRL Rws 17R-35L and 17L-35R  
REIL Rws 13, 17R, 31 and 35R  
TDZ/CL Rws 17L and 35R



CATEGORY	A	B	C	D
RNP 0.22 DA		6659-1 $\frac{1}{8}$	482 (500-1 $\frac{1}{8}$ )	
RNP 0.30 DA		6902-2 $\frac{1}{2}$	725 (800-2 $\frac{1}{2}$ )	

## AUTHORIZATION REQUIRED

SW-1, 09 SEP 2021 to 07 OCT 2021

SW-1, 09 SEP 2021 to 07 OCT 2021