

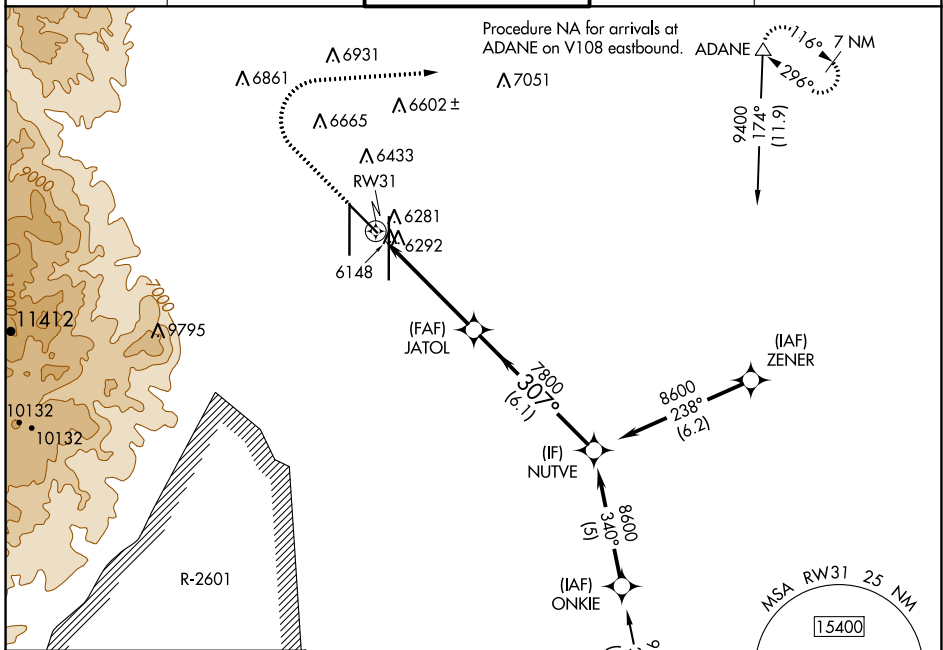
WAAS CH 40040 W31A	APP CRS 307°	Rwy Idg TDZE Apt Elev	7914 6156 6187
--	------------------------	-----------------------------	---

RNAV (GPS) RWY 31

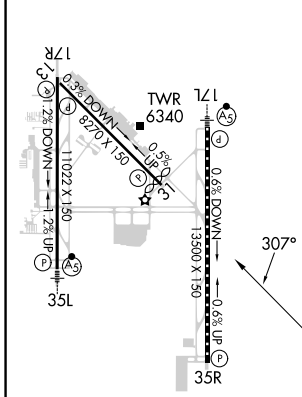
CITY OF COLORADO SPRINGS MUNI (COS)

DME/DME RNP-0.3 NA.		MISSED APPROACH: Climb to 6700 then climbing right turn to 9000 direct ADANE and hold.		
---------------------	--	--	--	--

ATIS 125.0 254.3	SPRINGS APP CON 124.0 257.875	SPRINGS TOWER 119.9 360.6	GND CON 121.7 348.6	CLNC DEL 134.45 363.125
----------------------------	---	-------------------------------------	-------------------------------	-----------------------------------

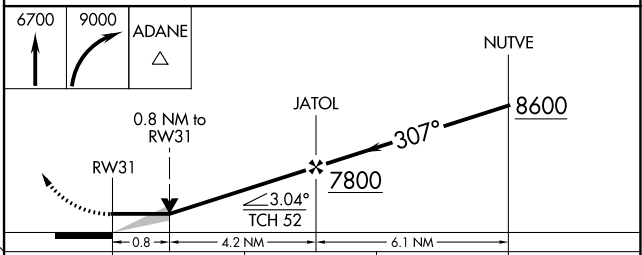


ELEV 6187	D	TDZE 6156
-----------	----------	-----------



MIRL Rwy 13-31
HIRL Rwys 17R-35L and 17L-35R
REIL Rwys 13, 17R, 31 and 35R
TDZ/CL Rwys 17L and 35R

Procedure NA for arrivals on PUB VORTAC
airway radials 267 CW 354.



CATEGORY	A	B	C	D
LP MDA	6440-1	284 (300-1)	6440-7/8	284 (300-7/8)
LNAV MDA	6560-1	404 (400-1)	6560-1 1/8	404 (400-1 1/8)
C CIRCLING	6740-1 553 (600-1)	6800-1 613 (700-1)	7040-2 1/2 853 (900-2 1/2)	7260-3 1073 (1100-3)

SW-1, 03 OCT 2024 to 31 OCT 2024

SW-1, 03 OCT 2024 to 31 OCT 2024